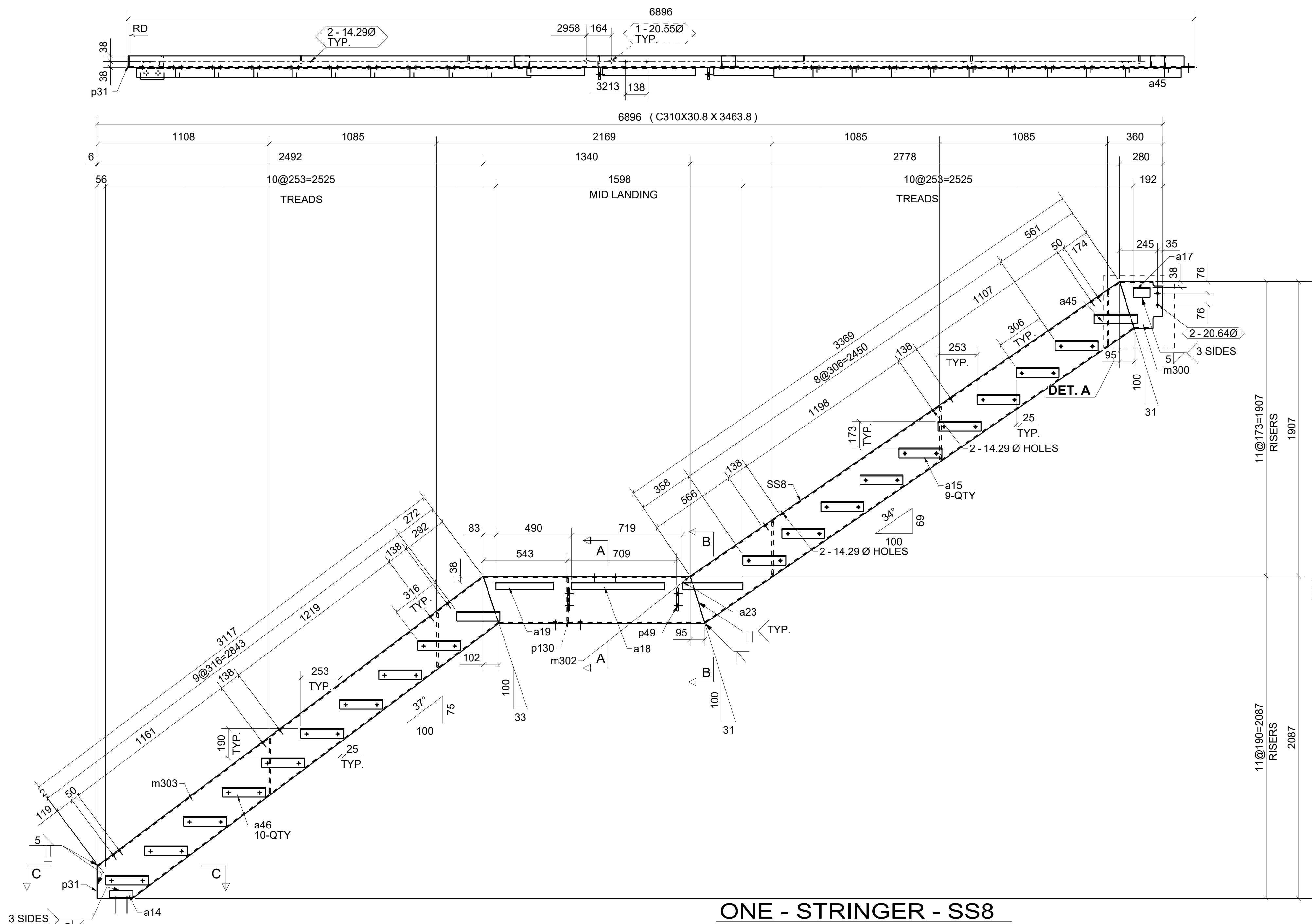


BILL OF MATERIAL						
MARK	QTY	DESCRIPTION	LENGTH	WEIGHT	REMARKS	
SS7	1	STRINGER				
SS7	1	C310X30.8	3464	107	GALV.	300W
a1	2	L64X64X6.4	278	3		300W
a14	1	L76X51X6.4	152	1	GALV.	300W
a17	1	L64X64X6.4	109	1		300W
a18	1	L51X51X4.8	600	2		300W
a19	1	L51X51X4.8	373	1		300W
a23	1	L51X51X4.8	390	1		300W
a46	18	L64X64X6.4	278	30		300W
m139	1	C310X30.8	3246	100	GALV.	300W
m299	1	C310X30.8	280	9	GALV.	300W
m301	1	C310X30.8	1435	44	GALV.	300W
p31	1	FL6X76	215	1	GALV.	300W
p49	2	PL10X80	149	2		300W
p54	2	PL10X68	358	4		300W
p56	3	PL10X68	348	5		300W
p130	2	PL10X68	293	3		300W
18		M13Ø A325N BOLT	31.8	0	Workshop	
TOTAL WEIGHT THIS DRAWING				314		

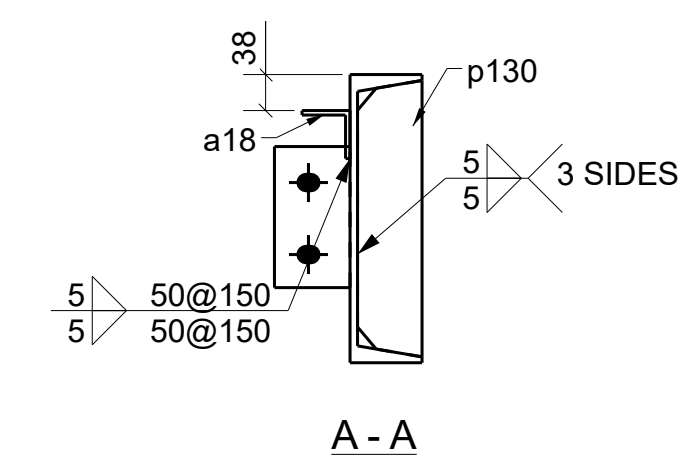
REV	DESCRIPTION	DATE

DESCRIPTION	STAIR	
PROJECT NAME		
DRAWN BY	DATE:	JOB No.
CHECKED BY	DATE:	DRG No. SS7

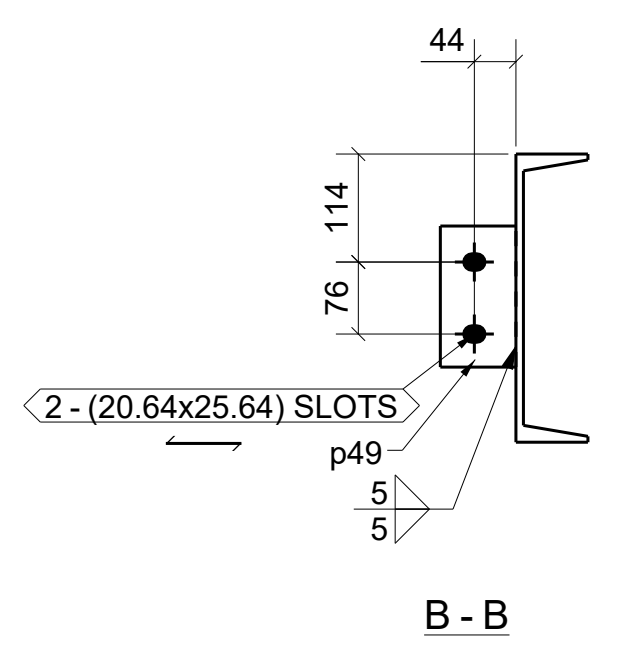
HOLES: 20.64 DIA. U/N
FINISH/PAINT: SSPC-SP2/1 COAT STD.SHOP PRIMER
ELECTRODE: E70XX



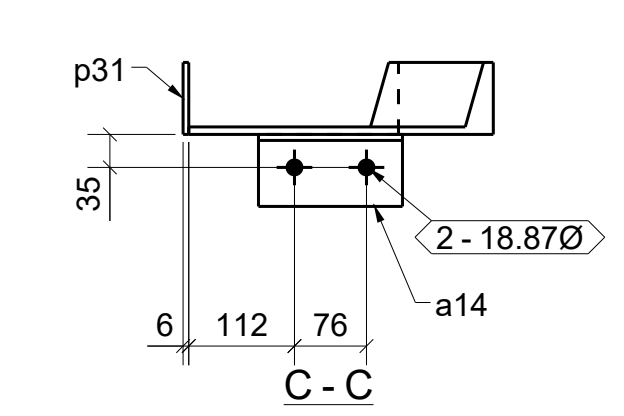
ONE - STRINGER - SS8



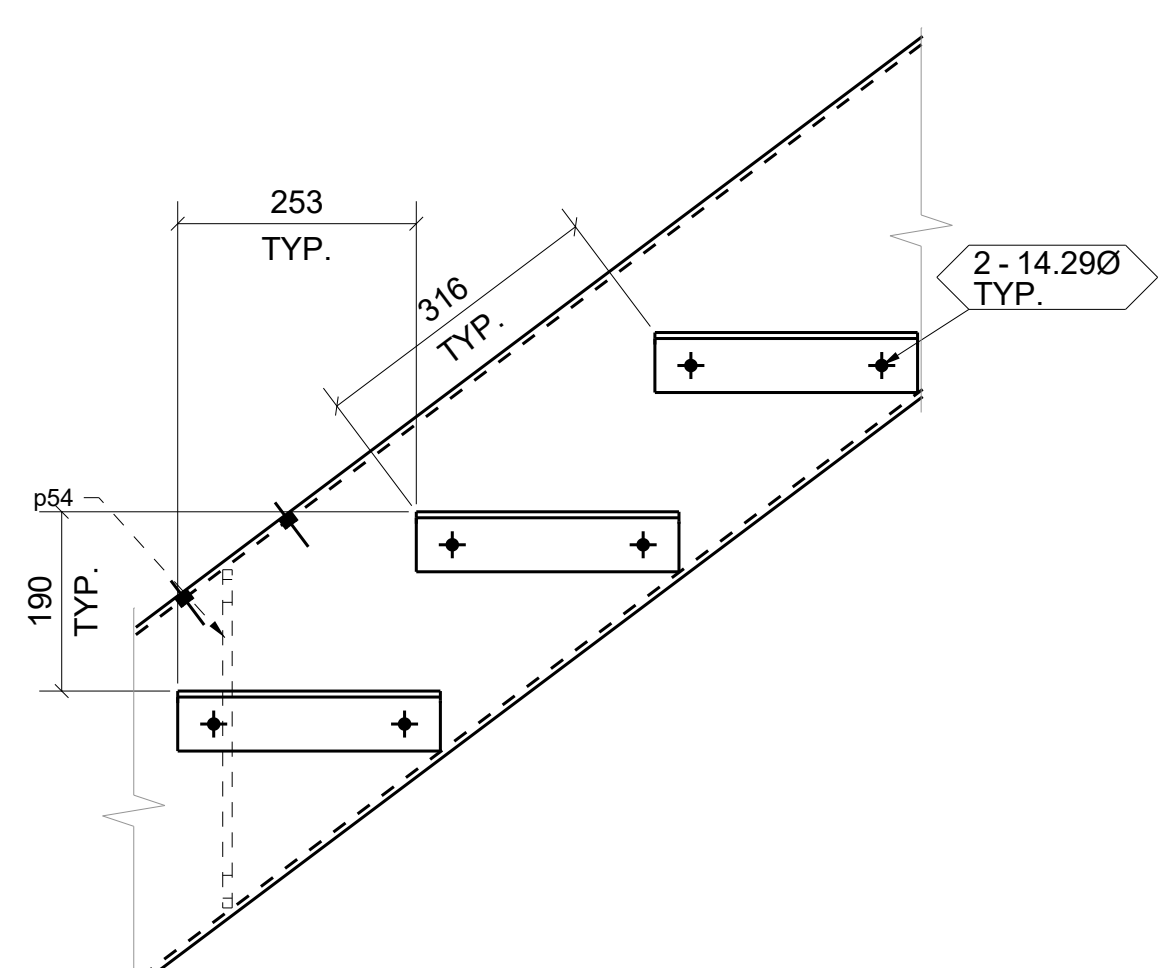
A - A



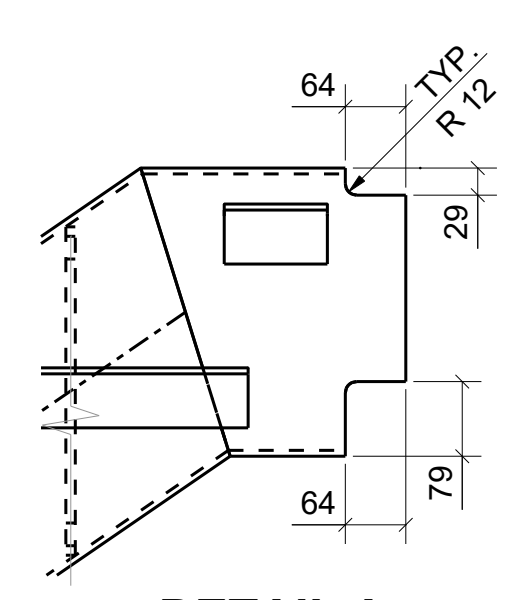
B - B



C - C



TYP PAN DETAIL



DETAIL A

BILL OF MATERIAL

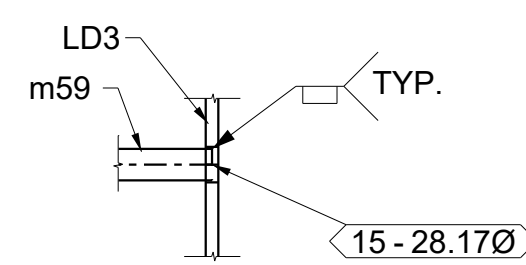
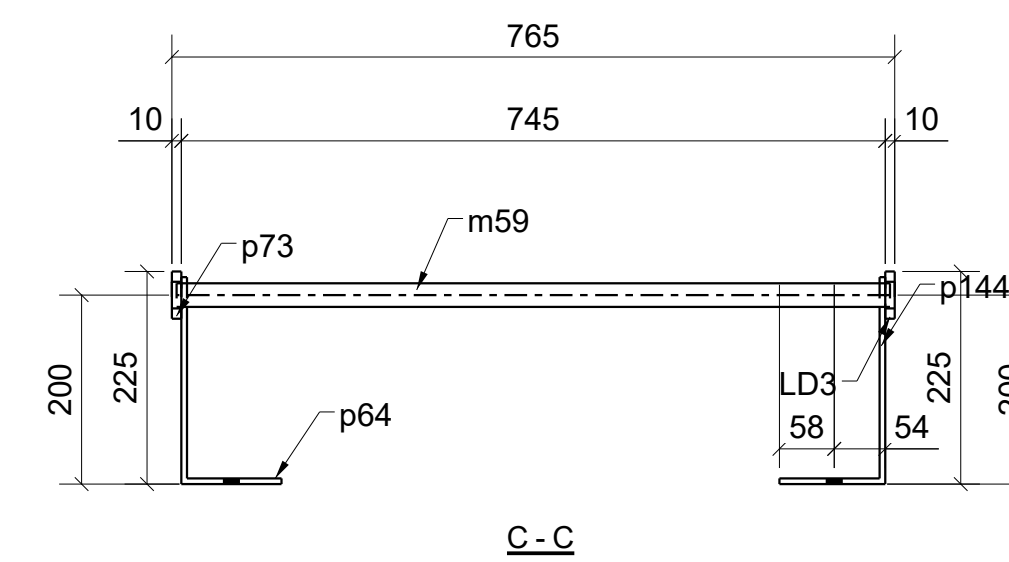
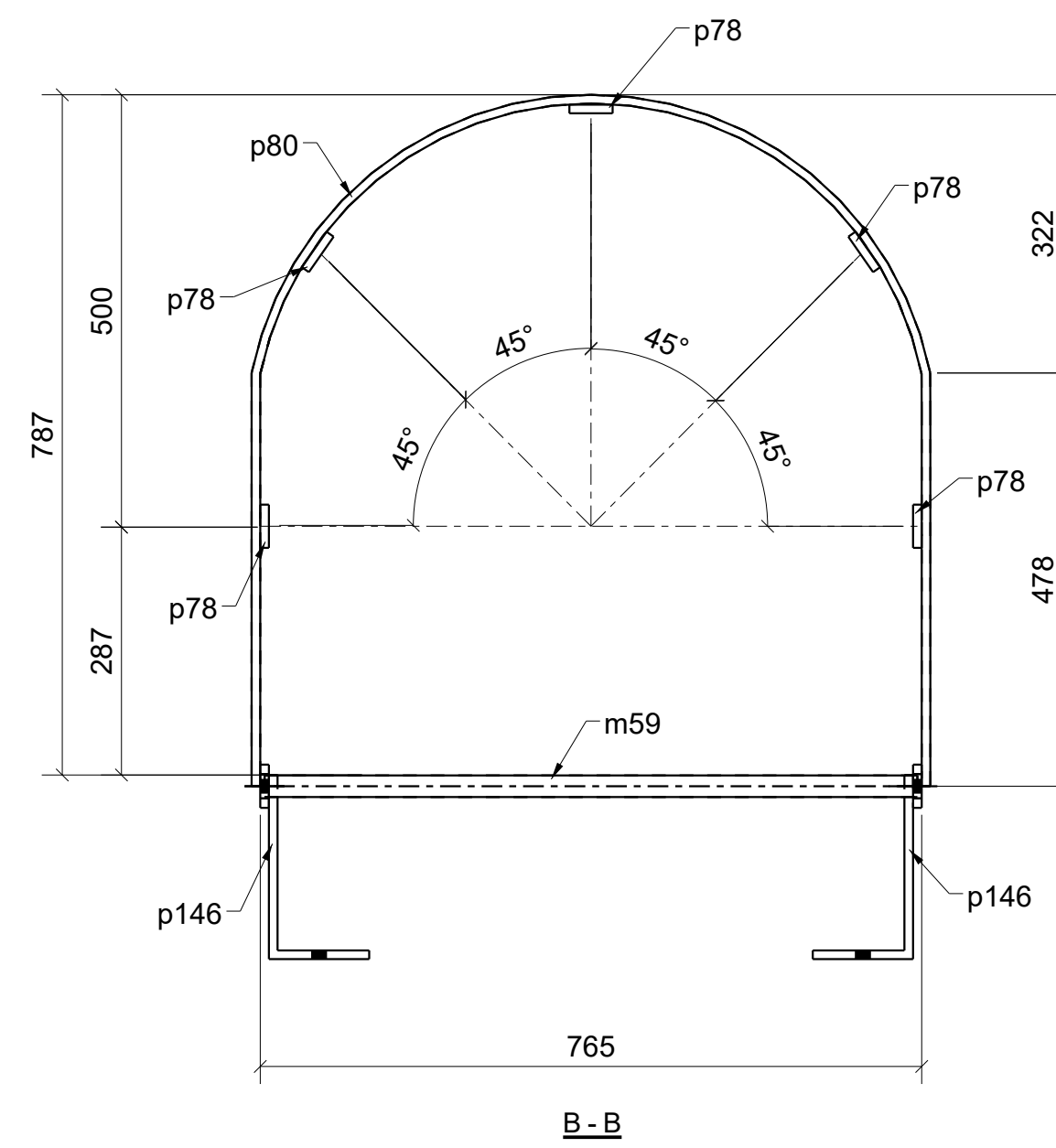
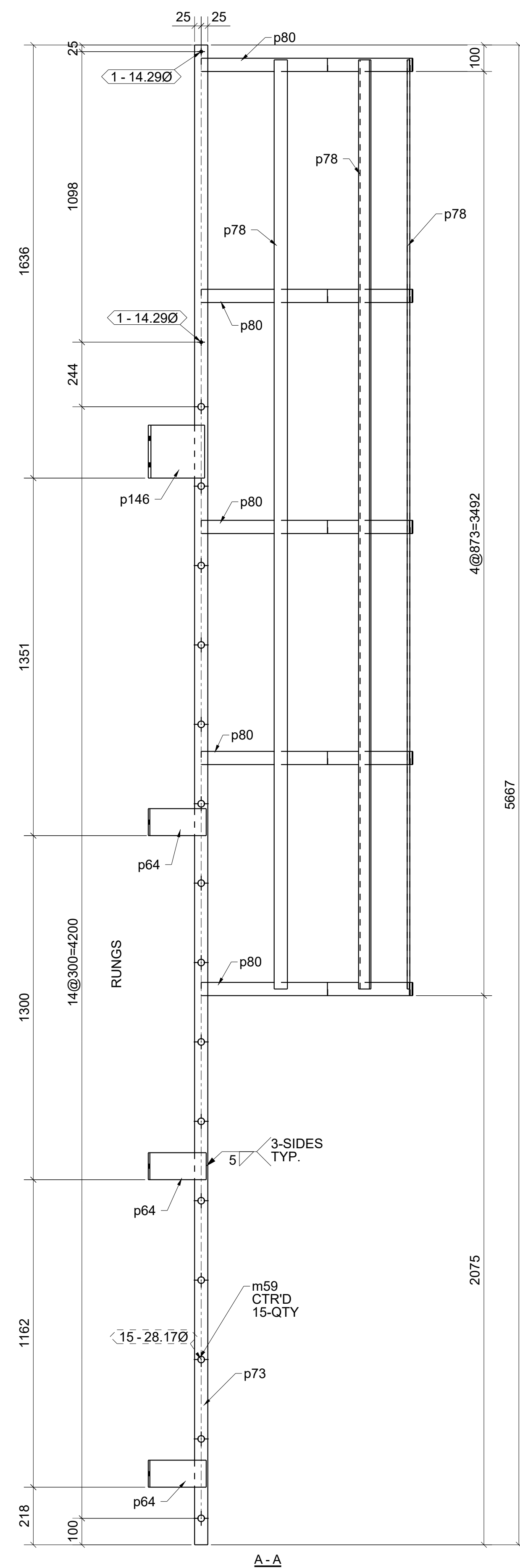
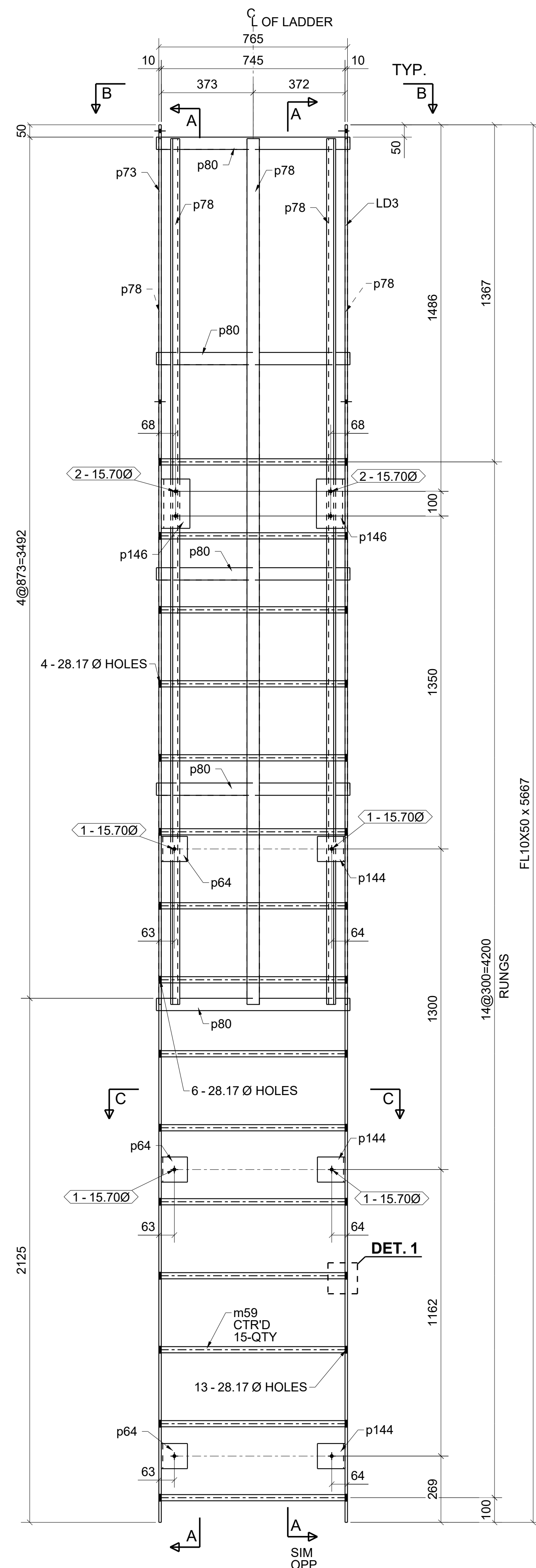
MARK	QTY	DESCRIPTION	LENGTH	WEIGHT	REMARKS
SS8	1	STRINGER			
SS8	1	C310X30.8	3464	107	GALV. 300W
a1	1	L64X64X6.4	278	2	300W
a14	1	L76X51X6.4	152	1	GALV. 300W
a15	9	L64X64X6.4	278	15	300W
a17	1	L64X64X6.4	109	1	300W
a18	1	L51X51X4.8	600	2	300W
a19	1	L51X51X4.8	373	1	300W
a23	1	L51X51X4.8	390	1	300W
a45	1	L64X64X6.4	278	2	300W
a46	9	L64X64X6.4	278	15	300W
m300	1	C310X30.8	280	9	GALV. 300W
m302	1	C310X30.8	1435	44	GALV. 300W
m303	1	C310X30.8	3246	100	GALV. 300W
p31	1	FL6X76	215	1	GALV. 300W
p49	2	PL10X80	149	2	300W
p54	2	PL10X68	358	4	300W
p56	3	PL10X68	348	5	300W
p130	1	PL10X68	293	1	300W
18		M13Ø A325N BOLT	31.8	0	Workshop
TOTAL WEIGHT THIS DRAWING				312	

REV	DESCRIPTION	DATE

DESCRIPTION: STAIR
 PROJECT NAME: _____
 DRAWN BY: _____ DATE: _____
 CHECKED BY: _____ DATE: _____

HOLES: 20.64 DIA. U/N
 FINISH/PAINT: SS-PC-SP2/1 COAT STD. SHOP PRIMER
 ELECTRODE: E70XX

JOB No. _____ DRG No. SS8



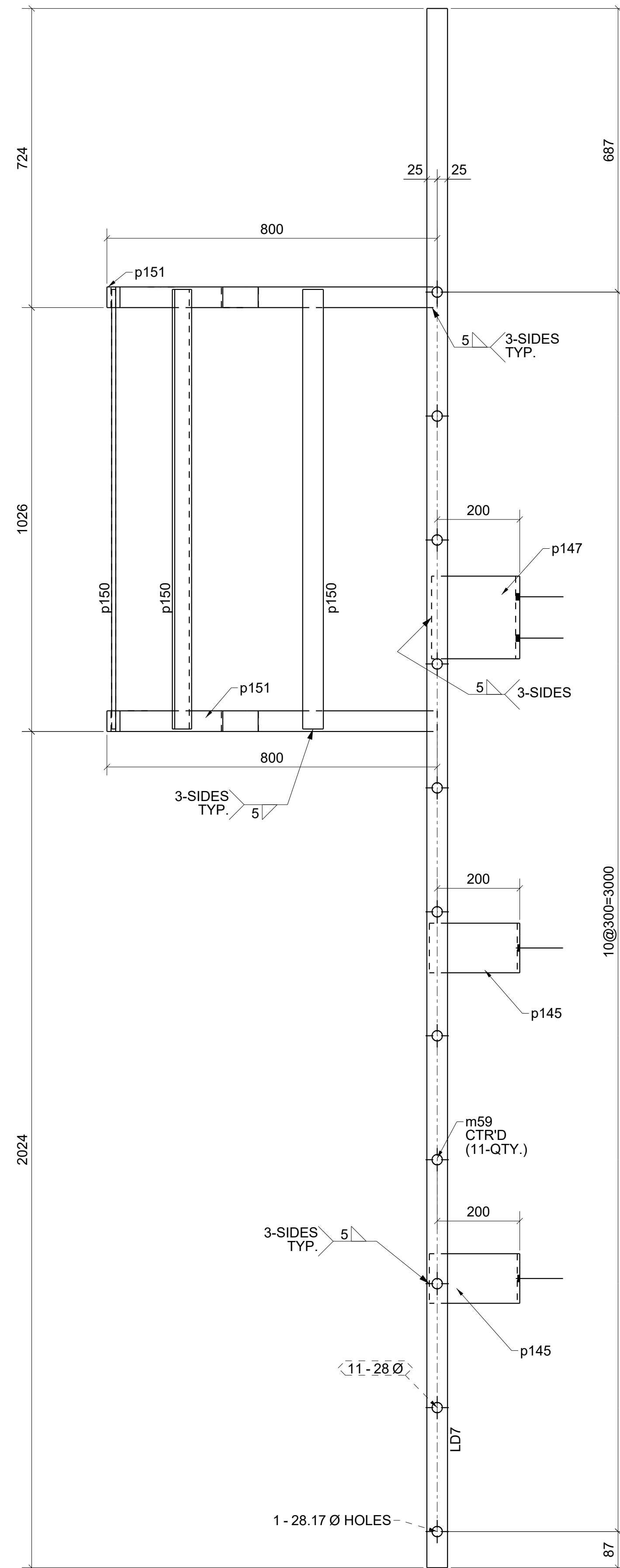
DETAIL 1

ONE - CAGED LADDER - LD3

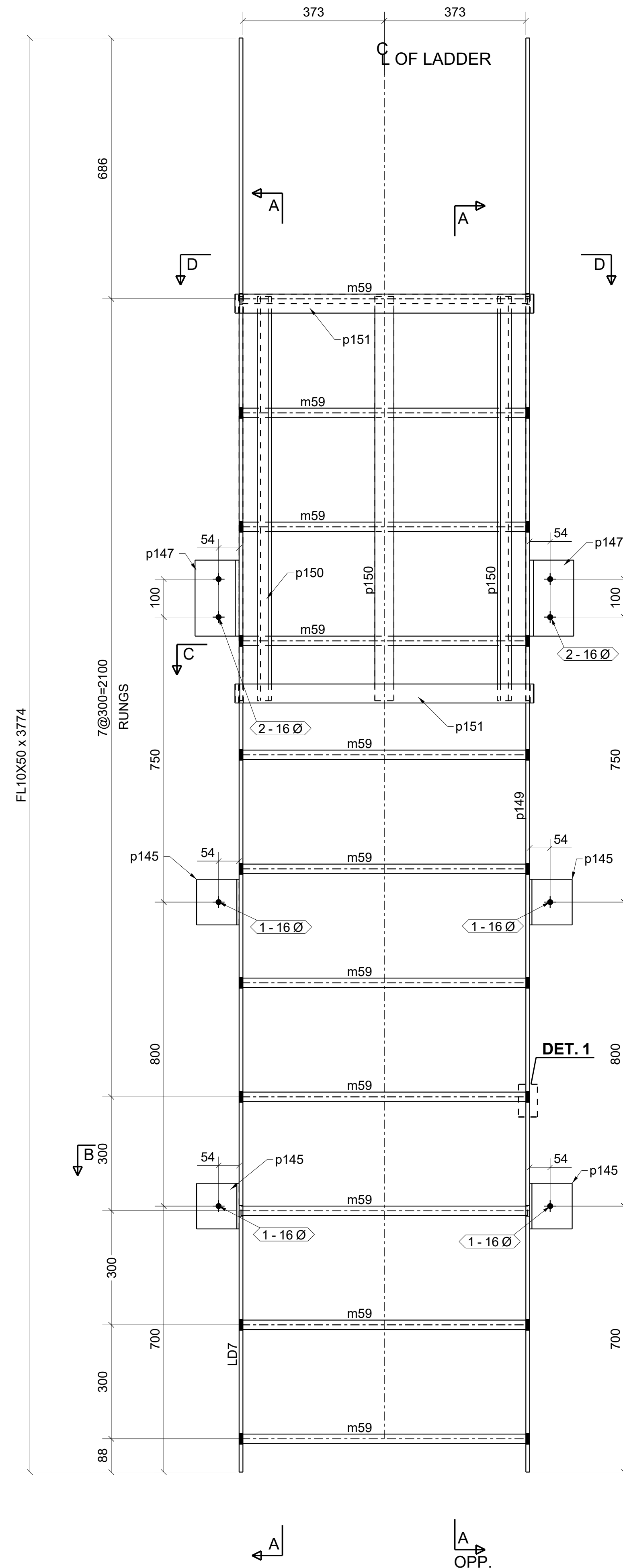
BILL OF MATERIAL					
MARK	QTY	DESCRIPTION	LENGTH	WEIGHT	REMARKS
LD3	1	CAGED_LADDER			SQ-2
LD3	1	FL10X50	5667	22	A36
m59	15	ROD25	755	42	300W
p64	3	FL6X102	313	5	300W
p73	1	FL10X50	5667	22	A36
p78	5	FL10X50	3511	69	300W
p80	5	FL10X50	2027	40	300W
p144	3	FL6X102	319	5	300W
p146	2	PL10X200	309	10	300W
TOTAL WEIGHT THIS DRAWING				214	

REV	DESCRIPTION	DATE
DESCRIPTION		LADDER
PROJECT NAME		
DRAWN BY		DATE:
CHECKED BY		DATE:
JOB No.		DRG No.
		LD3

HOLES: 20.64 DIA. U/N
FINISH/PAINT: SSPC-SP2/1 COAT STD. SHOP PRIMER
ELECTRODE: E70XX



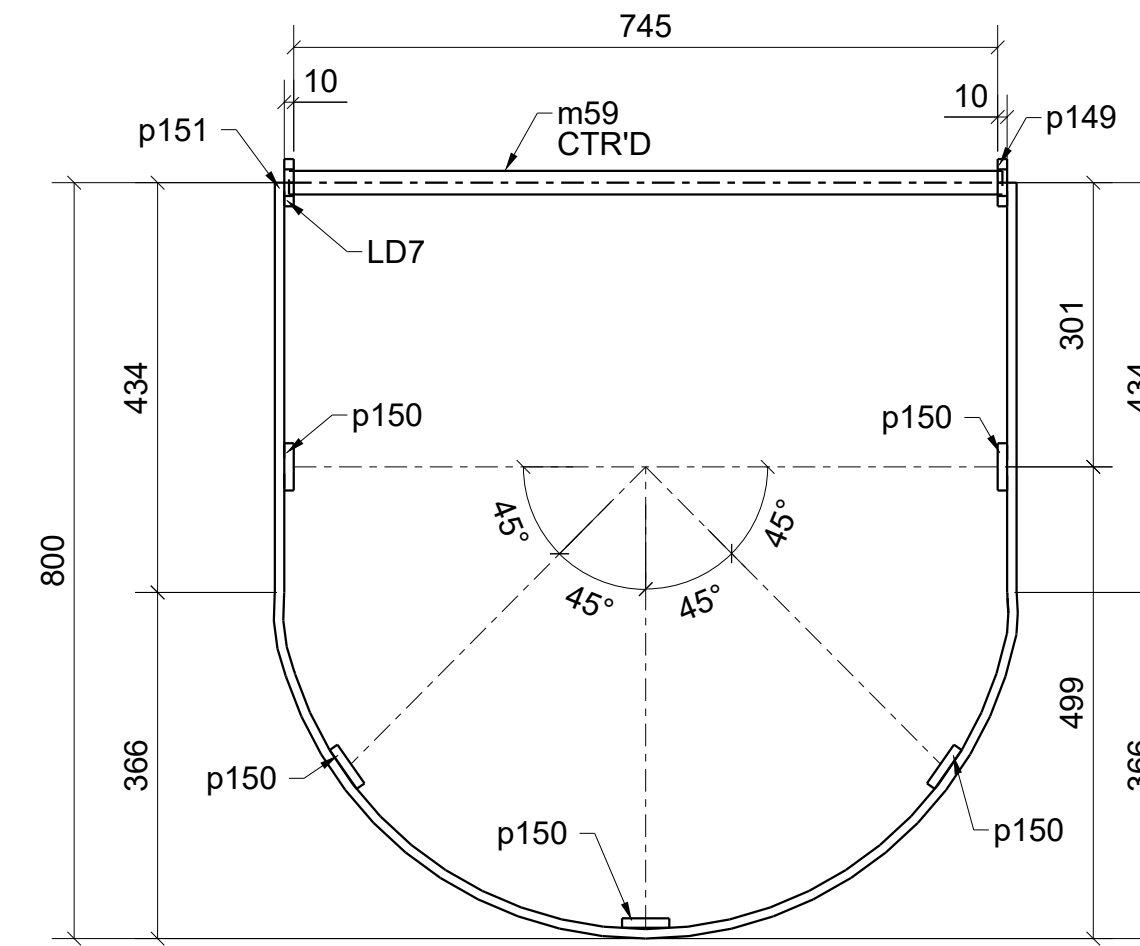
A-A



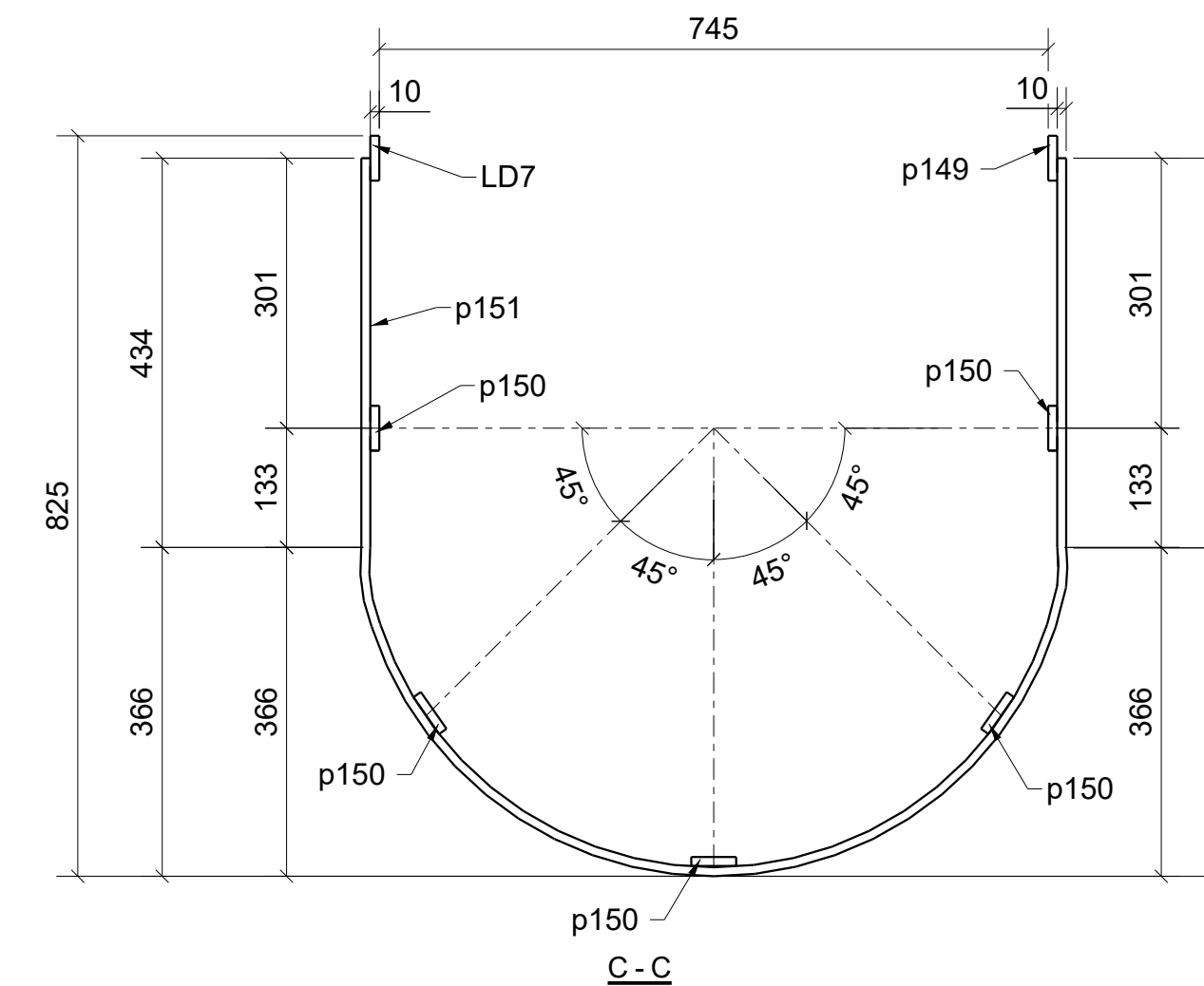
A

A

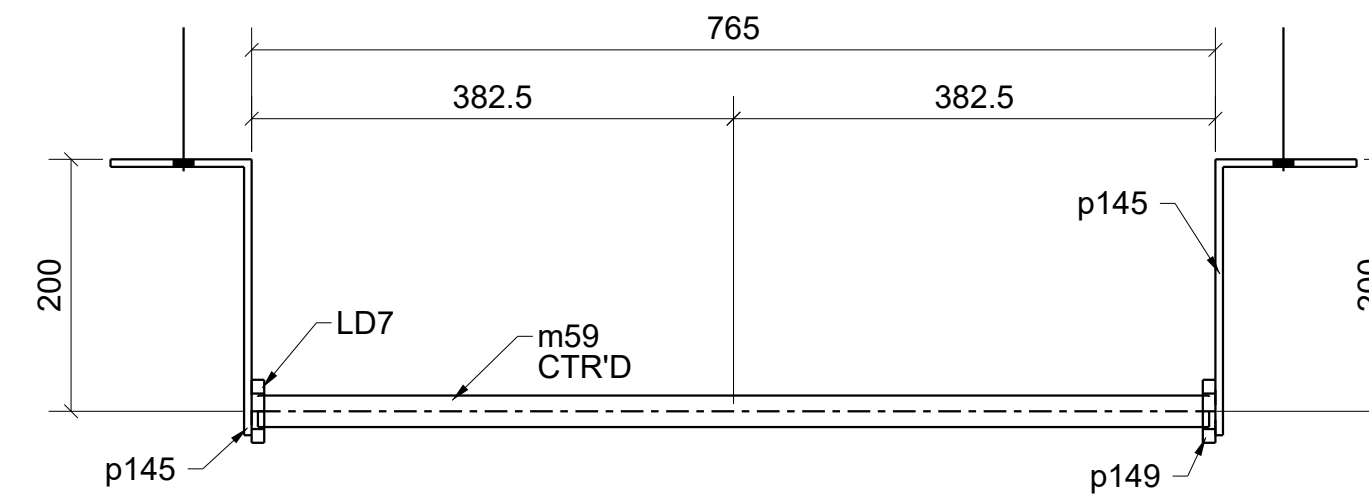
OPP.



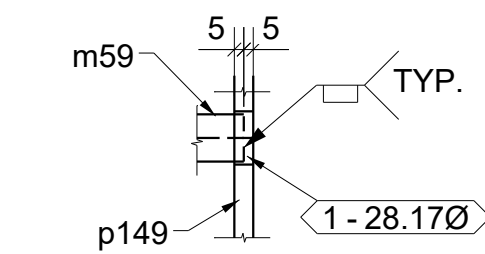
D-D



C-C



B-B



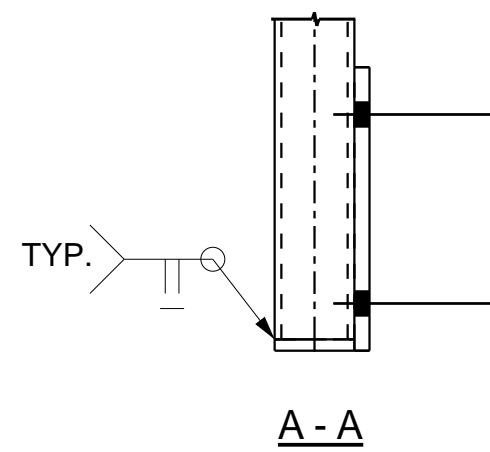
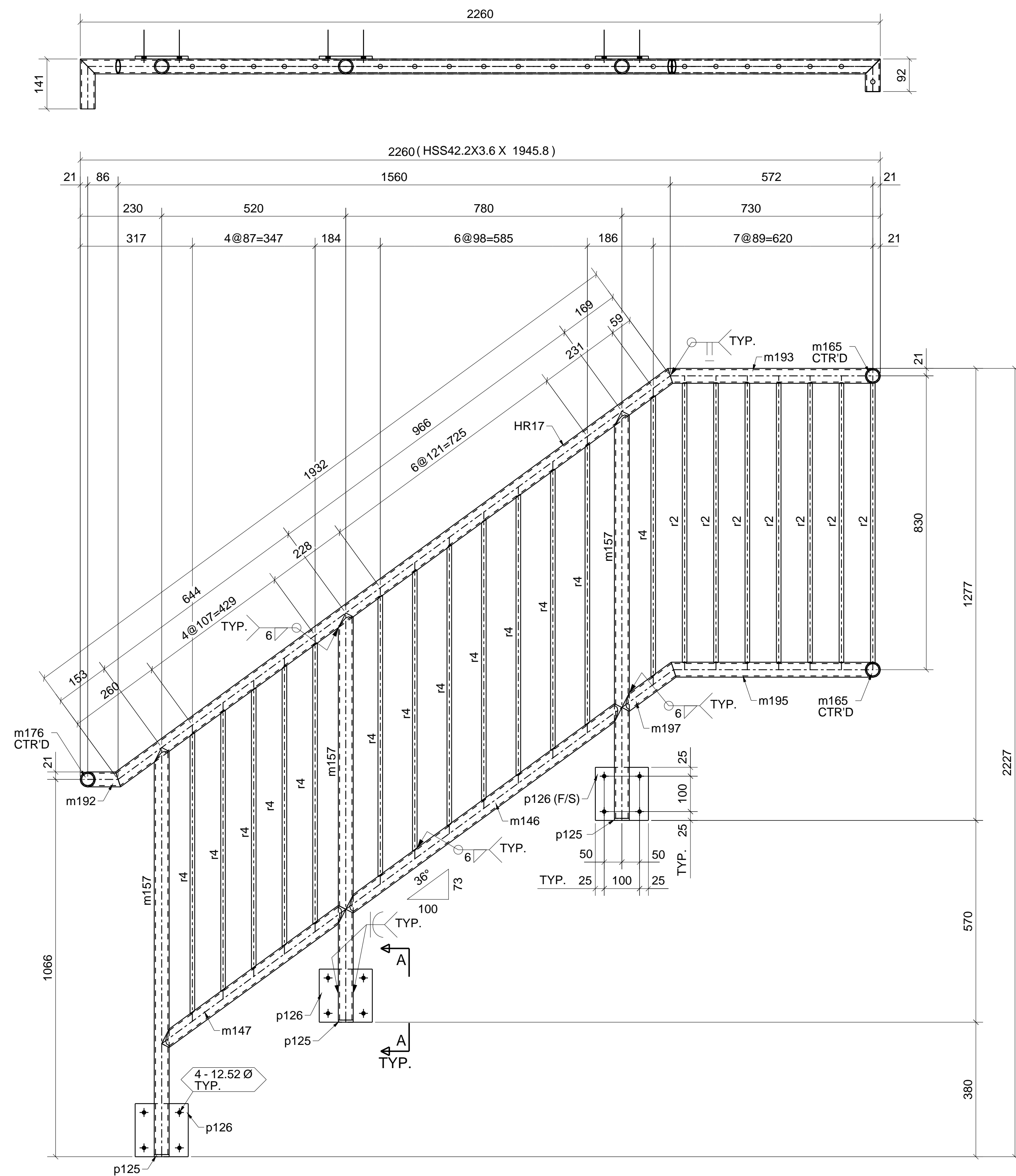
DETAIL 1

ONE - CAGED LADDER - LD7

BILL OF MATERIAL					
MARK	QTY	DESCRIPTION	LENGTH	WEIGHT	REMARKS
LD7	1	CAGED_LADDER			SQ-2
LD7	1	FL10X50	3774	15	A36
m59	11	ROD25	755	31	300W
p145	4	FL6X121	319	7	300W
p147	2	PL10X200	310	10	300W
p149	1	FL10X50	3774	15	A36
p150	5	FL10X50	1064	21	300W
p151	2	FL10X50	2024	16	300W
TOTAL WEIGHT THIS DRAWING				114	

REV	DESCRIPTION	DATE
	LADDER	
	PROJECT NAME	
	DRAWN BY	DATE:
	CHECKED BY	DATE:
	JOB No.	DRG No.
		LD7

HOLES: 20.64 DIA. U/N
FINISH/PAINT:
ELECTRODE: E70XX



ONE - HANDRAIL - HR17

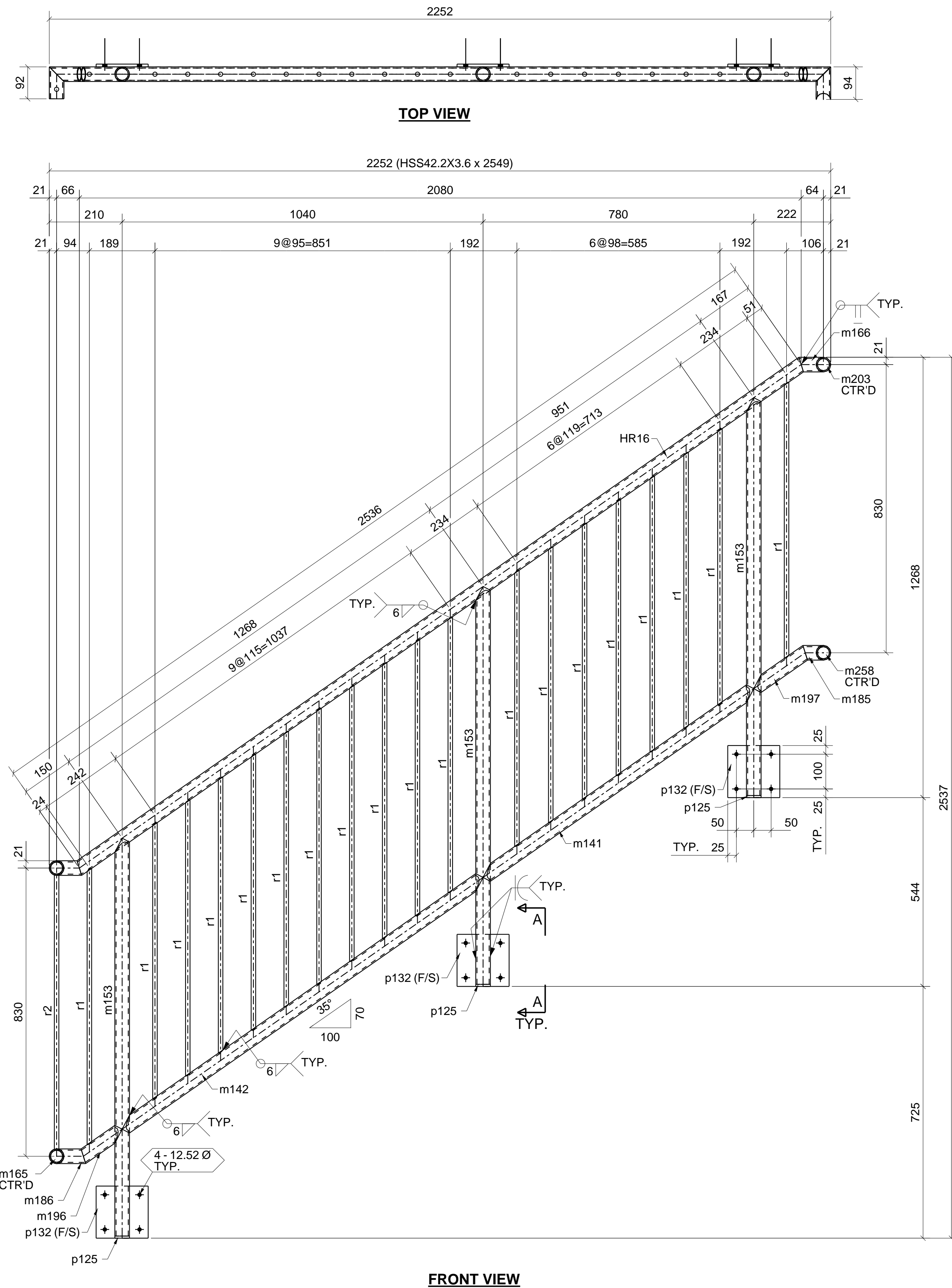
BILL OF MATERIAL

MARK	QTY	DESCRIPTION	LENGTH	WEIGHT	REMARKS
HR17	1	HANDRAIL			BEV-2
HR17	1	HSS42.2X3.6	1946	6	A500-GR.B
m146	1	HSS42.2X3.6	966	3	A500-GR.B
m147	1	HSS42.2X3.6	644	2	A500-GR.B
m157	3	HSS42.2X3.6	1150	11	A500-GR.B
m165	2	HSS42.2X3.6	92	1	A500-GR.B
m176	1	HSS42.2X3.6	141	0	A500-GR.B
m192	1	HSS42.2X3.6	114	0	A500-GR.B
m193	1	HSS42.2X3.6	600	2	A500-GR.B
m195	1	HSS42.2X3.6	591	2	A500-GR.B
m197	1	HSS42.2X3.6	188	1	A500-GR.B
p125	3	PL6X42	42	0	300W
p126	3	PL8X150	150	4	300W
r2	7	ROD13	791	5	300W
r4	13	ROD13	794	10	300W
TOTAL WEIGHT THIS DRAWING				47	

REV	DESCRIPTION	DATE

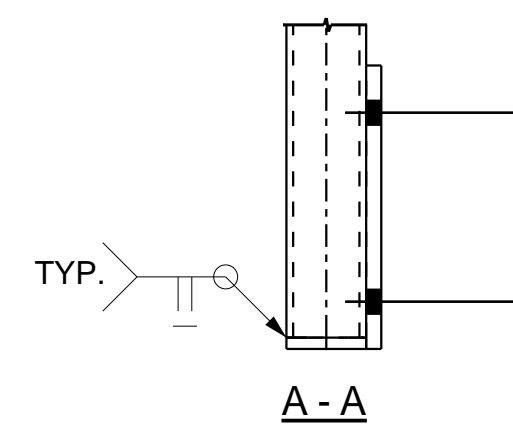
DESCRIPTION		HAND RAIL	
PROJECT NAME		DATE:	
DRAWN BY		DATE:	
CHECKED BY		DATE:	
JOB No.		DRG No.	HR17

HOLES: 20.64 DIA. U/N
 FINISH/PAINT: SSPC-SP2/1 COAT STD.SHOP PRIMER
 ELECTRODE: E70XX



TOP VIEW

FRONT VIEW



ONE - HANDRAIL - HR16

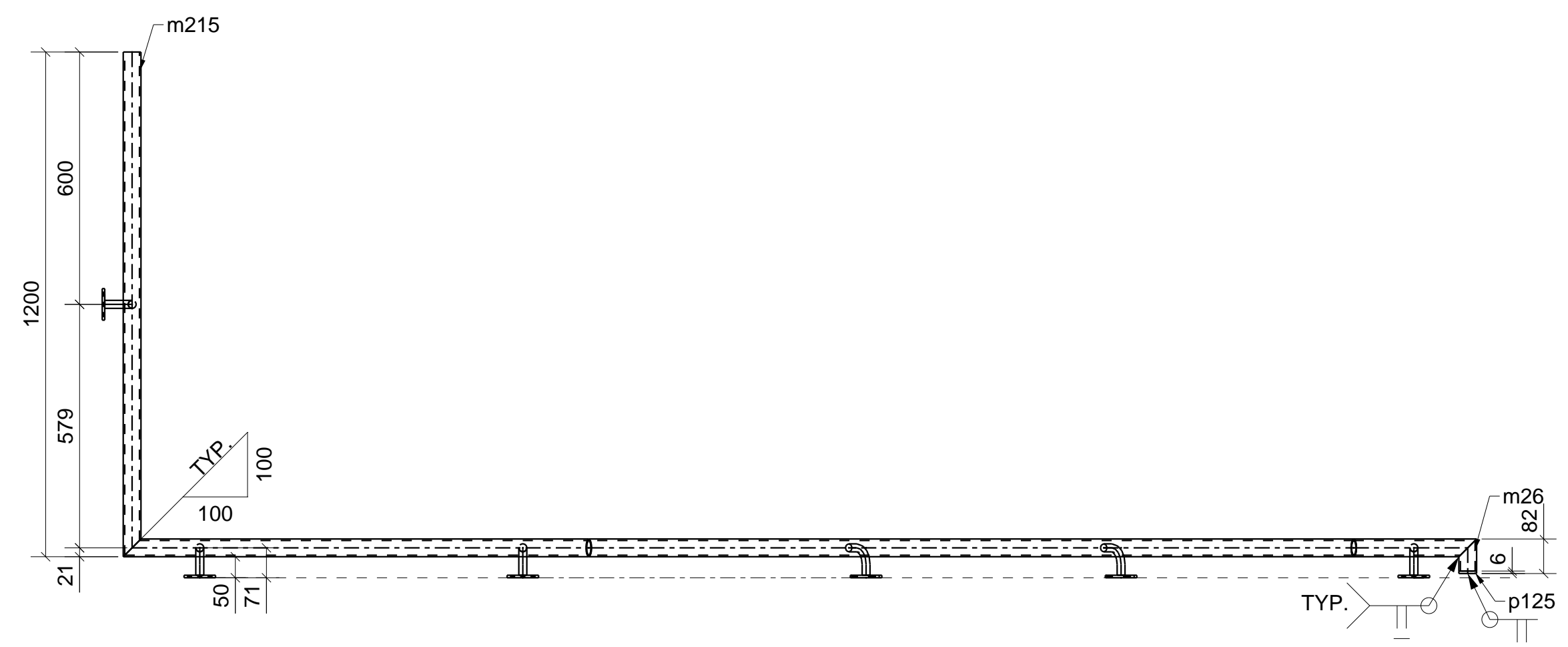
BILL OF MATERIAL

MARK	QTY	DESCRIPTION	LENGTH	WEIGHT	REMARKS
HR16	1	HANDRAIL			BEV-2
HR16	1	HSS42.2X3.6	2549	8	A500-GR.B
m141	1	HSS42.2X3.6	951	3	A500-GR.B
m142	1	HSS42.2X3.6	1268	4	A500-GR.B
m153	3	HSS42.2X3.6	1146	11	A500-GR.B
m165	2	HSS42.2X3.6	92	1	A500-GR.B
m166	2	HSS42.2X3.6	92	1	A500-GR.B
m185	1	HSS42.2X3.6	80	0	A500-GR.B
m186	1	HSS42.2X3.6	105	0	A500-GR.B
m196	1	HSS42.2X3.6	143	0	A500-GR.B
m197	1	HSS42.2X3.6	187	1	A500-GR.B
m203	1	HSS42.2X3.6	92	0	A500-GR.B
m258	1	HSS42.2X3.6	94	0	A500-GR.B
p125	3	PL6X42	42	0	300W
p132	3	PL8X150	150	4	300W
r1	19	ROD13	796	14	300W
r2	1	ROD13	791	1	300W
TOTAL WEIGHT THIS DRAWING				49	

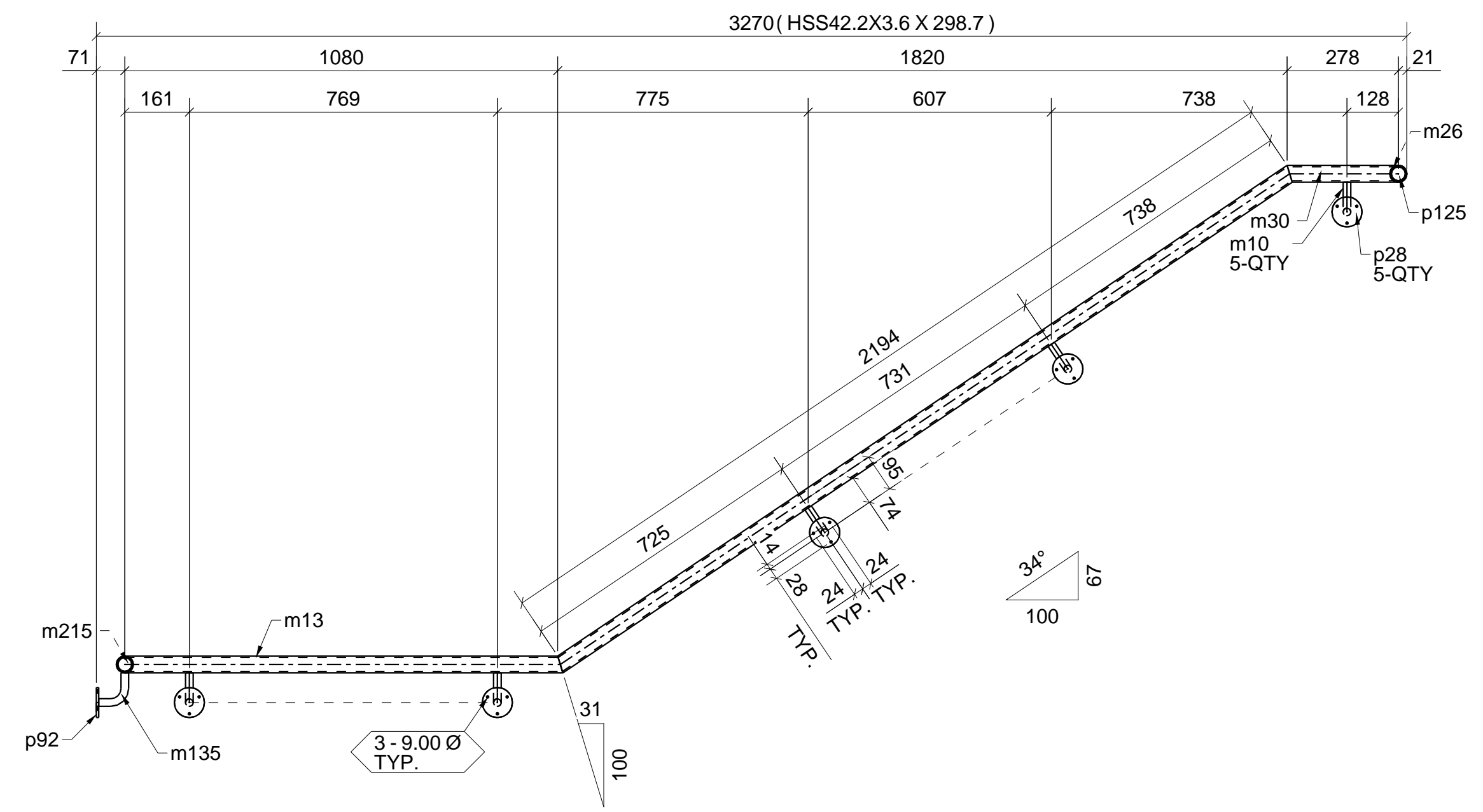
REV	DESCRIPTION	DATE

DESCRIPTION		PROJECT NAME	
DRAWN BY	DATE:	JOB No.	DRG No.
CHECKED BY	DATE:		HR16

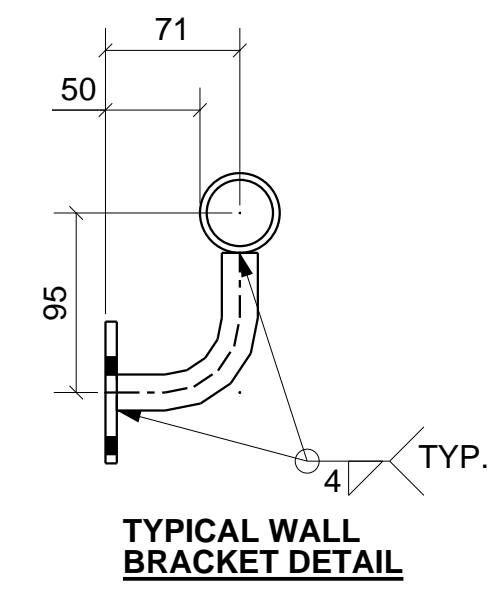
HOLES: 20.64 DIA. U/N
 FINISH/PAINT: SSPC-SP2/1 COAT STD.SHOP PRIMER
 ELECTRODE: E70XX



TOP VIEW



FRONT VIEW



TYPICAL WALL BRACKET DETAIL

ONE - WALL RAIL - WR1

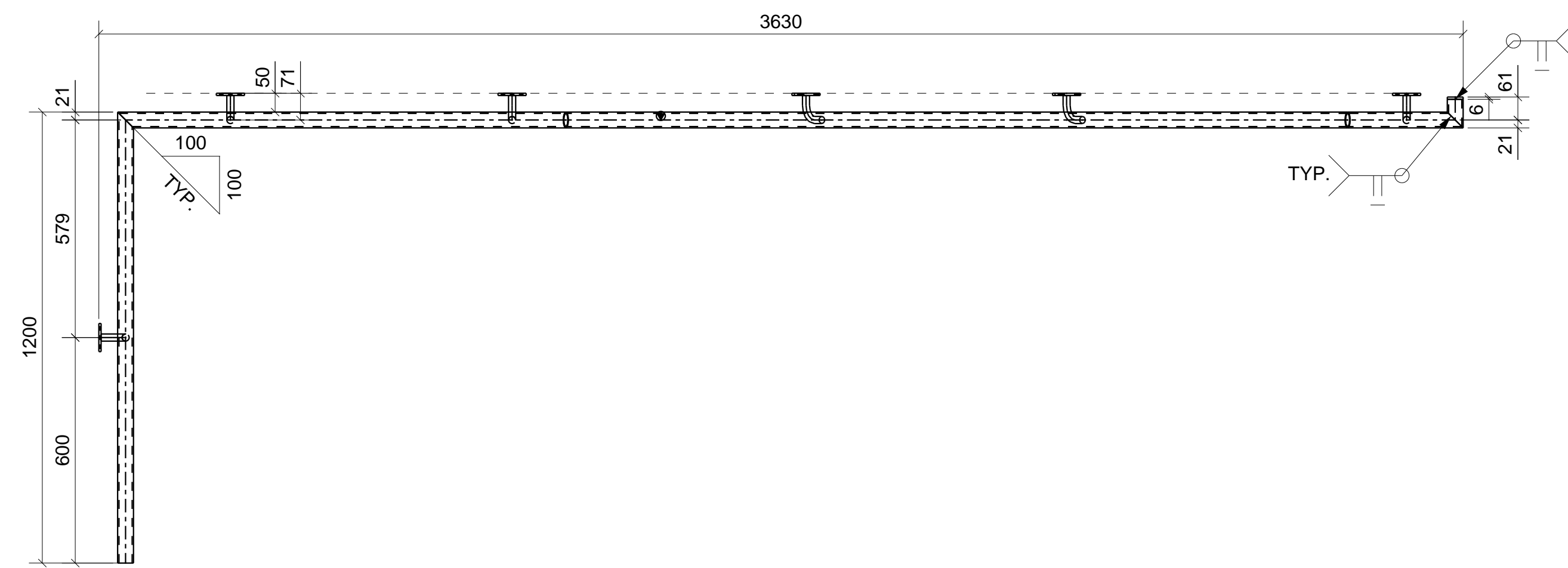
BILL OF MATERIAL

MARK	QTY	DESCRIPTION	LENGTH	WEIGHT	REMARKS
WR1	1	WALL RAIL			BEV-2
WR1	1	HSS42.2X3.6	2207	7	A500-GR.B
m10	5	RB19.05	107	1	300W
m13	1	HSS42.2X3.6	1114	4	A500-GR.B
m26	1	HSS42.2X3.6	76	0	A500-GR.B
m30	1	HSS42.2X3.6	299	1	A500-GR.B
m135	1	RB19.05	109	0	300W
m215	1	HSS42.2X3.6	1200	4	A500-GR.B
p28	5	PL6X75	75	1	300W
p92	1	PL6X75	75	0	300W
p125	1	PL6X42	42	0	300W
TOTAL WEIGHT THIS DRAWING				18	

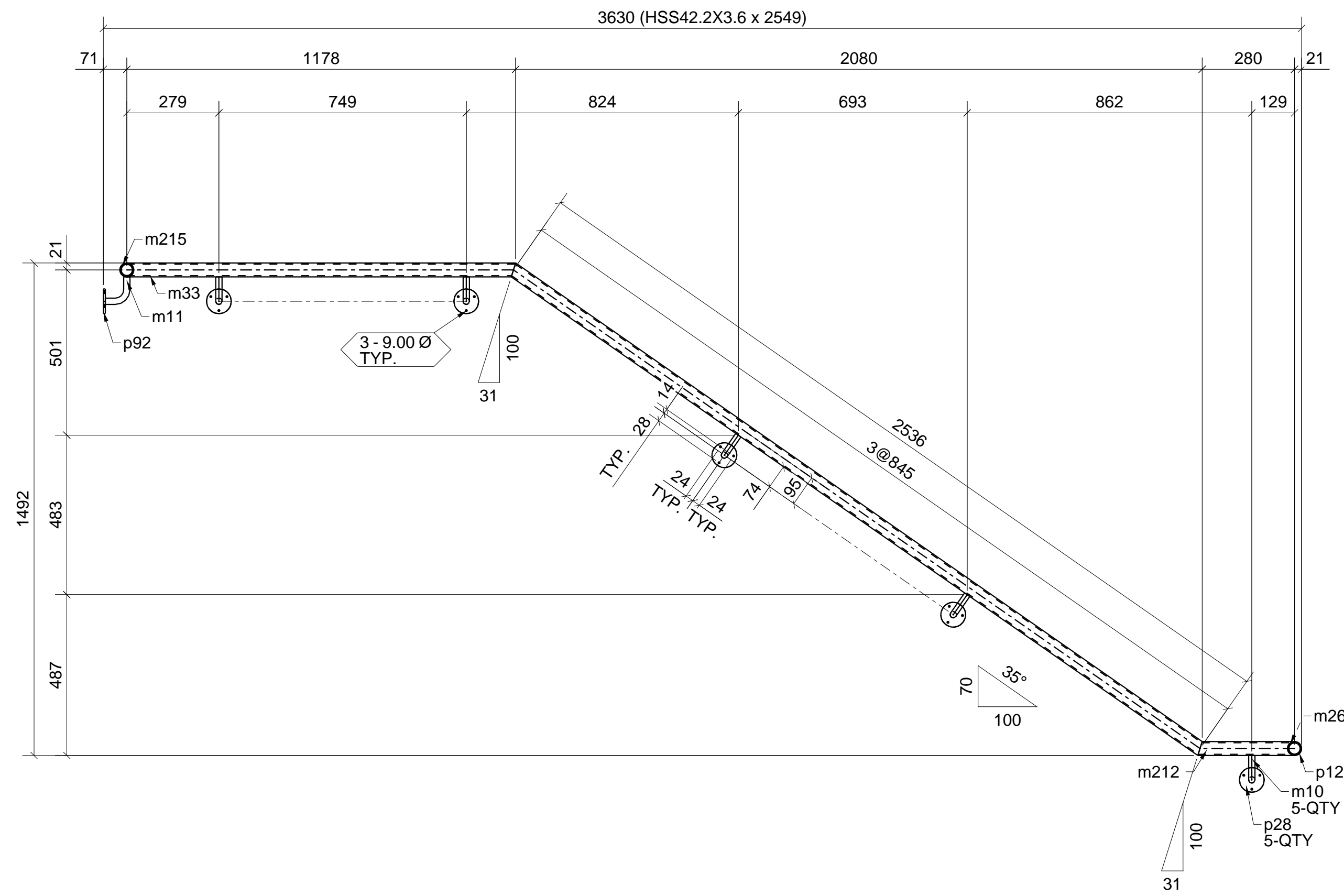
REV	DESCRIPTION	DATE

DESCRIPTION		WALL RAIL	
PROJECT NAME		DATE:	
DRAWN BY		DATE:	
CHECKED BY		DATE:	
JOB No.		DRG No.	WR1

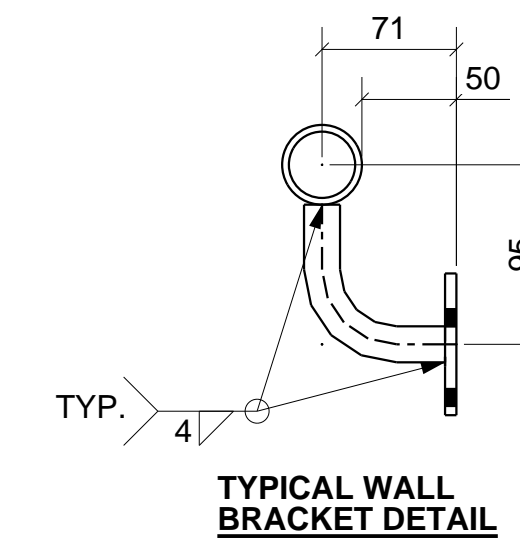
HOLES: 20.64 DIA. U/N
FINISH/PAINT: SSSPC-SP2/1 COAT STD.SHOP PRIMER
ELECTRODE: E70XX



TOP VIEW



FRONT VIEW



TYPICAL WALL BRACKET DETAIL

7 - WALL RAILS - WR2

BILL OF MATERIAL

MARK	QTY	DESCRIPTION	LENGTH	WEIGHT	REMARKS
WR2	7	WALL RAILS			BEV-2
WR2	7	HSS42.2X3.6	2549	56	A500-GR.B
m10	35	RB19.05	107	8	300W
m11	7	RB19.05	109	2	300W
m26	7	HSS42.2X3.6	76	2	A500-GR.B
m33	7	HSS42.2X3.6	1199	27	A500-GR.B
m212	7	HSS42.2X3.6	314	7	A500-GR.B
m215	7	HSS42.2X3.6	1200	27	A500-GR.B
p28	35	PL6X75	75	7	300W
p92	7	PL6X75	75	1	300W
p125	7	PL6X42	42	0	300W
TOTAL WEIGHT THIS DRAWING				137	

REV	DESCRIPTION	DATE

DESCRIPTION		WALL RAIL	
PROJECT NAME		DATE:	
DRAWN BY		DATE:	
CHECKED BY		DATE:	
JOB No.		DRG No.	WR2

HOLES: 20.64 DIA. U/N
 FINISH/PAINT: S5PC-SP2/1 COAT STD.SHOP PRIMER
 ELECTRODE: E70XX