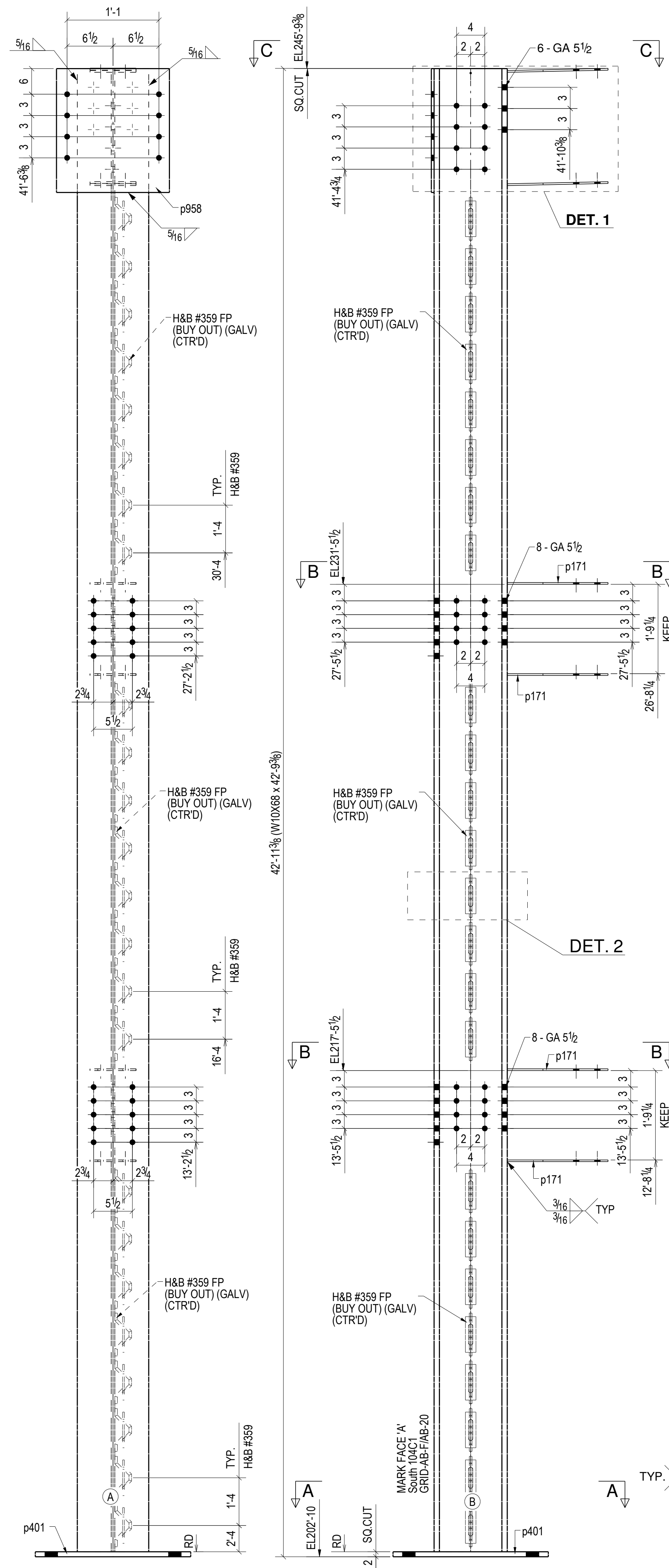


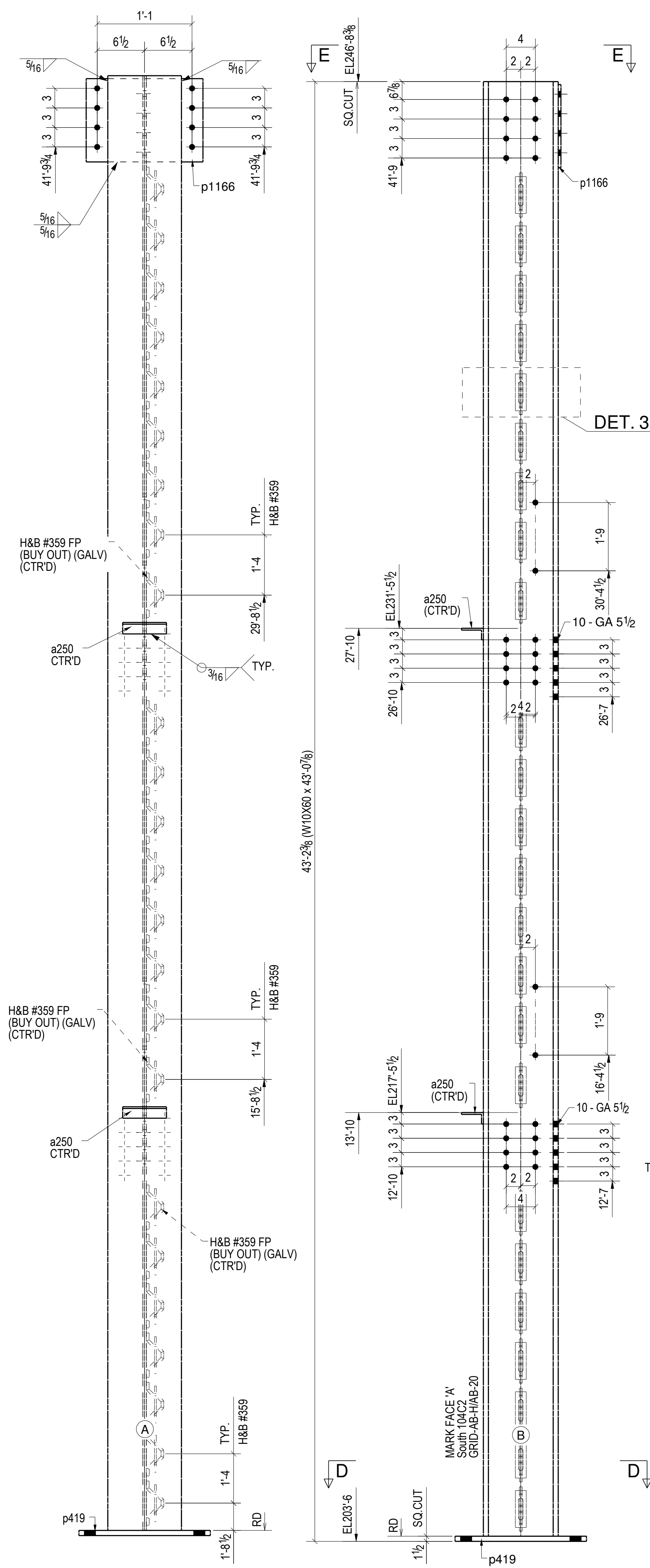
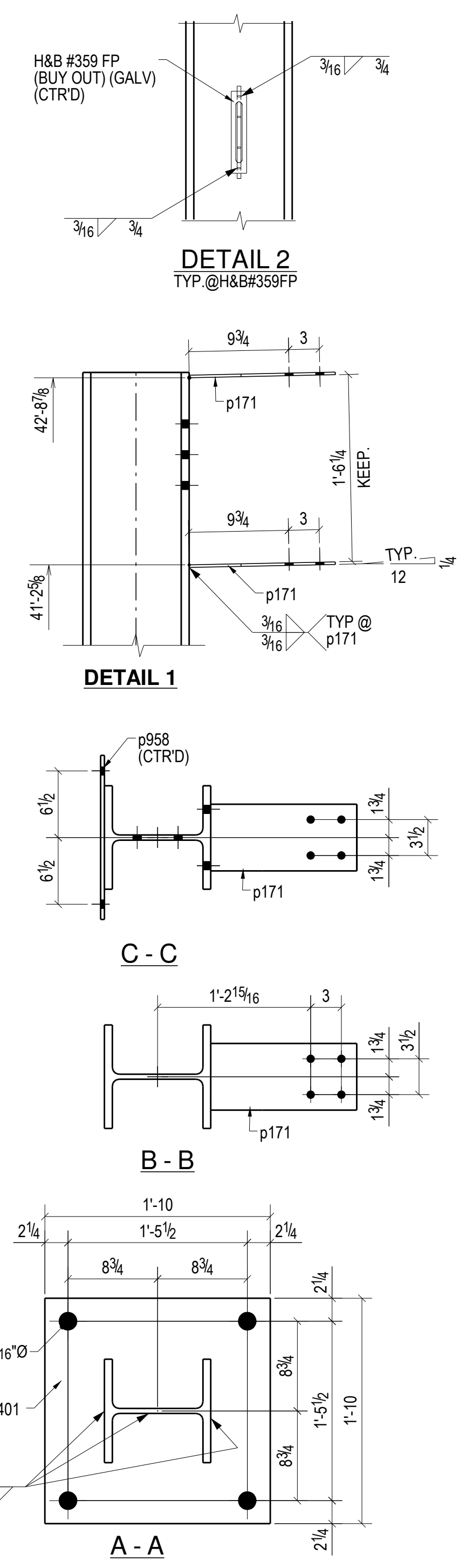
BILL OF MATERIAL

SHIP MARK	PIECE MARK	QTY	DESCRIPTION	LENGTH	REMARKS
104C1		1	W10X68	42'-9 3/8"	SO-2 A92 UNPAINTED
	p171	6	PL1/4"X6 1/2"	1'-2 1/4"	A572-50
	p401	1	PL2"X22"	1'-10"	A572-50
	p958	1	PL3/8"X16"	1'-9"	A572-50
	1	24	H&B#359FP	BOI	GALVANIZED
104C2		1	W10X60	43'-0 7/8"	SO-2 A92 UNPAINTED
	a250	2	L3X3X1/4	0'-6"	A36
	p419	1	PL1 1/2"X18"	1'-6"	A572-50
	p1166	1	PL3/8"X16"	1'-9"	A572-50
	1	24	H&B#359FP	BOI	GALVANIZED



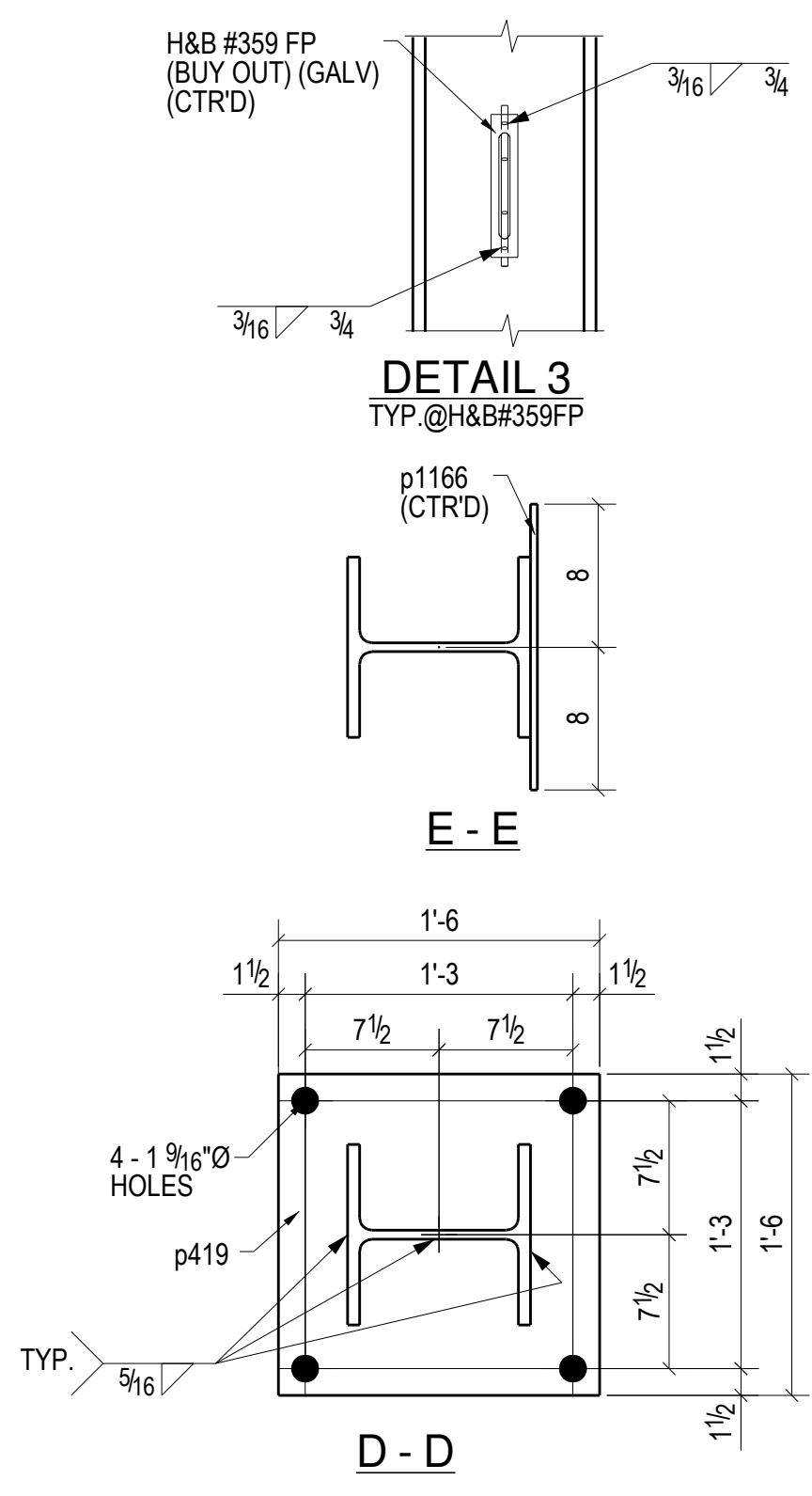
ONE - COLUMN - 104C1 UNPAINTED

W 10 3/8" x 68
F 10 1/8" x 3/4"



ONE - COLUMN - 104C2 UNPAINTED

W 10 1/4" x 60
F 10 1/8" x 11/16"



REV.	DATE	DESCRIPTION	BY	CHKD BY

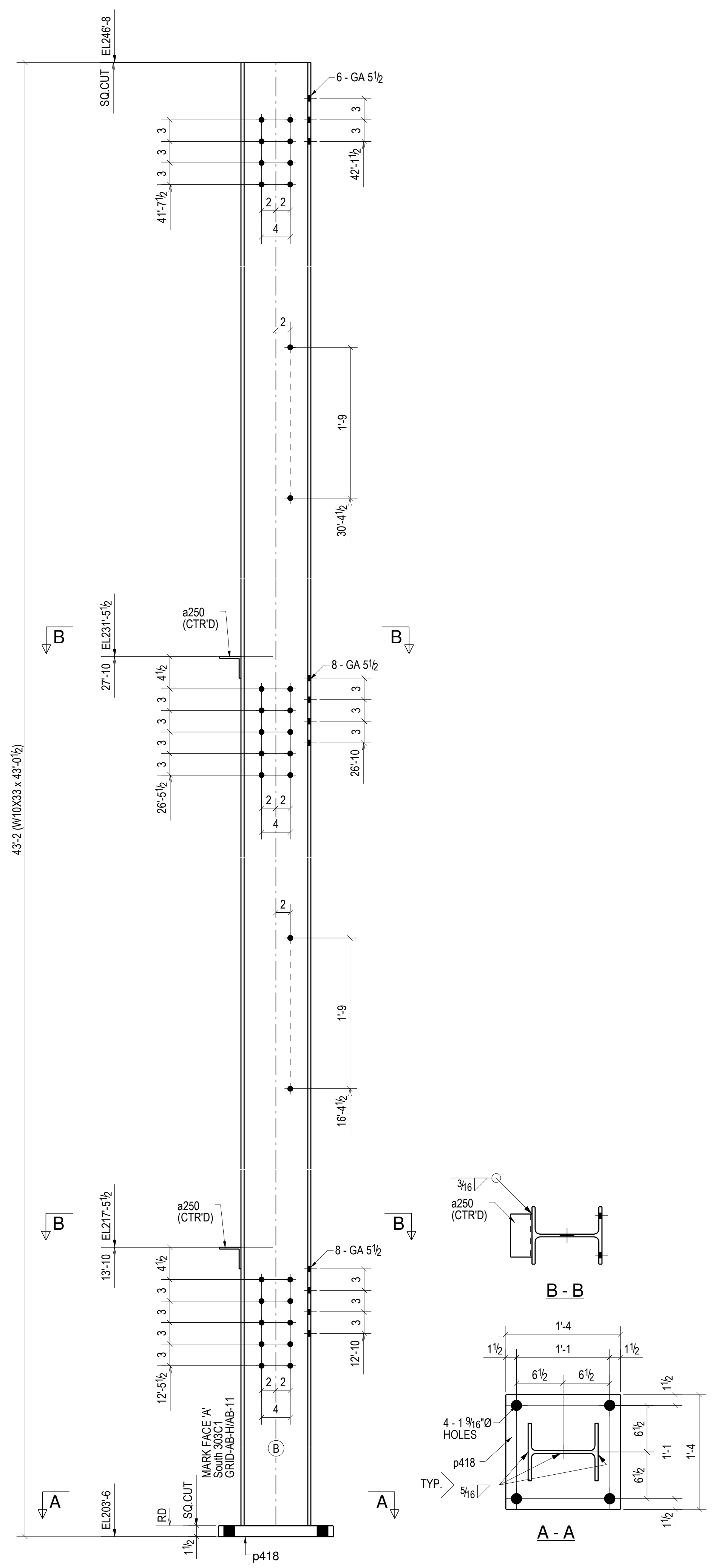
OPEN HOLES 13/16 UNO
PAINT AS NOTED IN B.O.M

ARCHITECT	
ENGINEER	
PROJECT NAME	
LOCATION	
CONTRACTOR	
DESCRIPTION	COLUMN
DRAWN BY	
CHECKED BY	
APPROVED BY	

JOB No.
DRG No. 104

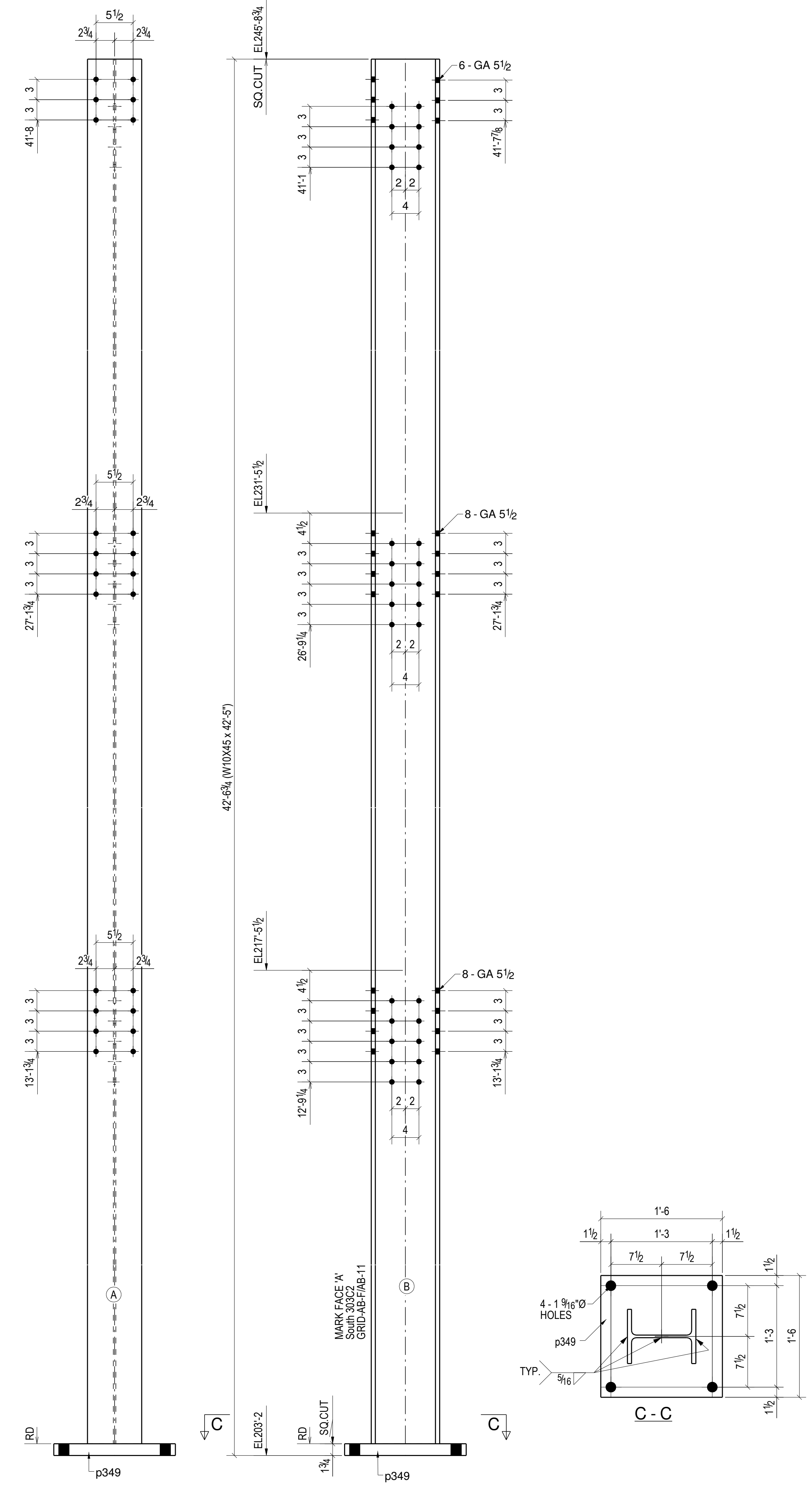
BILL OF MATERIAL

SHIP MARK	PIECE MARK	QTY	DESCRIPTION	LENGTH	REMARKS
303C1		1	W10X33	43'-0 1/2"	A992 UNPAINTED
	a250	2	L3X3X1/4	0'-6"	A36
	p418	1	PL1 1/2"X16"	1'-4"	A572-50
303C2		1	W10X45	42'-5"	A992 UNPAINTED
	p349	1	PL1 3/4"X18"	1'-6"	A572-50



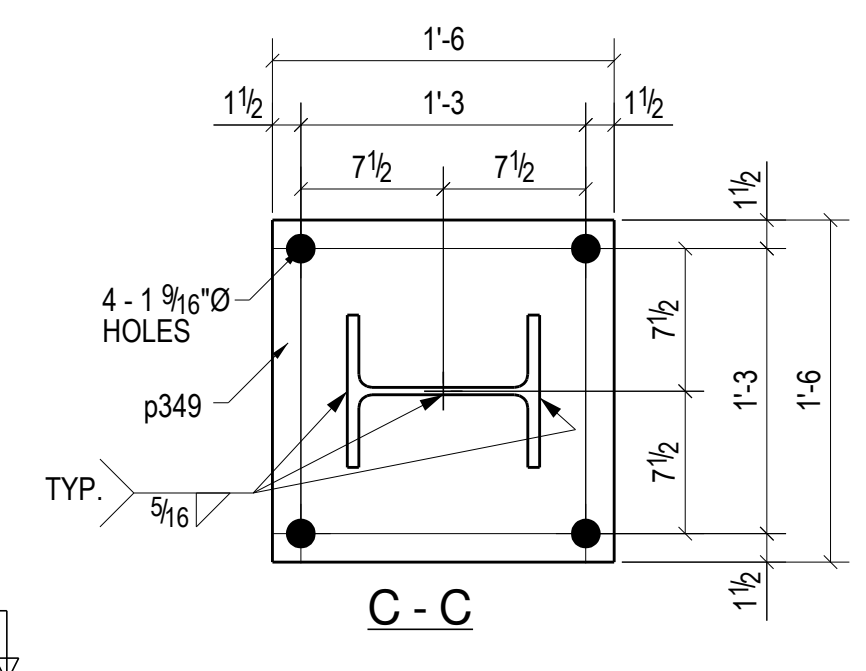
ONE - COLUMN - 303C1 UNPAINTED

W 3.34" x 5.16"
F 6" x 7.16"



ONE - COLUMN - 303C2 UNPAINTED

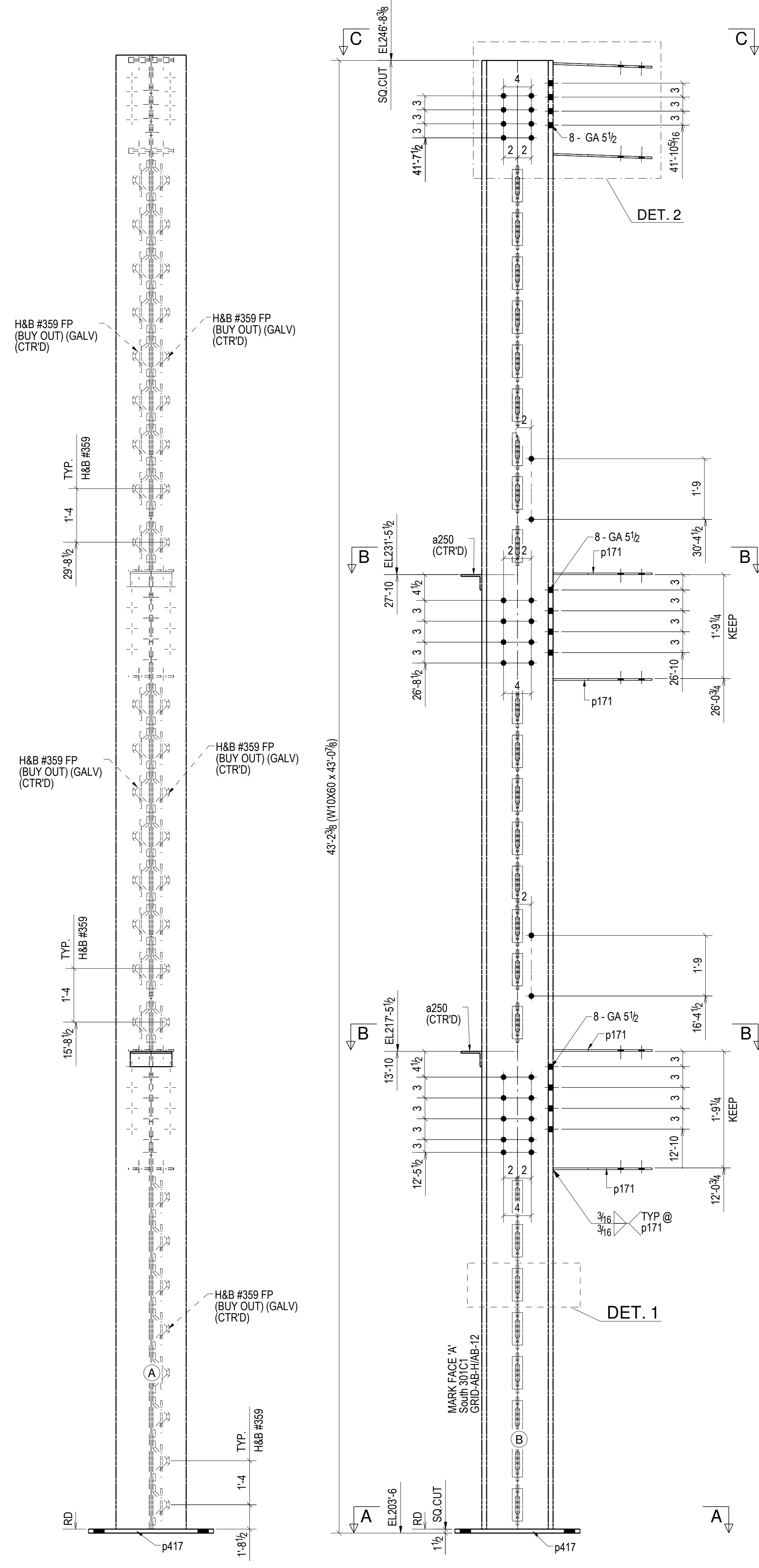
W 10.18" x 3.38"
F 8" x 3.38"



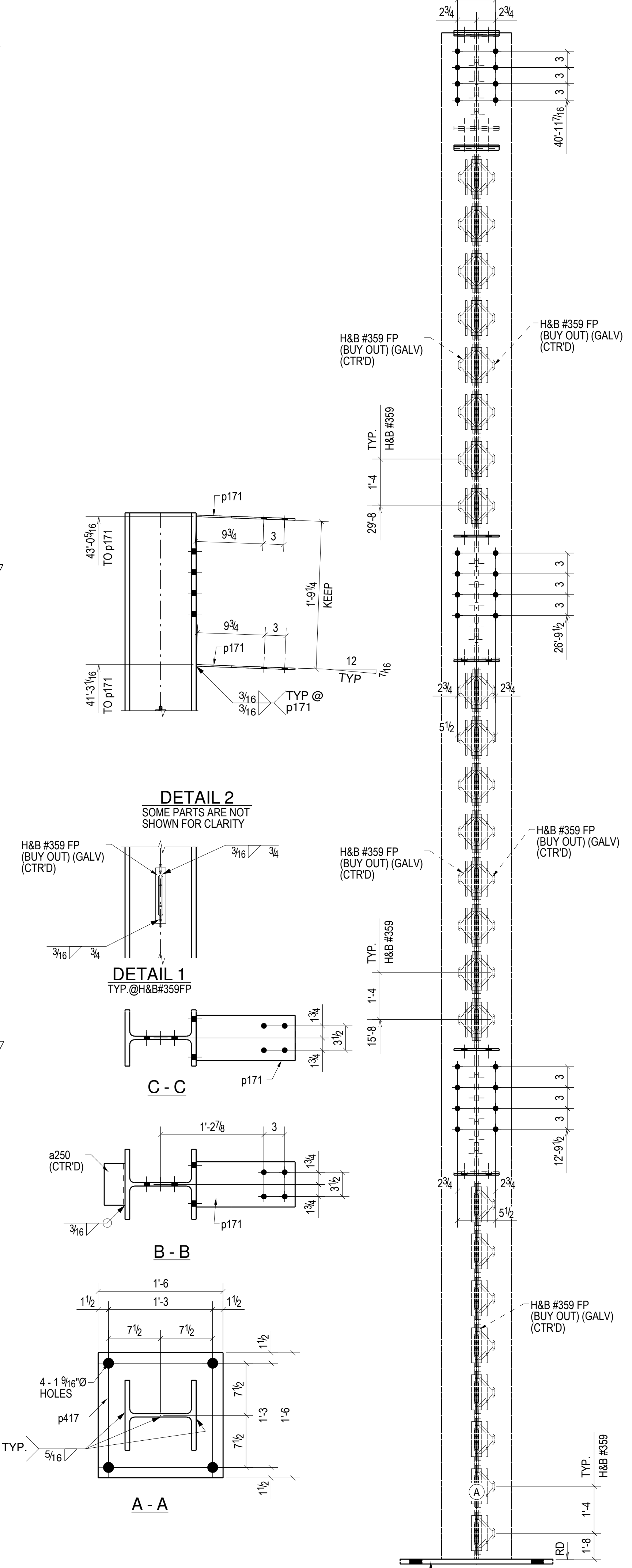
REV.	DATE	DESCRIPTION	BY	CHKD BY
OPEN HOLES	13/16	UNO		
PAINT AS NOTED IN B.O.M				
ARCHITECT ENGINEER				
PROJECT NAME				
LOCATION				
CONTRACTOR				
DESCRIPTION COLUMN DETAILS				
DRAWN BY				
CHECKED BY				
APPROVED BY				

BILL OF MATERIAL

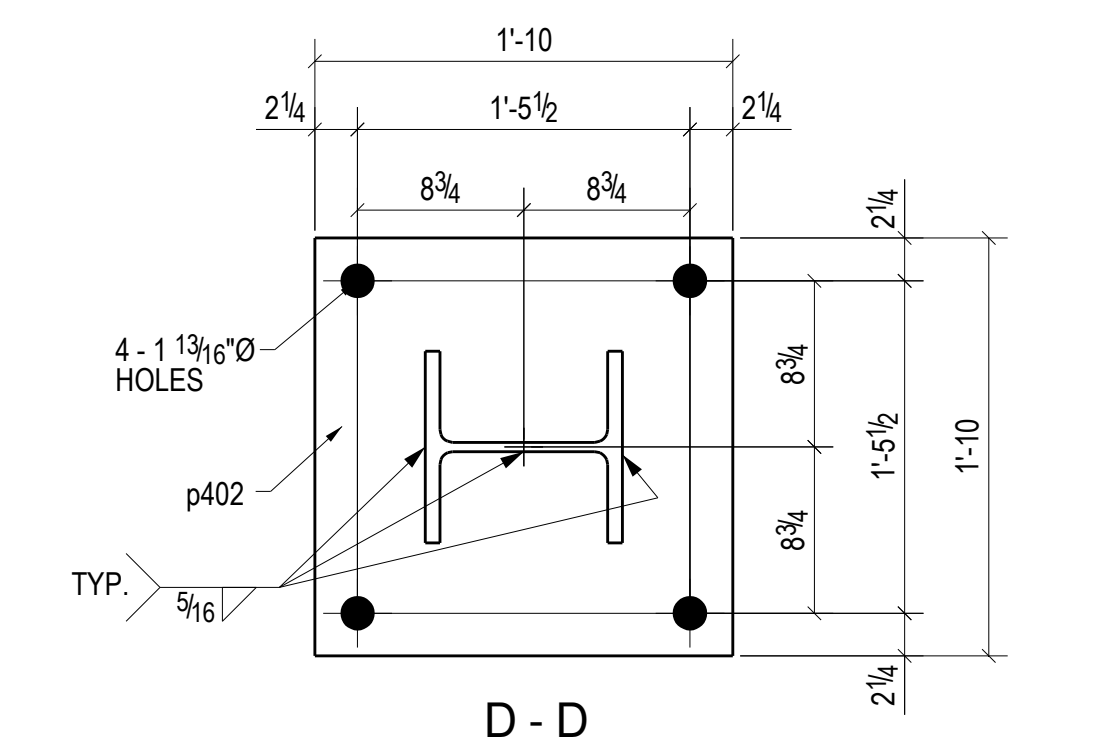
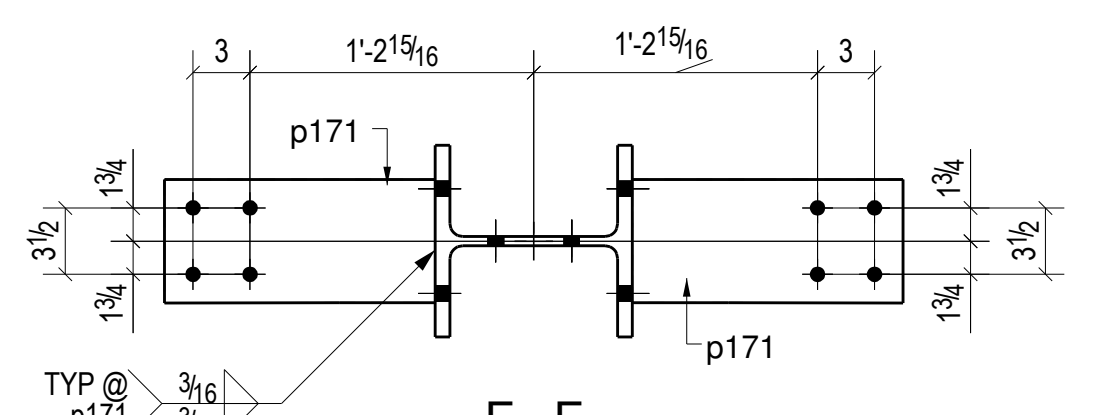
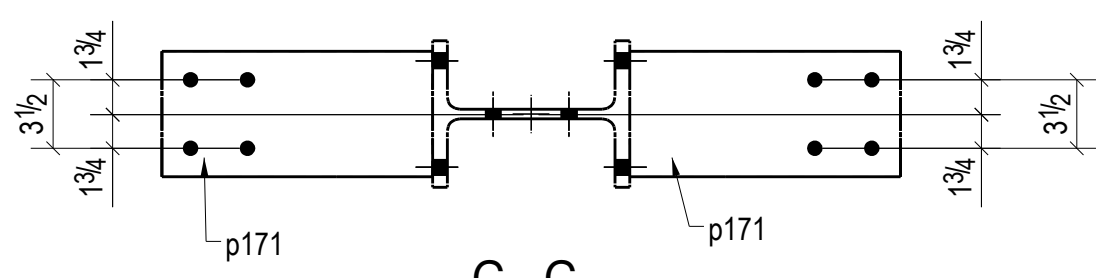
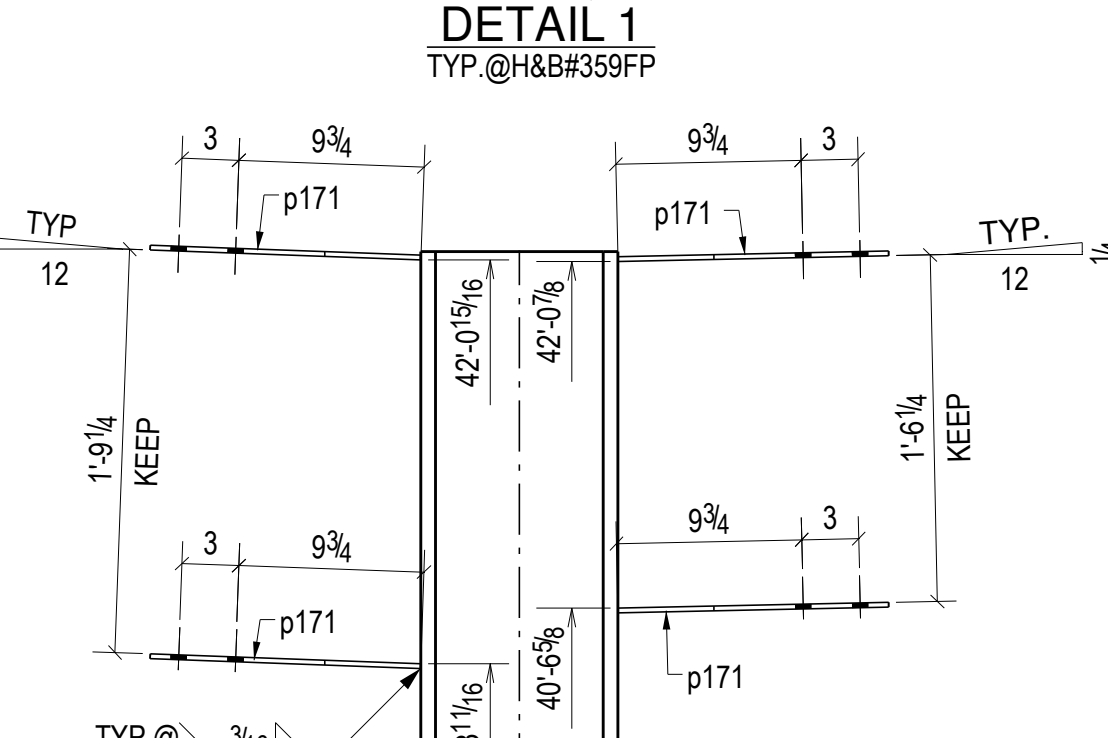
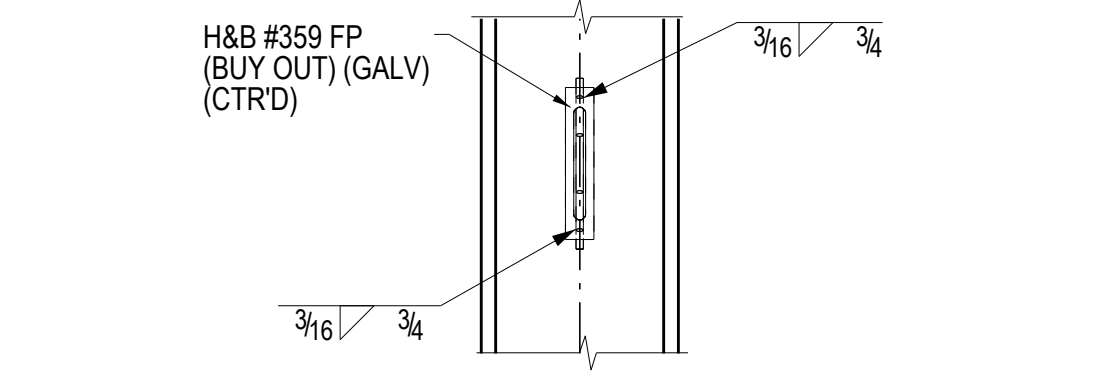
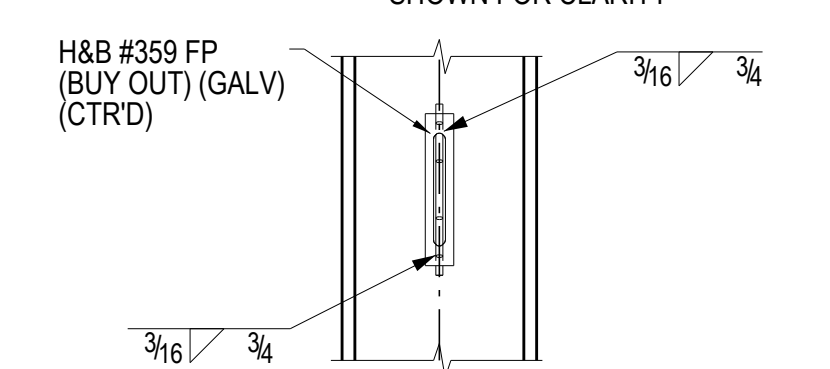
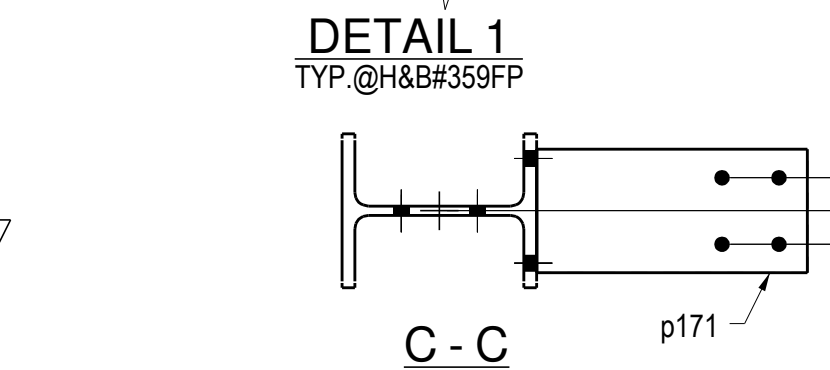
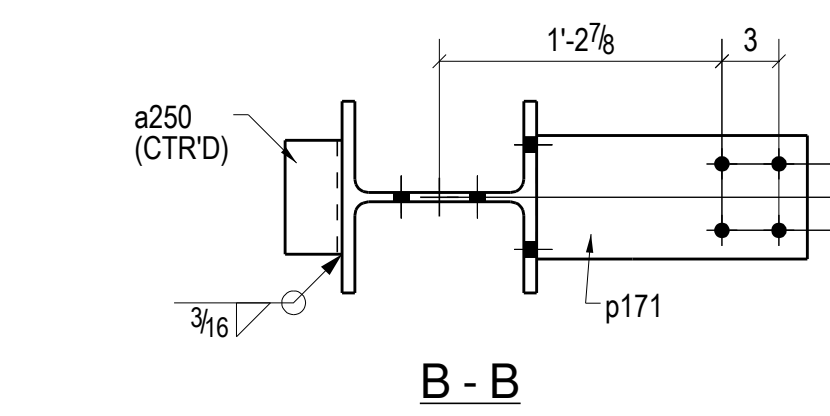
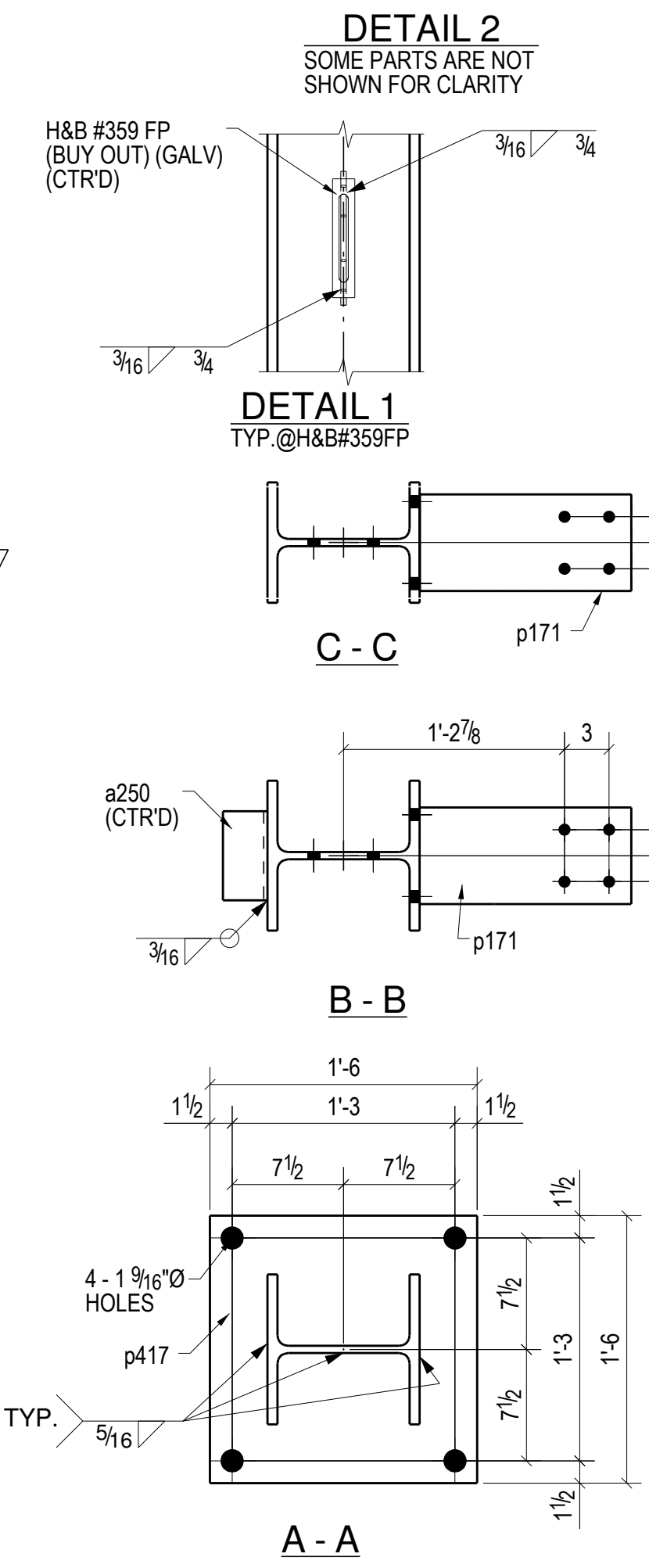
SHIP MARK	PIECE MARK	QTY	DESCRIPTION	LENGTH	REMARKS
301C1		1	W10X60	43'-0 7/8"	A92 UNPAINTED
	a250	2	L3X3X1/4	0'-6"	A36
	p171	6	PL1/4"X6 1/2"	1'-2 1/4"	A572-50
	p417	1	PL1 1/2"X18"	1'-6"	A572-50
		1	42	H&B#359FP	BOI GALVANIZED
301C2		1	W10X68	42'-1 3/8"	A92 UNPAINTED
	p171	12	PL1/4"X6 1/2"	1'-2 1/4"	A572-50
	p402	1	PL2"X22"	1'-10"	A572-50
		1	88	H&B#359FP	BOI GALVANIZED



ONE - COLUMN - 301C1 UNPAINTED



ONE - COLUMN - 301C2 UNPAINTED

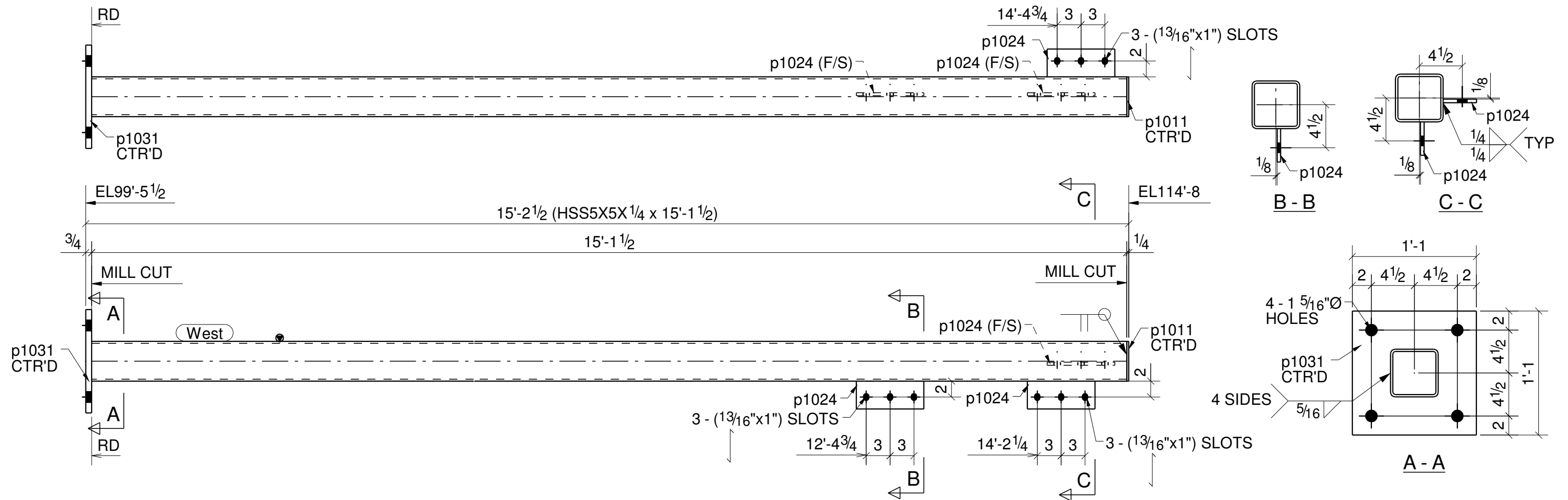


REV.	DATE	DESCRIPTION	BY	CHKD BY
OPEN HOLES	13/16	UNO		
PAINT AS NOTED IN B.O.M				
ARCHITECT ENGINEER				
PROJECT NAME				
LOCATION				
CONTRACTOR				
DESCRIPTION COLUMN DETAILS				
DRAWN BY				
CHECKED BY				
APPROVED BY				
				JOB No.
				DRG No. 301

W 10 1/4" x 7 1/8"
F 10 1/8" x 1 1/16"

W 10 3/8" x 1 1/2"
F 10 1/8" x 3/4"

GRID LOCATION	BOTTOM ELEVATION
K/2.3	99'-5"1/2



ONE - COLUMN - 1001

BILL OF MATERIAL

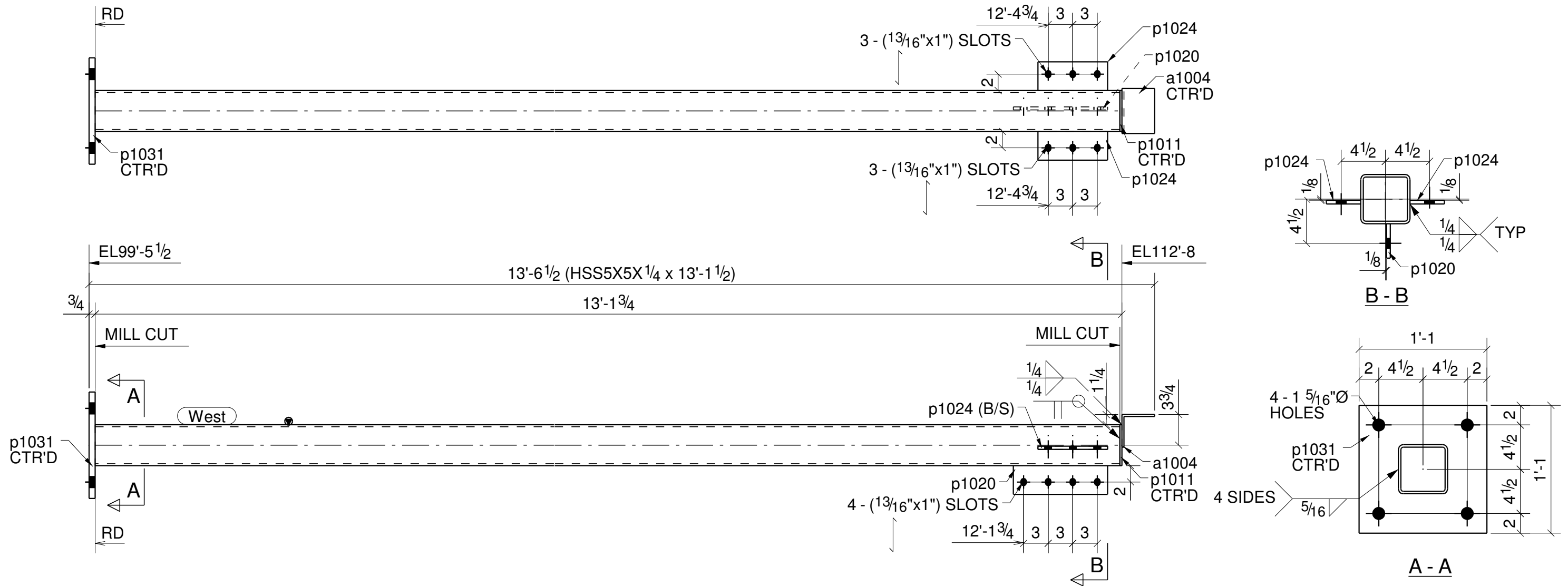
Qty Ea.	Qty Tot	Piece Mark	Description	Length	Weight Total	Remarks	Adv Mill #	Steel Grade
	1	1001	COLUMN					
1	1		HSS5X5X1/4	15'-1 1/2"	221	SQ-2		A500-GR.C
1	1	p1011	PL1/4"X5"	0'-5"	2			A36
3	3	p1024	PL3/8"X3 1/2"	0'-8 1/2"	9			A36
1	1	p1031	PL3/4"X13"	1'-1"	36			A36

SURFACE PREPARATION : SSPC SP3

STEEL	ASTM A36	UNO
ELECTRODES	E70XX	UNO
WELDS	1/4" FILLET	UNO
OPEN HOLES	13/16Ø	UNO
BOLTS	A325N	UNO
PAINT	ONE COAT OF SHOP PRIMER	UNO

DATE	NO.	DESCRIPTION	BY

GRID LOCATION	BOTTOM ELEVATION
K/6	99'-5"1/2



BILL OF MATERIAL

Qty Ea.	Qty Tot	Piece Mark	Description	Length	Weight Total	Remarks	Adv Mill #	Steel Grade
	1	1005	COLUMN					
1	1		HSS5X5X1/4	13'-1 1/2"	192	SQ-2		A500-GR.C
1	1	a1004	L4X4X1/4	0'-5 1/2"	3			A36
1	1	p1011	PL1/4"X5"	0'-5"	2			A36
1	1	p1020	PL3/8"X3 1/2"	0'-11 1/2"	4			A36
2	2	p1024	PL3/8"X3 1/2"	0'-8 1/2"	6			A36
1	1	p1031	PL3/4"X13"	1'-1"	36			A36

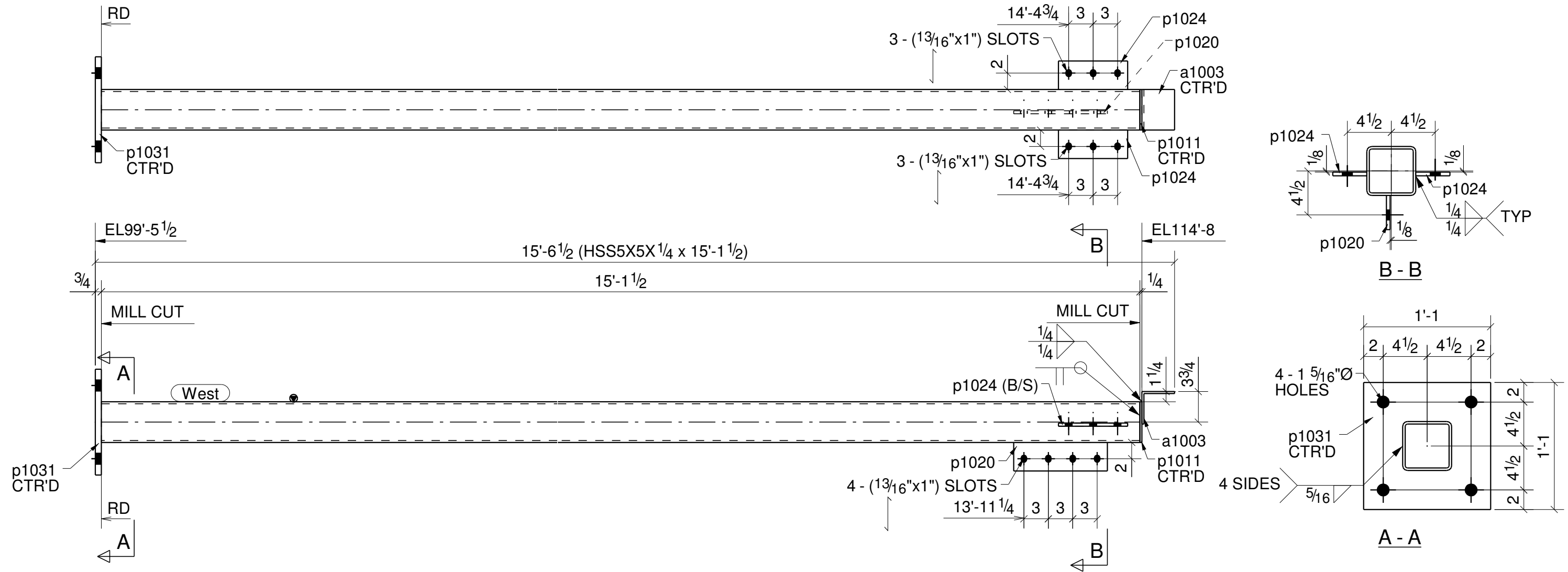
ONE - COLUMN - 1005

SURFACE PREPARATION : SSPC SP3

STEEL ASTM	A36	UNO
ELECTRODES	E70XX	UNO
WELDS	1/4" FILLET	UNO
OPEN HOLES	13/16Ø	UNO
BOLTS	A325N	UNO
PAINT	ONE COAT OF SHOP PRIMER	UNO

DATE	NO.	DESCRIPTION	BY

GRID LOCATION	BOTTOM ELEVATION
K/3	99'-5"1/2



BILL OF MATERIAL

Qty Ea.	Qty Tot	Piece Mark	Description	Length	Weight Total	Remarks	Adv Mill #	Steel Grade
	1	1002	COLUMN					
1	1		HSS5X5X1/4	15'-1 1/2"	221	SQ-2		A500-GR.C
1	1	a1003	L4X4X1/4	0'-5"	3			A36
1	1	p1011	PL1/4"X5"	0'-5"	2			A36
1	1	p1020	PL3/8"X3 1/2"	0'-11 1/2"	4			A36
2	2	p1024	PL3/8"X3 1/2"	0'-8 1/2"	6			A36
1	1	p1031	PL3/4"X13"	1'-1"	36			A36

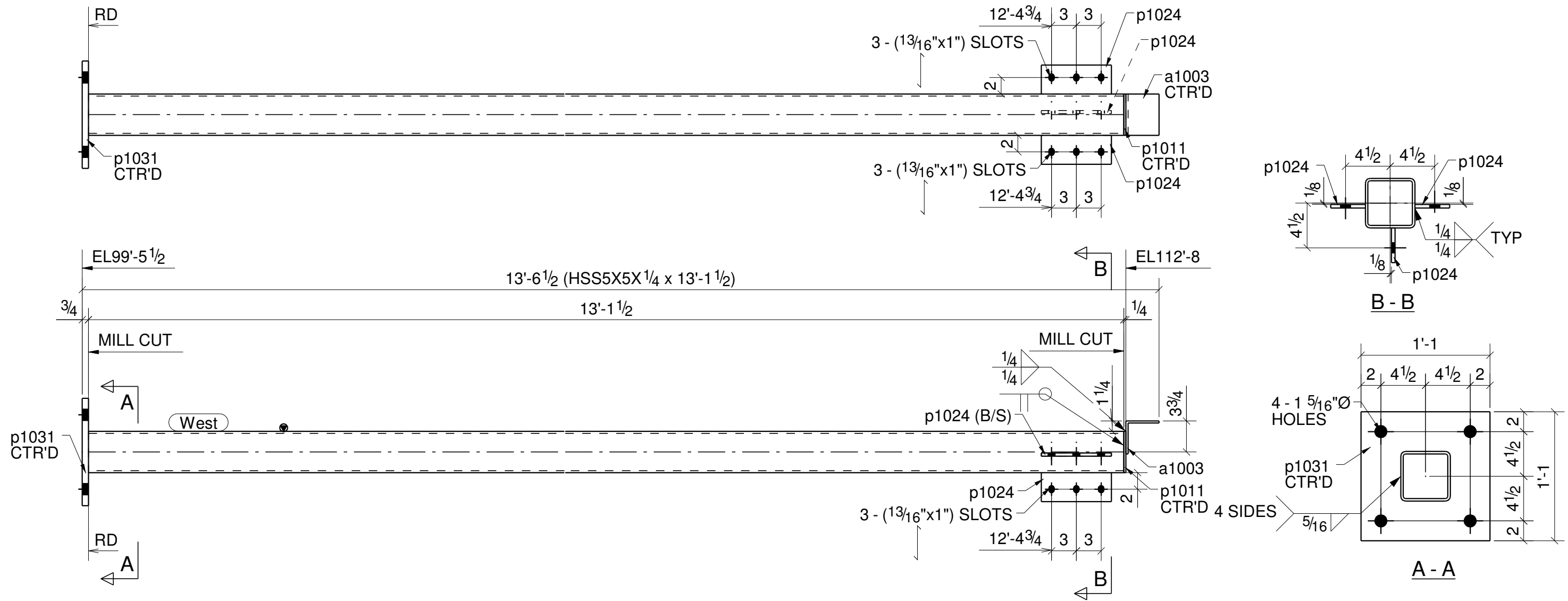
ONE - COLUMN - 1002

SURFACE PREPARATION : SSPC SP3

STEEL ASTM	A36	UNO
ELECTRODES	E70XX	UNO
WELDS	1/4" FILLET	UNO
OPEN HOLES	13/16Ø	UNO
BOLTS	A325N	UNO
PAINT	ONE COAT OF SHOP PRIMER	UNO

DATE	NO.	DESCRIPTION	BY

GRID LOCATION	BOTTOM ELEVATION
K/5	99'-5"1/2



ONE - COLUMN - 1004

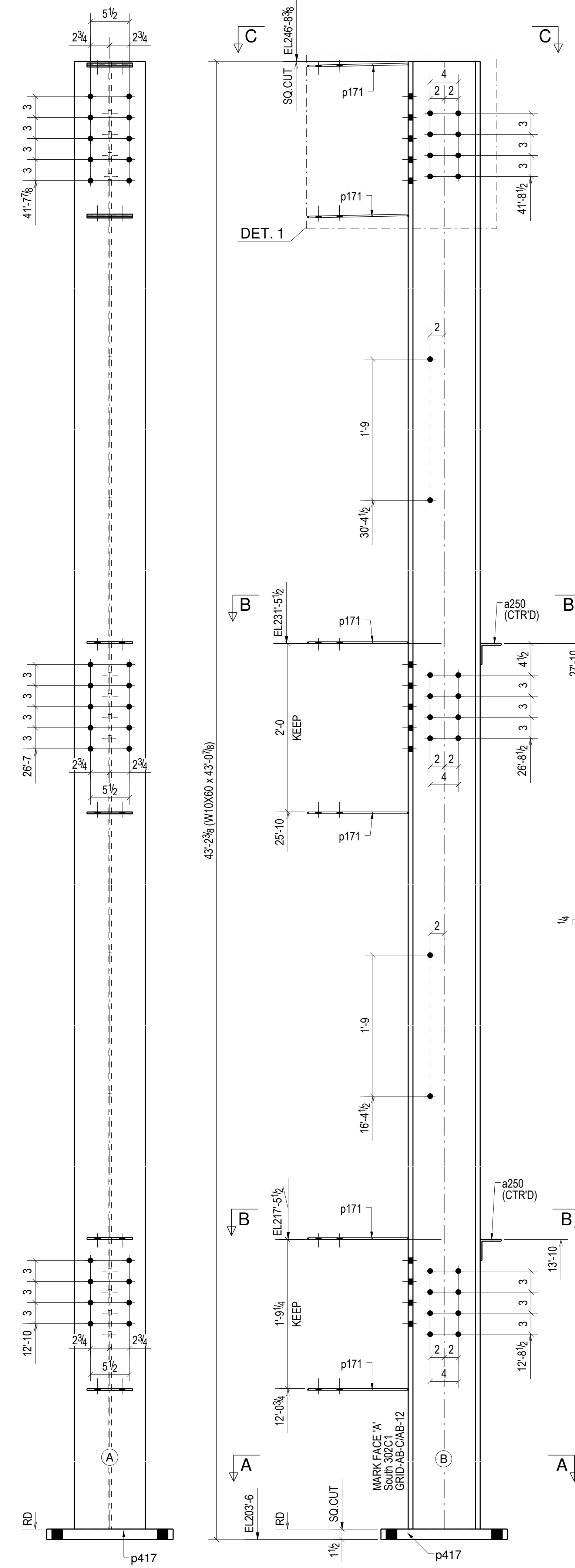
BILL OF MATERIAL								
Qty Ea.	Qty Tot	Piece Mark	Description	Length	Weight Total	Remarks	Adv Mill #	Steel Grade
	1	1004	COLUMN					
1	1		HSS5X5X1/4	13'-1 1/2"	192	SQ.2		A500-GR.C
1	1	a1003	L4X4X1/4	0'-5"	3			A36
1	1	p1011	PL1/4"X5"	0'-5"	2			A36
3	3	p1024	PL3/8"X3 1/2"	0'-8 1/2"	9			A36
1	1	p1031	PL3/4"X13"	1'-1"	36			A36

SURFACE PREPARATION : SSPC SP3		
STEEL ASTM	A36	UNO
ELECTRODES	E70XX	UNO
WELDS	1/4" FILLET	UNO
OPEN HOLES	13/16Ø	UNO
BOLTS	A325N	UNO
PAINT	ONE COAT OF SHOP PRIMER	UNO

DATE	NO.	DESCRIPTION	BY

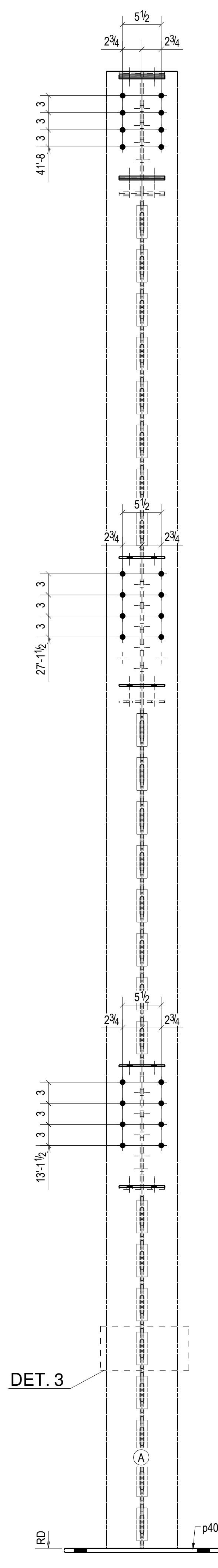
BILL OF MATERIAL

SHIP MARK	PIECE MARK	QTY	DESCRIPTION	LENGTH	REMARKS
302C1		1	W10X60	43'-0 7/8"	A992 UNPAINTED
	a250	2	L3X3X1/4	0'-6"	A36
	p171	6	PL1/4"X6 1/2"	1'-2 1/4"	A572-50
	p417	1	PL1 1/2"X18"	1'-6"	A572-50
302C2		1	W10X68	42'-10 1/4"	A992 UNPAINTED
	p171	12	PL1/4"X6 1/2"	1'-2 1/4"	A572-50
	p402	1	PL2"X22"	1'-10"	A572-50
	1	24	H&B#359FP	BOI	GALVANIZED



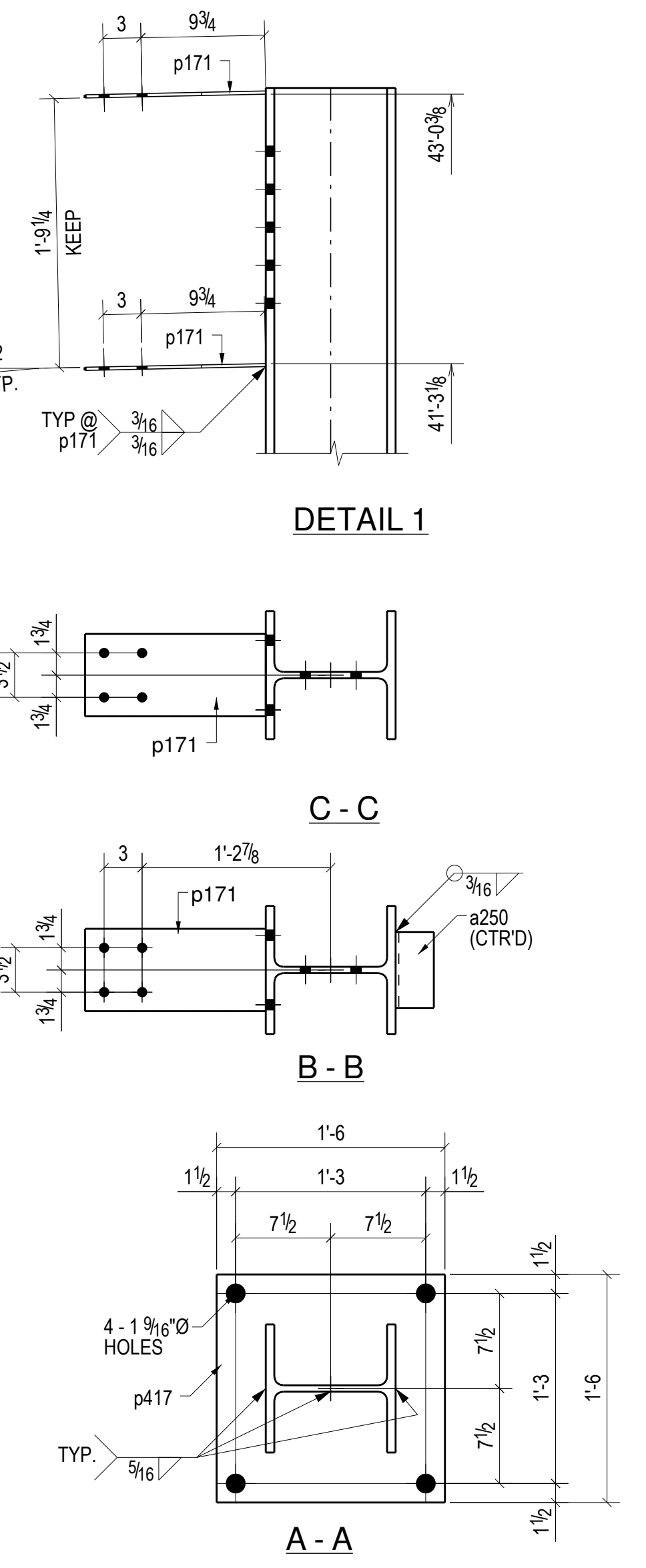
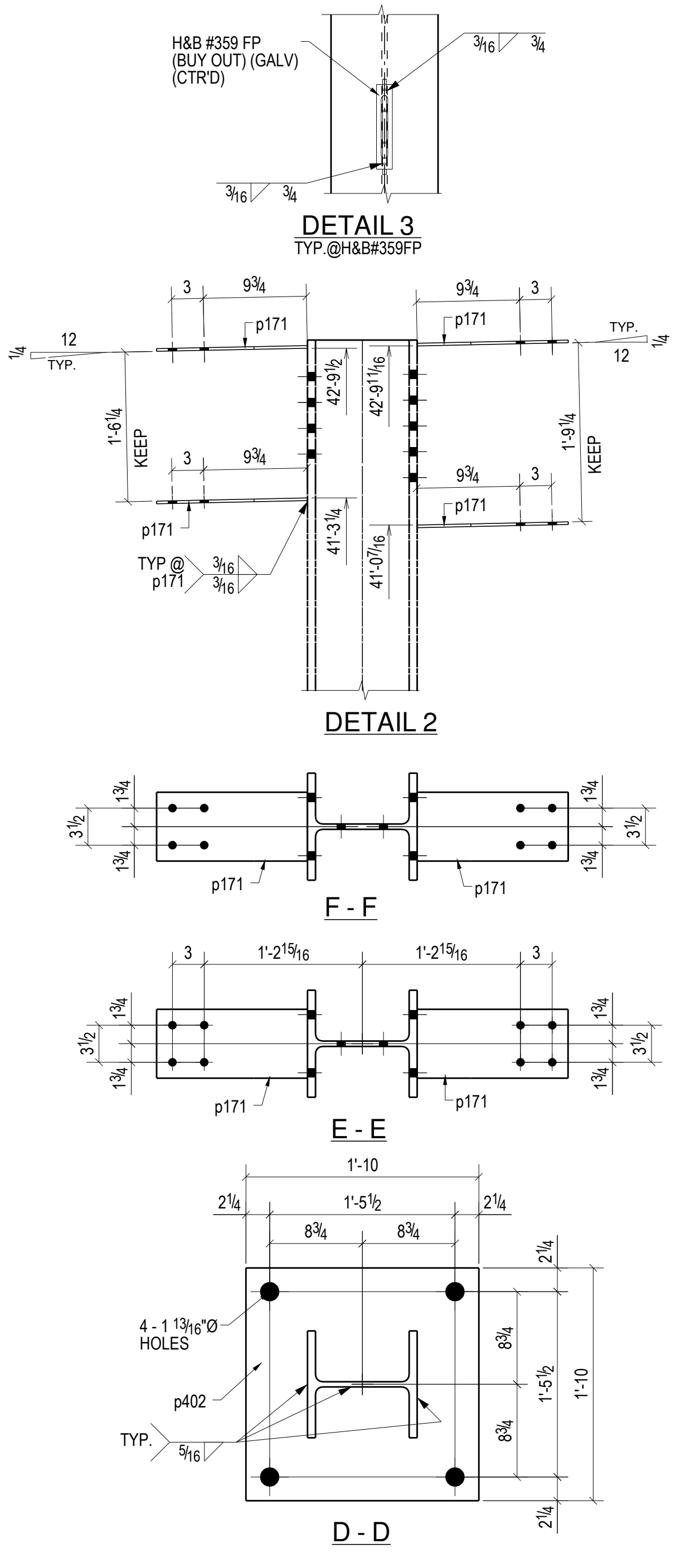
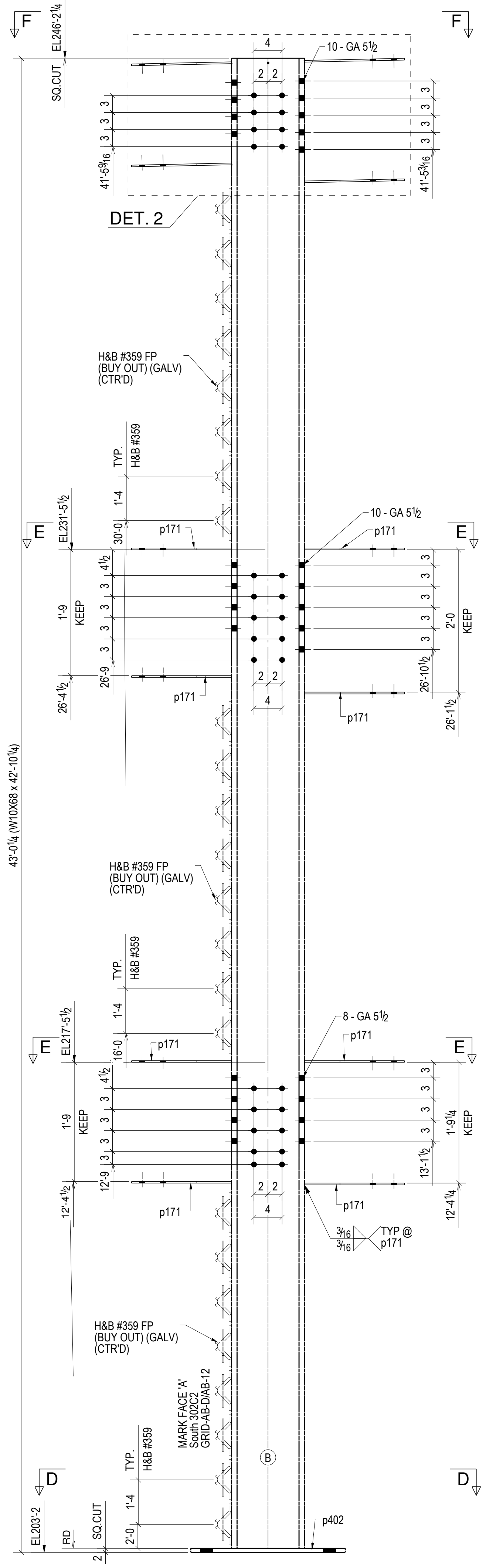
ONE - COLUMN - 302C1 UNPAINTED

W 10 1/4" x 7 1/8"
F 10 1/8" x 11 1/16"



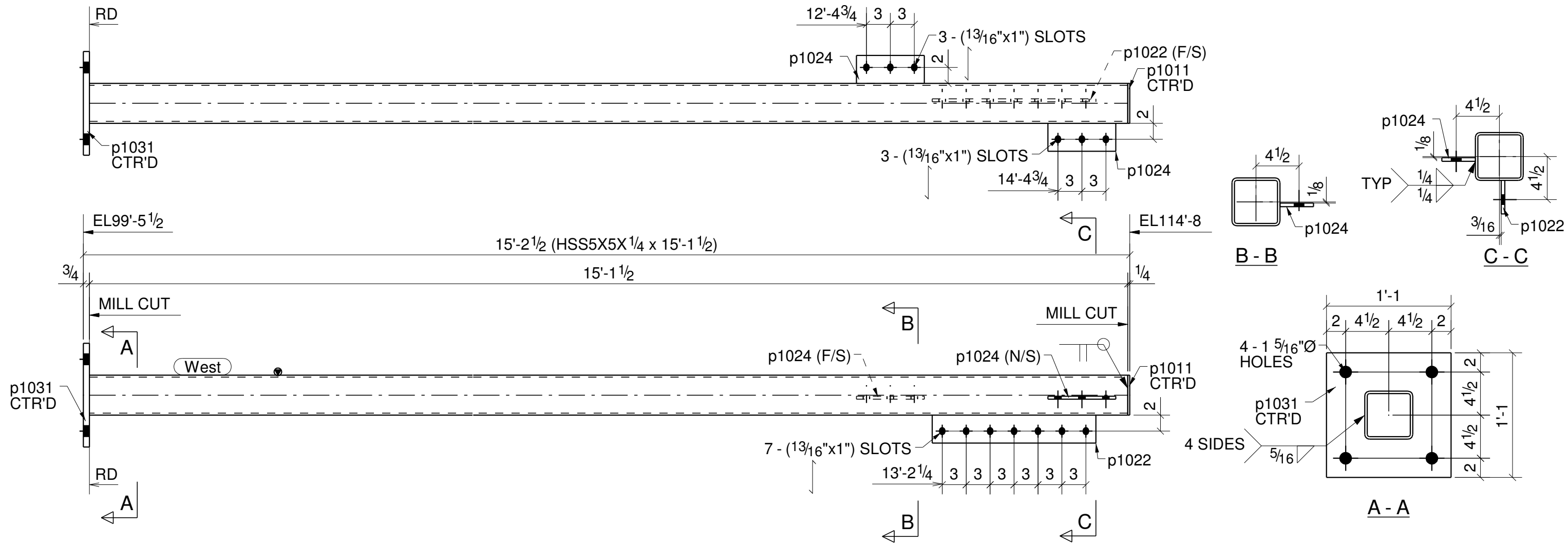
ONE - COLUMN - 302C2 UNPAINTED

W 10 3/8" x 1 1/2"
F 10 1/8" x 3 3/4"



REV.	DATE	DESCRIPTION	BY	CHKD BY
OPEN HOLES	13/16 UNO			
PAINT AS NOTED IN B.O.M				
ARCHITECT ENGINEER				
PROJECT NAME				
LOCATION				
CONTRACTOR				
DESCRIPTION COLUMN DETAILS				
DRAWN BY				
CHECKED BY				
APPROVED BY				

GRID LOCATION	BOTTOM ELEVATION
K/4.2	99'-5"1/2



ONE - COLUMN - 1003

BILL OF MATERIAL								
Qty Ea.	Qty Tot	Piece Mark	Description	Length	Weight Total	Remarks	Adv Mill #	Steel Grade
	1	1003	COLUMN					
1	1		HSS5X5X1/4	15'-1 1/2"	221	SQ.2		A500-GR.C
1	1	p1011	PL1/4"X5"	0'-5"	2			A36
1	1	p1022	PL3/8"X3 1/2"	1'-8 1/2"	8			A36
2	2	p1024	PL3/8"X3 1/2"	0'-8 1/2"	6			A36
1	1	p1031	PL3/4"X13"	1'-1"	36			A36

SURFACE PREPARATION : SSPC SP3

STEEL ASTM	A36	UNO
ELECTRODES	E70XX	UNO
WELDS	1/4" FILLET	UNO
OPEN HOLES	13/16Ø	UNO
BOLTS	A325N	UNO
PAINT	ONE COAT OF SHOP PRIMER	UNO

DATE	NO.	DESCRIPTION	BY