

APPROVAL/REVIEW AUTHORITY:
PLEASE REVIEW THIS DRAWING CAREFULLY.
IT REPRESENTS OUR INTERPRETATION OF THE INTENT OF THE CONTRACT DOCUMENTS. HOWEVER, THE STEEL FABRICATOR AND THE STRUCTURAL STEEL DETAILER ASSUME NO RESPONSIBILITY FOR THE ACCURACY OF THE INFORMATION SHOWN ON THIS DRAWING. THIS IS THE RESPONSIBILITY OF THE BUYER.

IT WILL BE ASSUMED THAT ALL INFORMATION SHOWN HEREIN HAS THE AFFIRMATION OF THE APPROVAL AUTHORITY UNLESS NOTED TO THE CONTRARY ON THIS DRAWING WHEN IT IS RETURNED FROM APPROVAL.

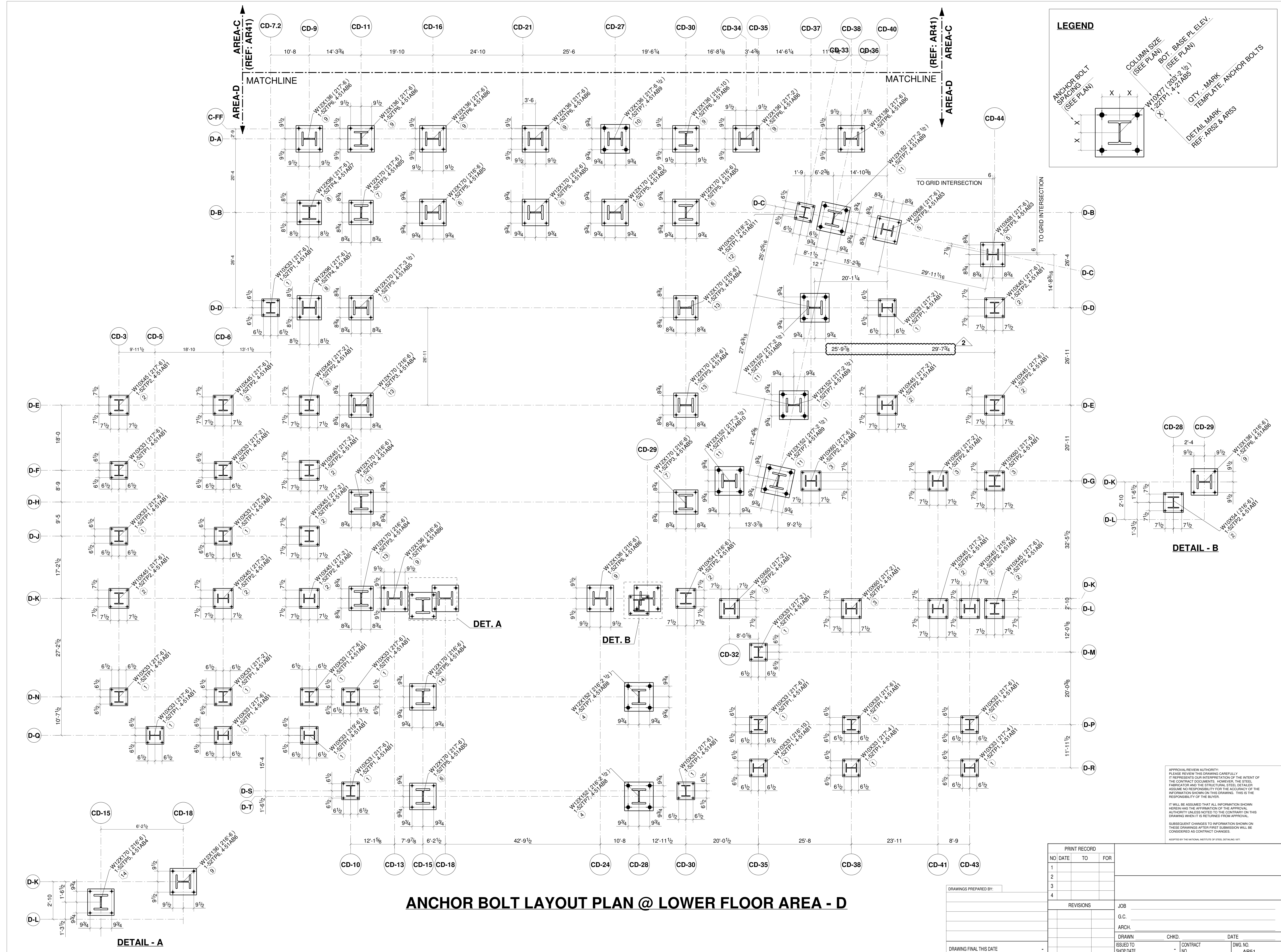
SUBSEQUENT CHANGES TO INFORMATION SHOWN ON THESE DRAWINGS AFTER FIRST SUBMISSION WILL BE CONSIDERED AS CONTRACT CHANGES.

ADOPTED BY THE NATIONAL INSTITUTE OF STEEL BUILDING 1977.

ANCHOR BOLT LAYOUT PLAN @ LOWER FLOOR AREA - C

PRINT RECORD			
NO.	DATE	TO	FOR
1			
2			
3			
4			

REVISIONS				JOB	
				G.C.	
				ARCH.	
				DRAWN	CHKD. DATE
				ISSUED TO	CONTRACT
				SHOP DATE	NO. DWG. NO.
DRAWING FINAL THIS DATE				AR41	



LEGEND

ANCHOR BOLT SPACING (SEE PLAN)

COLUMN SIZE (SEE PLAN)

BOT. BASE PL ELEV. (SEE PLAN)

W10X71 (205.2 1/2) 1.52TF1, 4.21AB5

QTY. - MARK

DETAIL MARK

REF. AREA & AP53

TEMPLATE, ANCHOR BOLTS

APPROVAL/REVIEW AUTHORITY:
PLEASE REVIEW THIS DRAWING CAREFULLY.
IT REPRESENTS OUR INTERPRETATION OF THE INTENT OF THE CONTRACT DOCUMENTS. HOWEVER, THE STEEL FABRICATOR AND THE STRUCTURAL STEEL DETAILER ASSUME NO RESPONSIBILITY FOR THE ACCURACY OF THE INFORMATION SHOWN ON THIS DRAWING. THIS IS THE RESPONSIBILITY OF THE BUYER.

IT WILL BE ASSUMED THAT ALL INFORMATION SHOWN HEREIN HAS THE AFFIRMATION OF THE APPROVAL AUTHORITY UNLESS NOTED TO THE CONTRARY ON THIS DRAWING WHEN IT IS RETURNED FROM APPROVAL.

SUBSEQUENT CHANGES TO INFORMATION SHOWN ON THESE DRAWINGS AFTER FIRST SUBMISSION WILL BE CONSIDERED AS CONTRACT CHANGES.

ADOPTED BY THE NATIONAL INSTITUTE OF STEEL DESIGNING 1977.

PRINT RECORD			
NO.	DATE	TO	FOR
1			
2			
3			
4			

REVISIONS		JOB
		G.C.
		ARCH.
		DRAWN
		CHKD.
		DATE

ISSUED TO	CONTRACT NO.	DWG. NO.
SHOP DATE		AR51

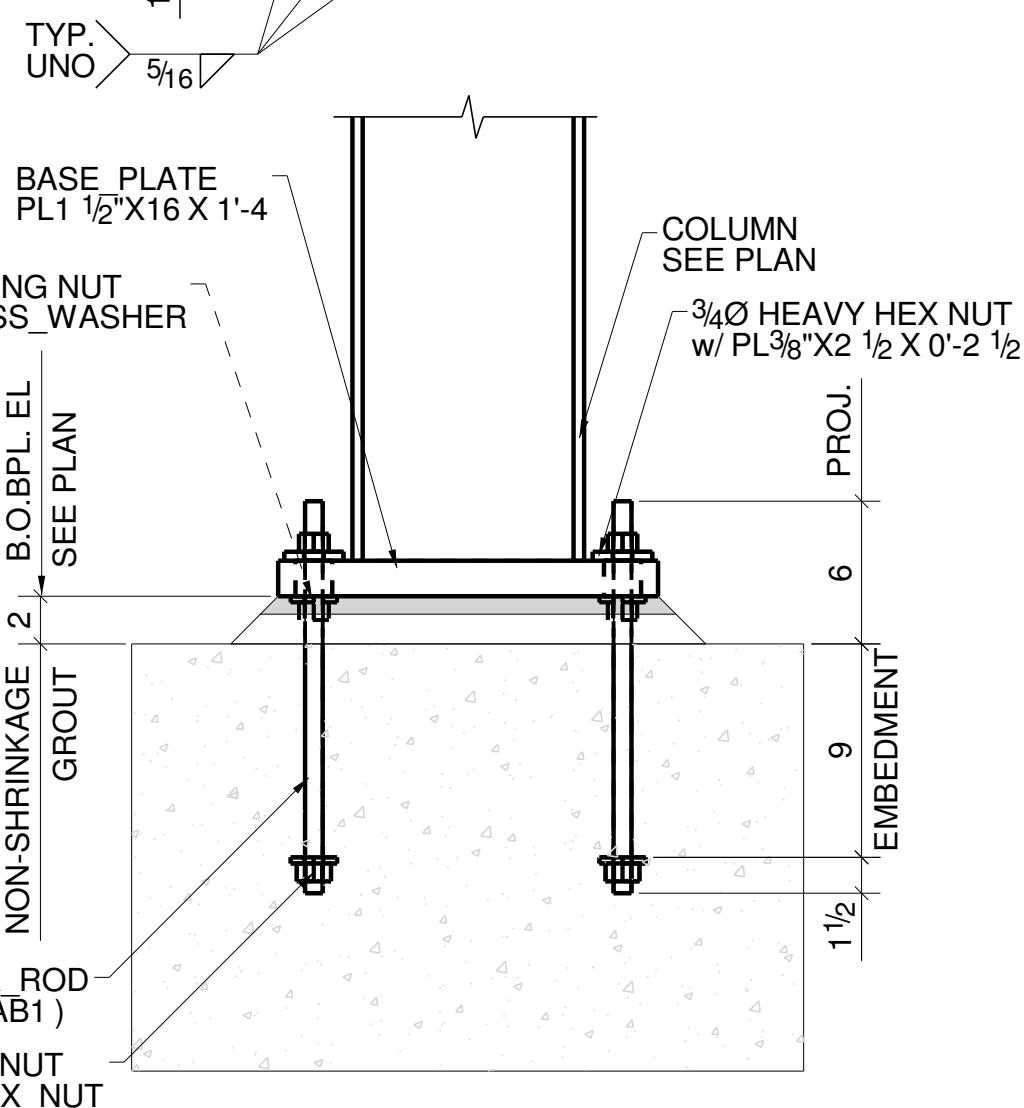
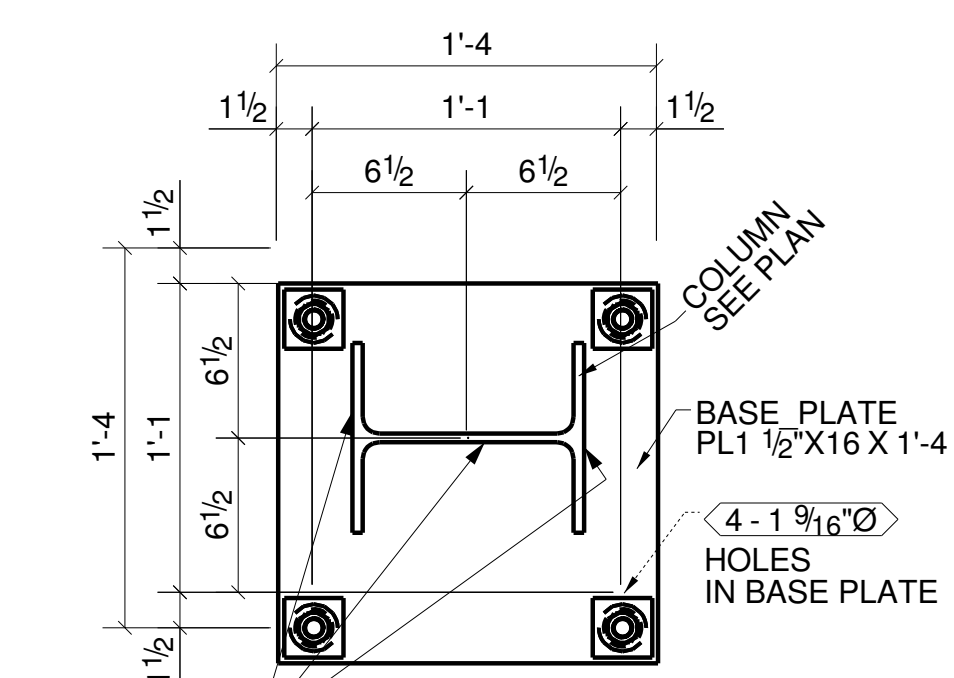
ANCHOR BOLT LAYOUT PLAN @ LOWER FLOOR AREA - D

DRAWINGS PREPARED BY:

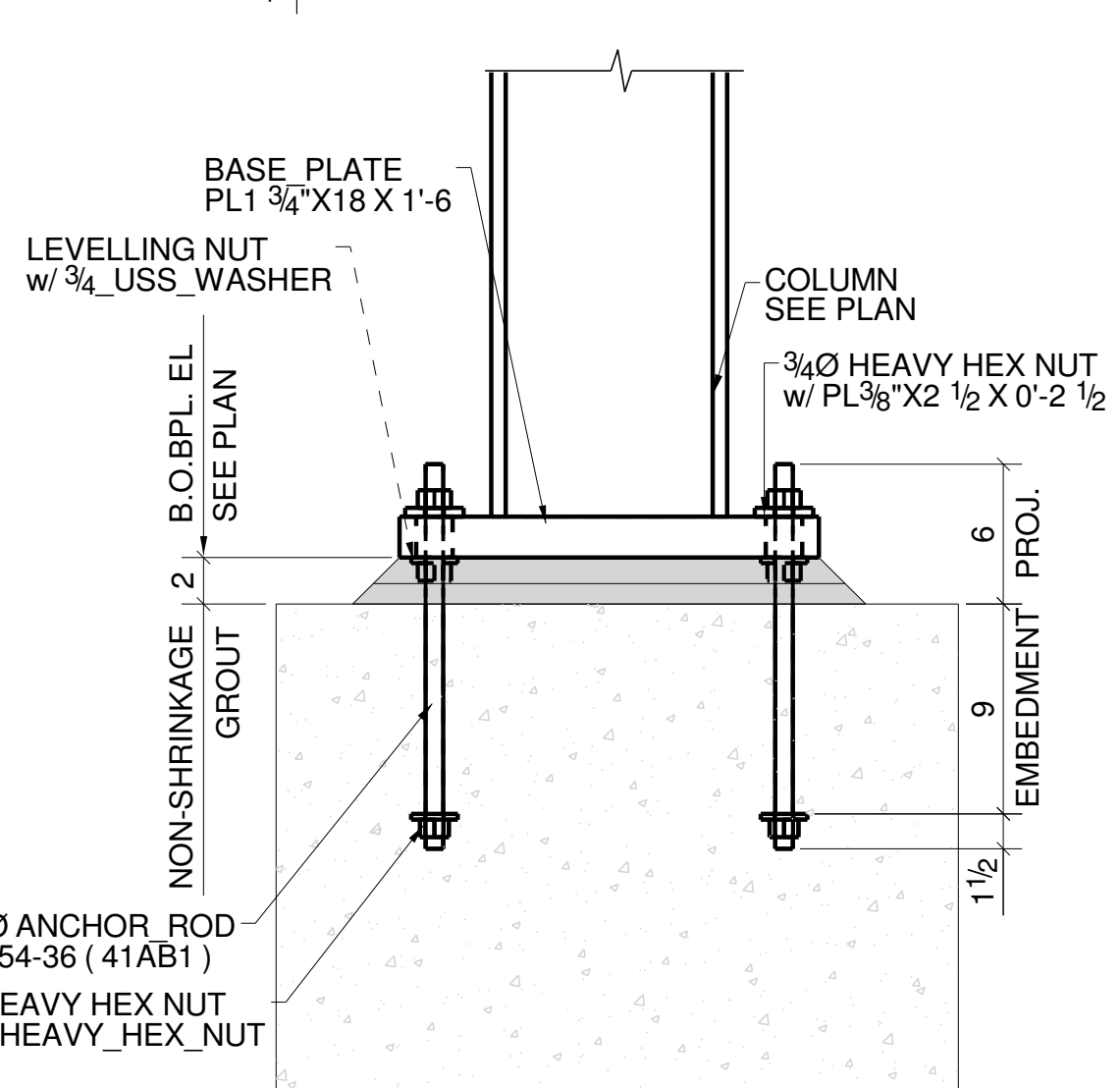
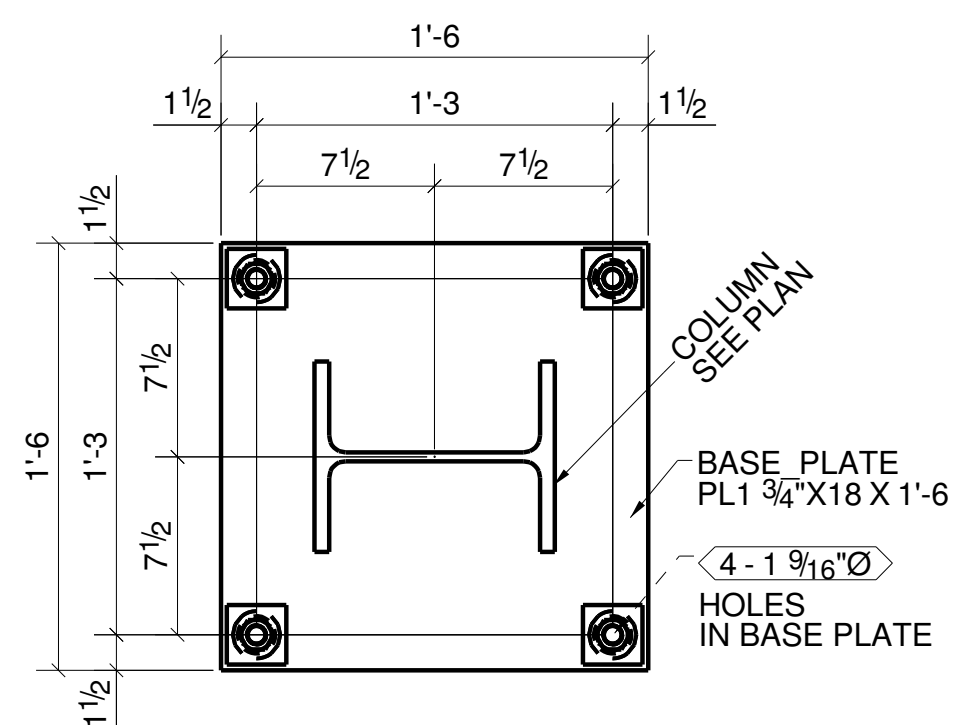
DRAWING FINAL THIS DATE

DETAIL - A

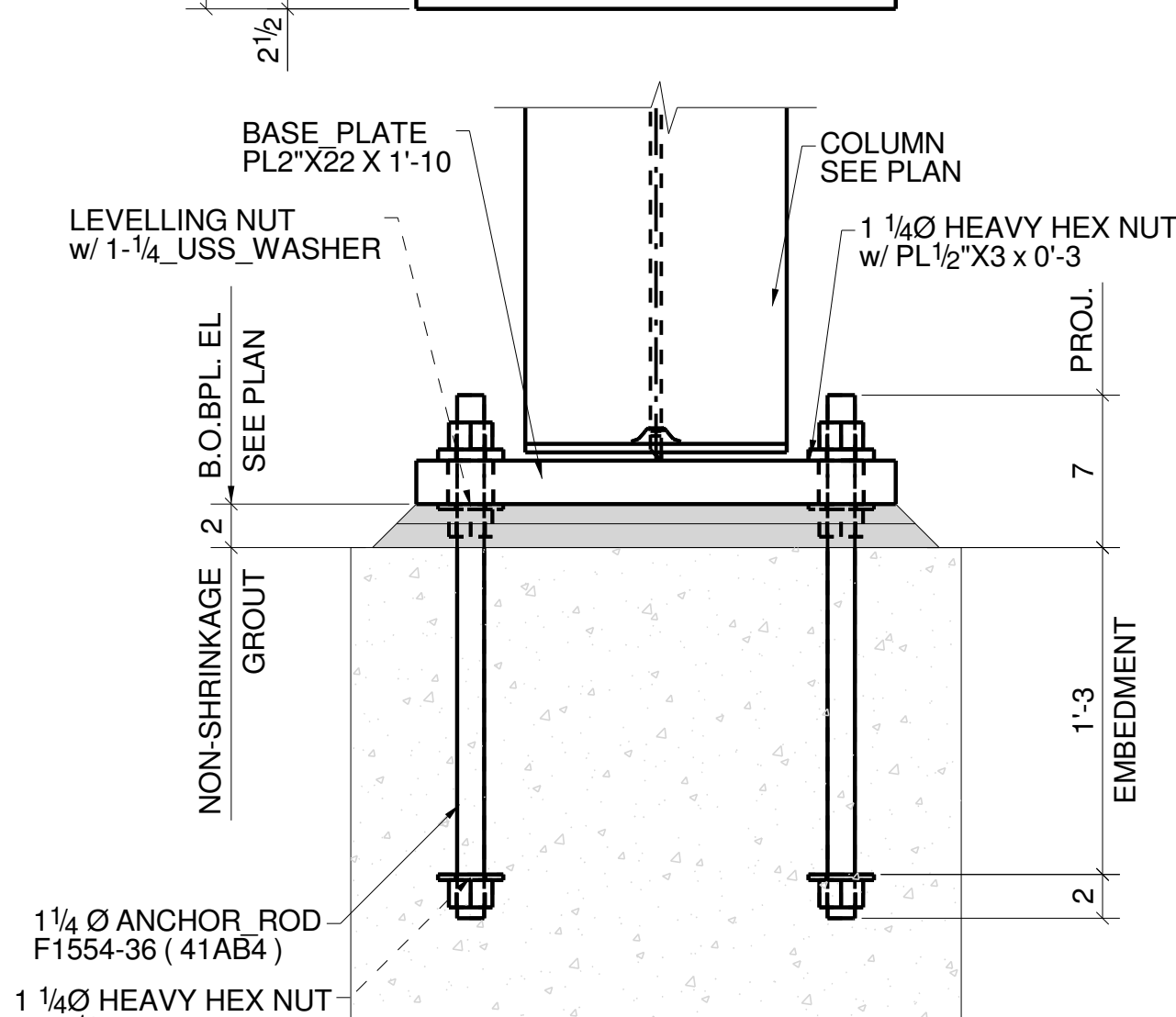
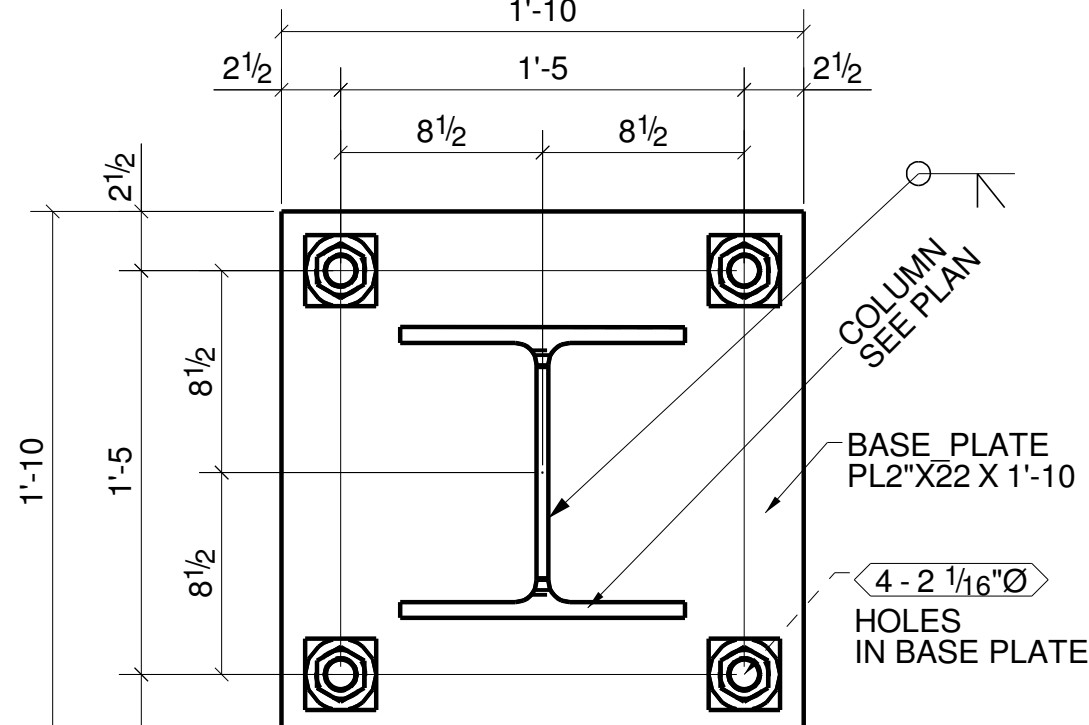
DETAIL - B



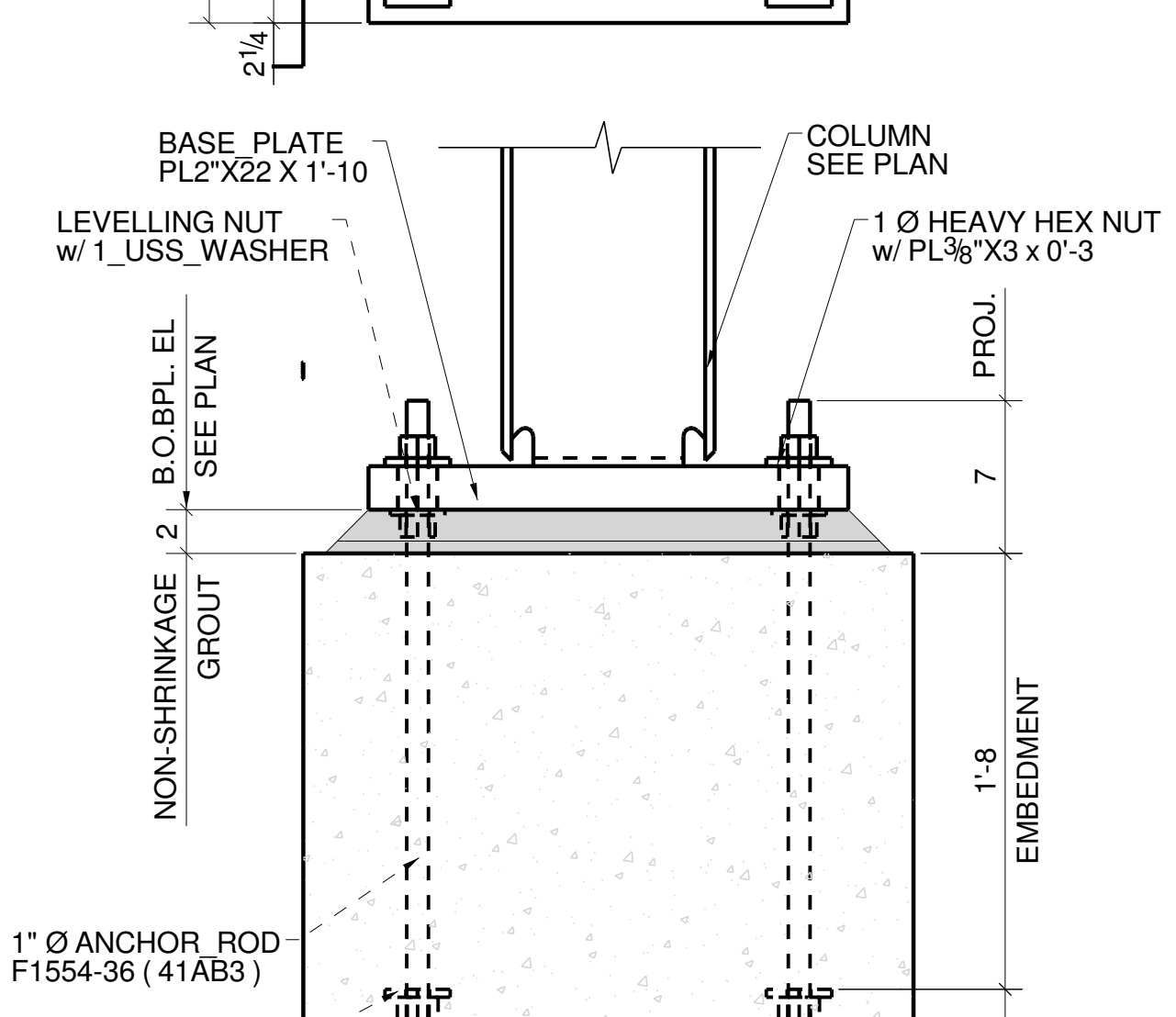
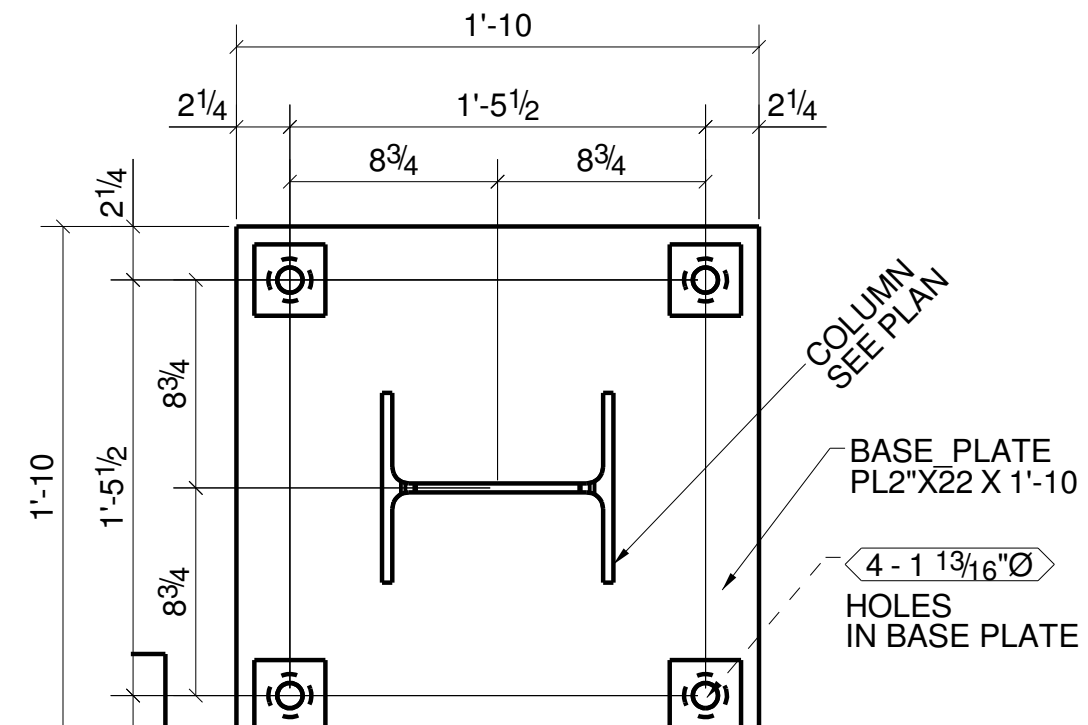
DETAIL - 1
(18 LOCATIONS)



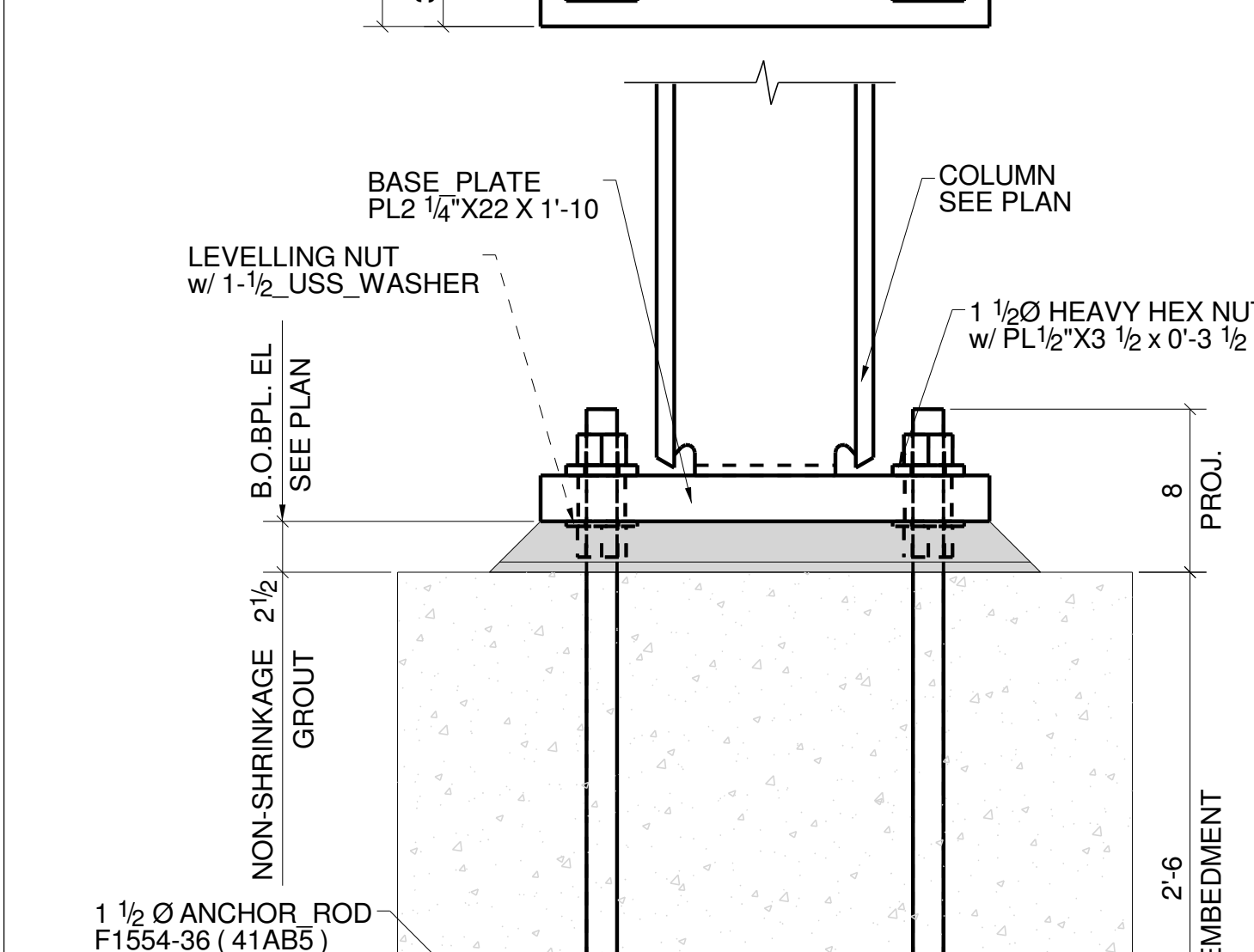
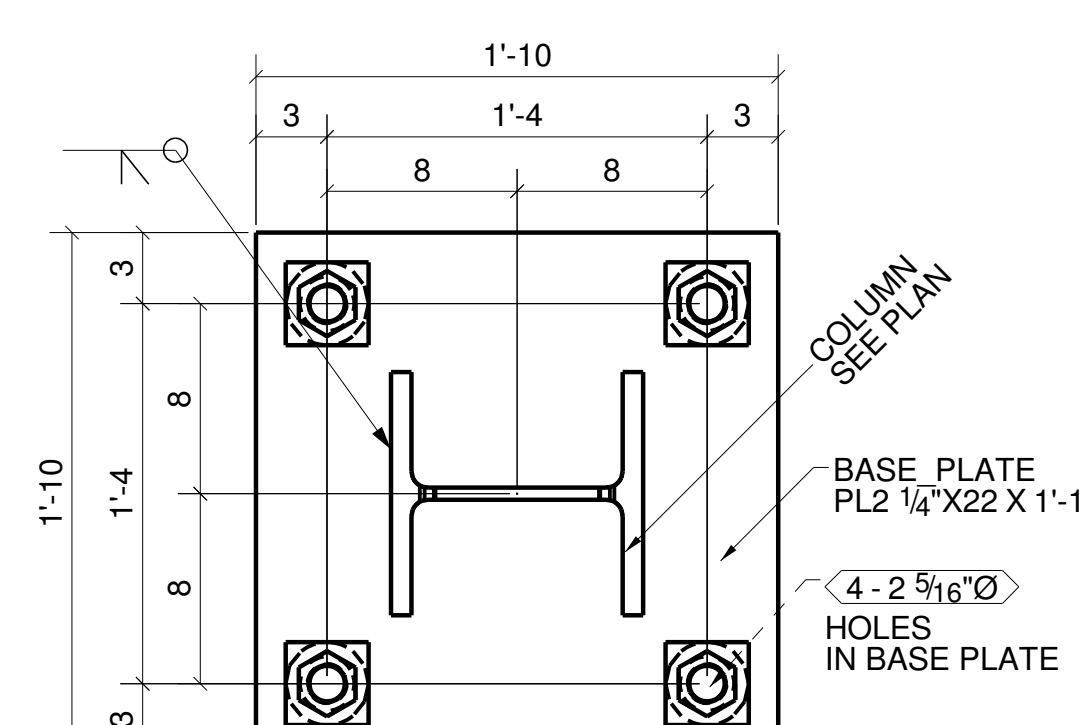
DETAIL - 2
(10 LOCATIONS)



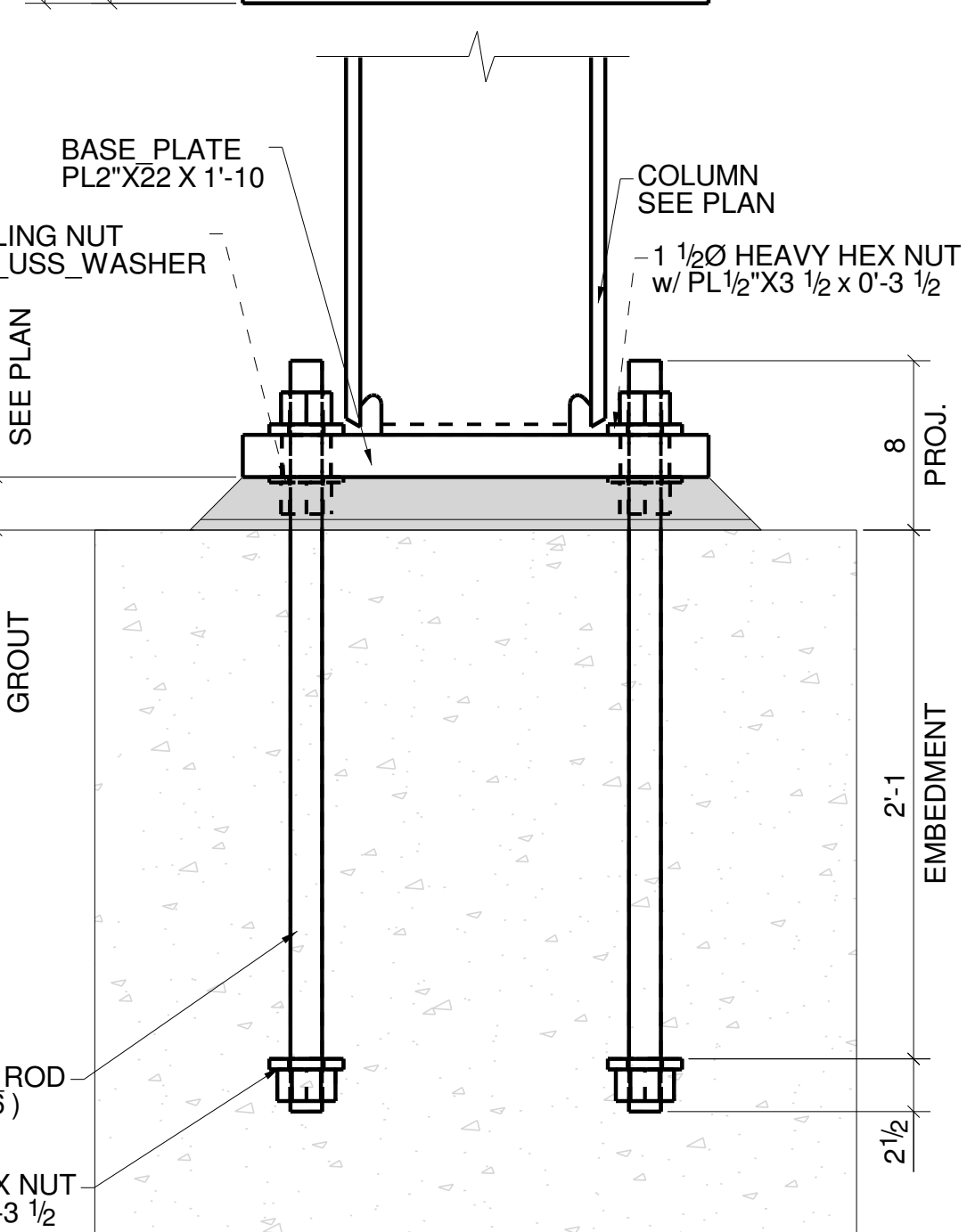
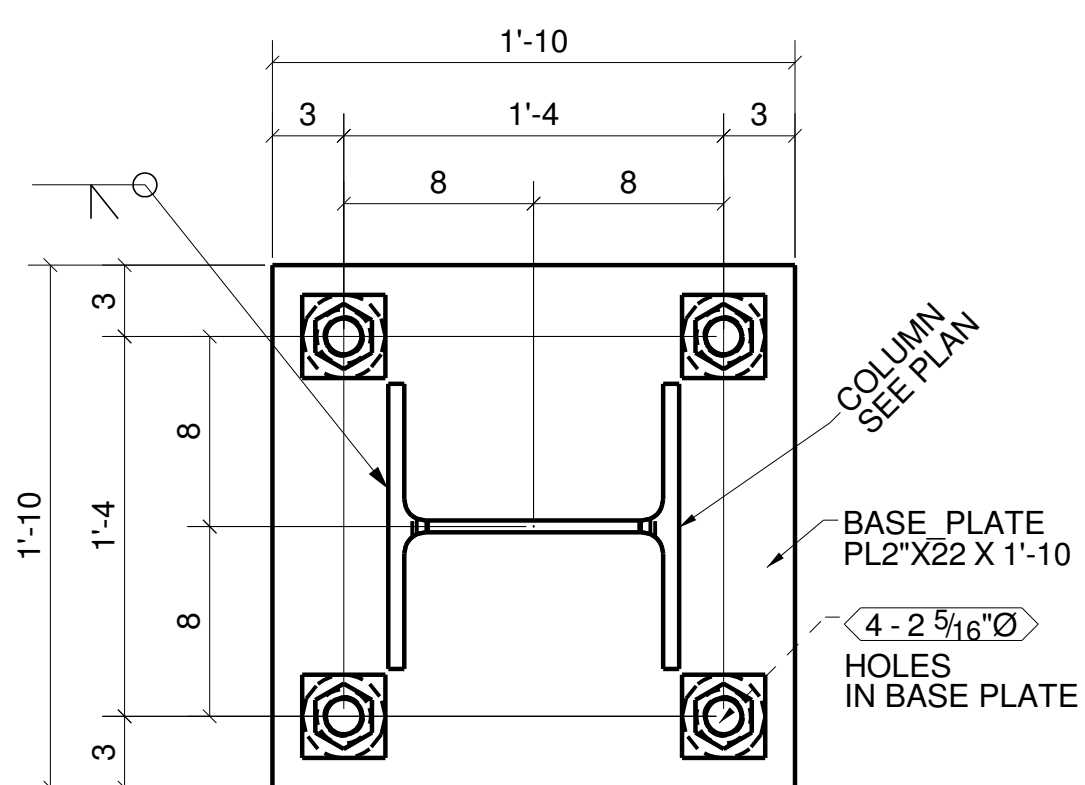
DETAIL - 3
(15 LOCATIONS)



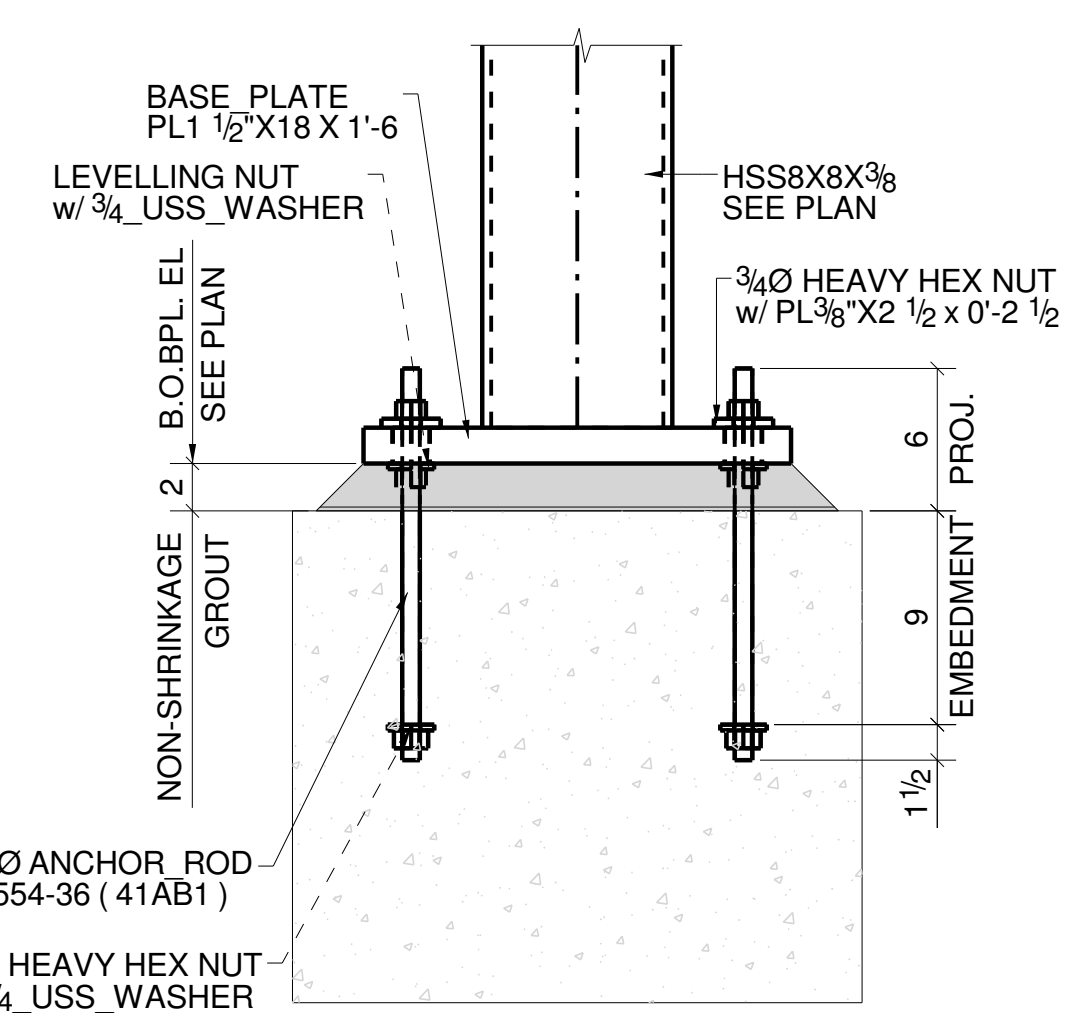
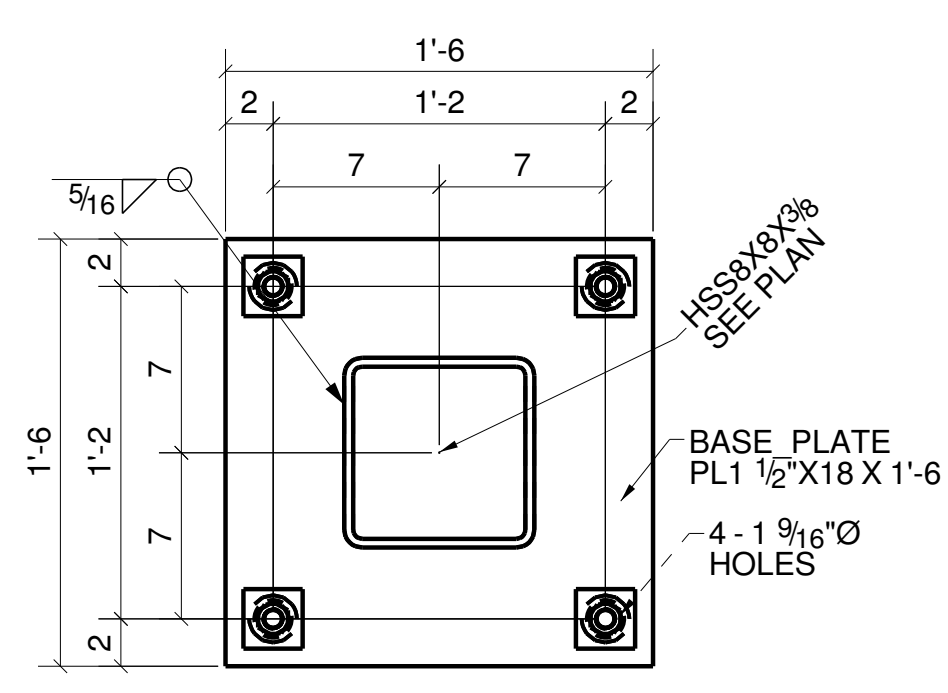
DETAIL - 4
(13 LOCATIONS)



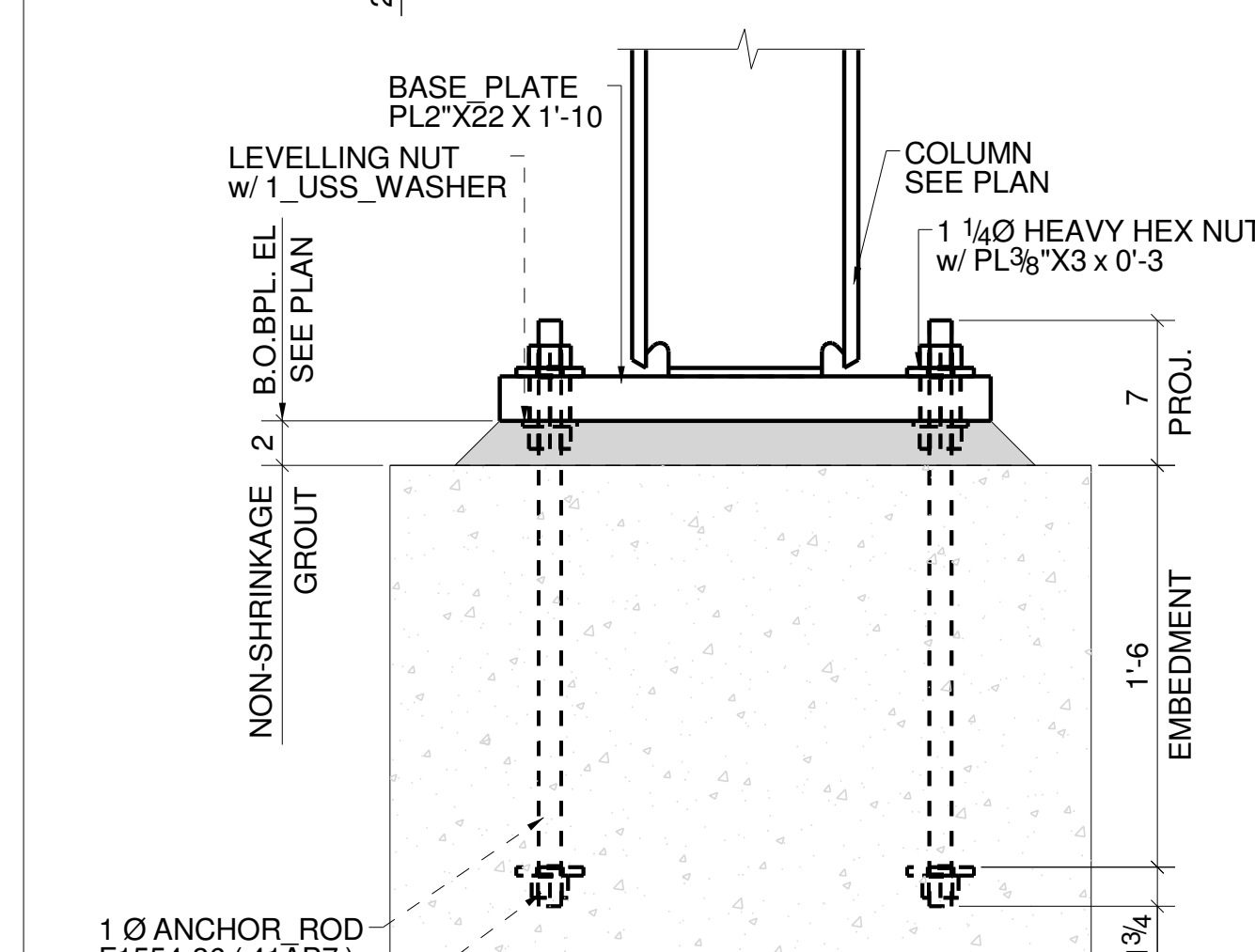
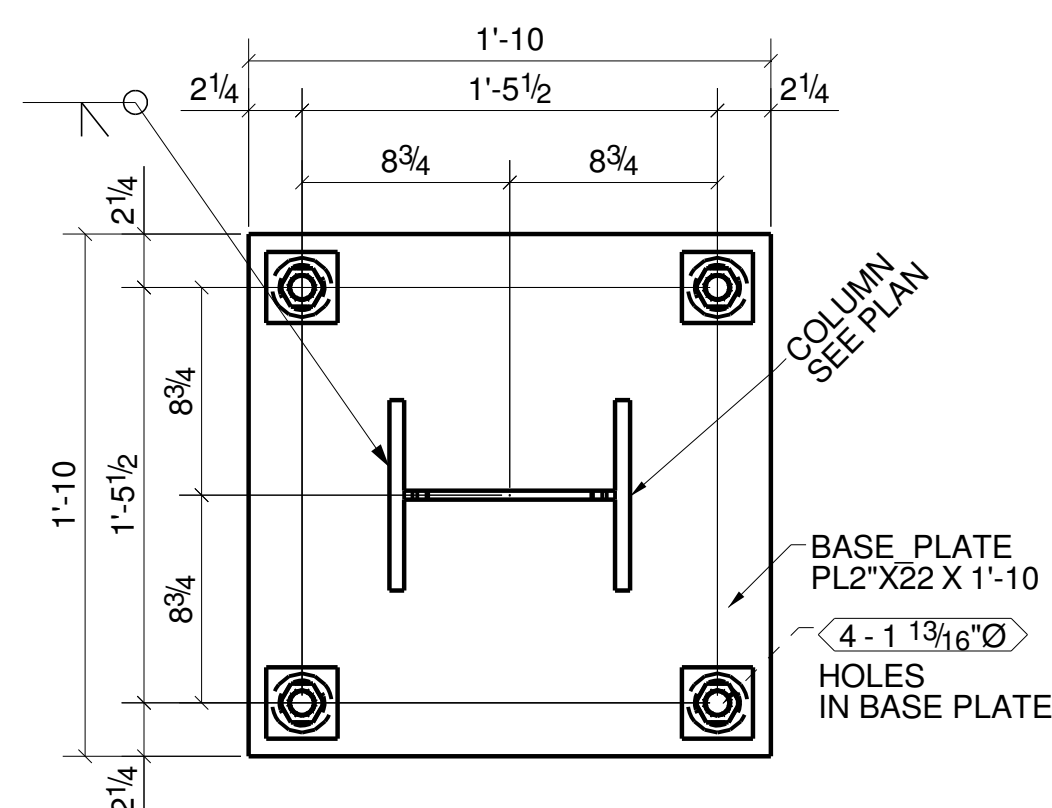
DETAIL - 5
(5 LOCATIONS)



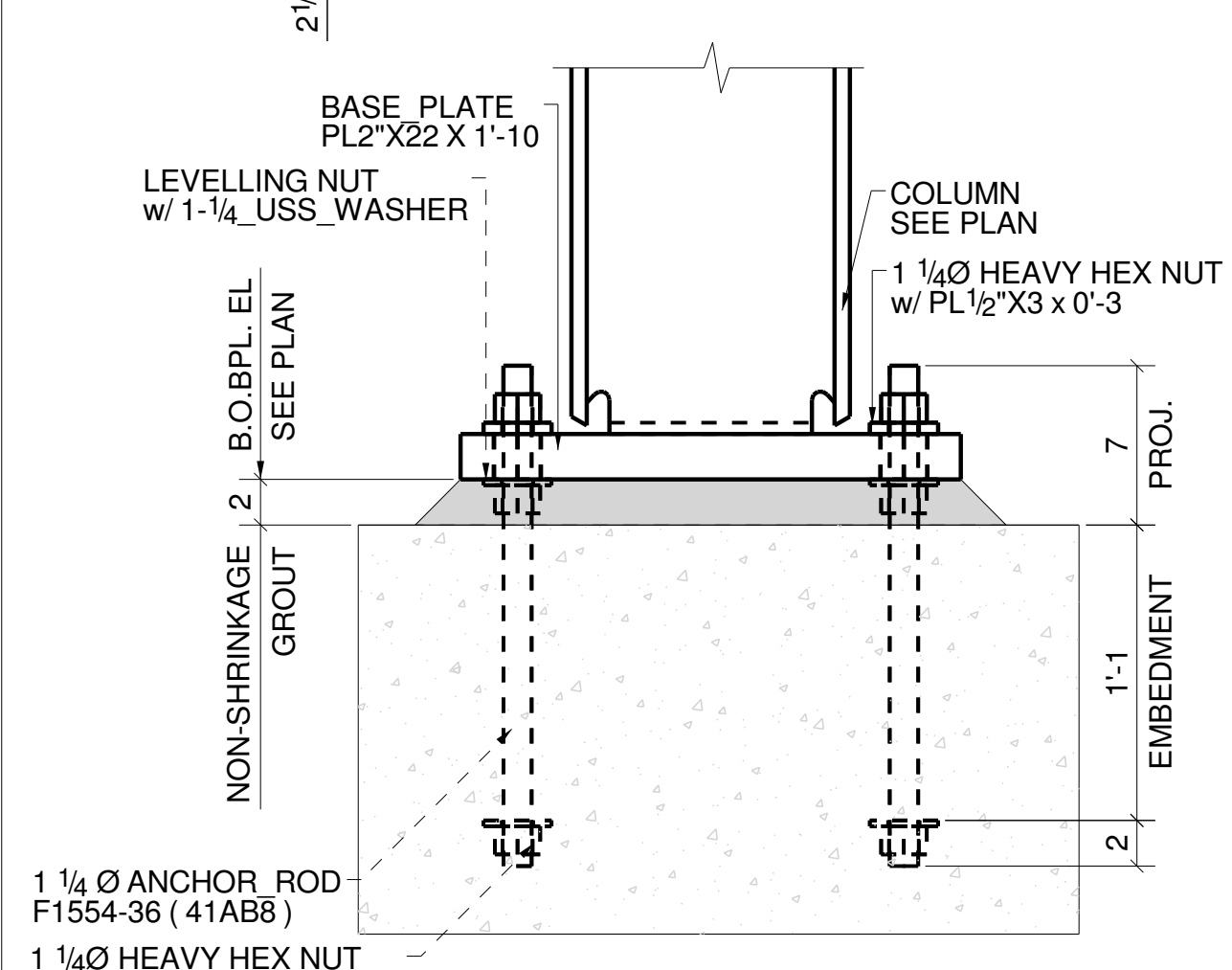
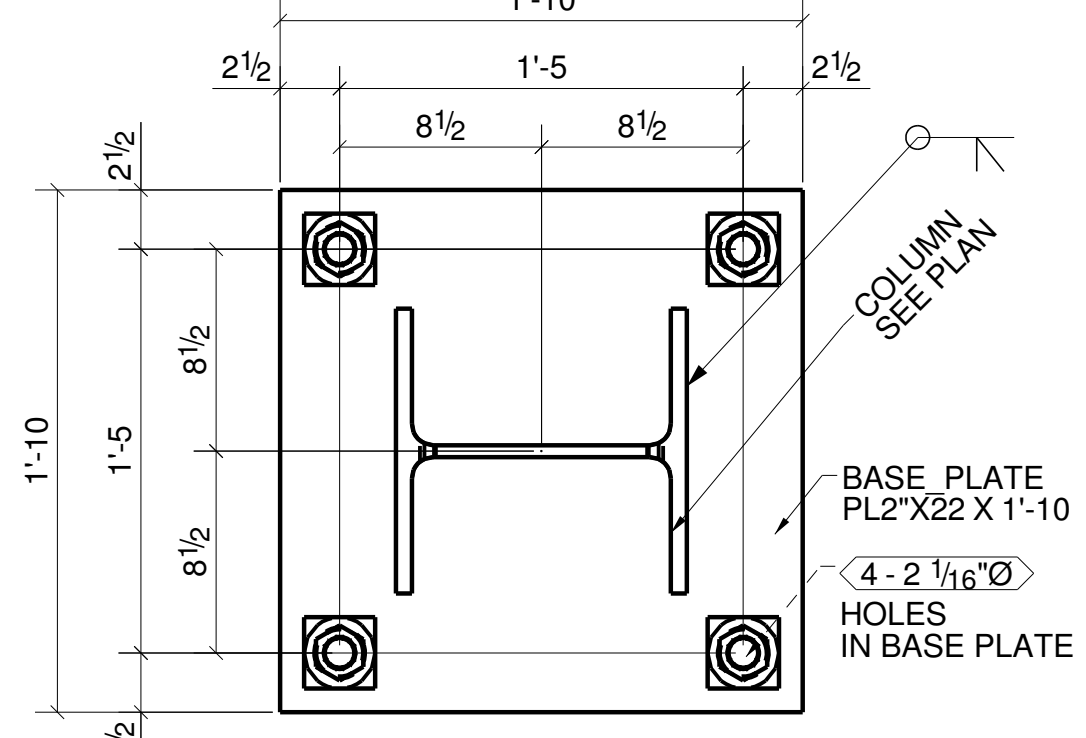
DETAIL - 6
(5 LOCATIONS)



DETAIL - 7
(5 LOCATIONS)



DETAIL - 8
(8 LOCATIONS)



DETAIL - 9
(3 LOCATIONS)

APPROVAL REVIEW AUTHORITY:
PLEASE REVIEW THIS DRAWING CAREFULLY.
IT REPRESENTS OUR INTERPRETATION OF THE INTENT OF
THE CONTRACT DOCUMENTS. HOWEVER, THE STEEL
FABRICATOR AND THE STRUCTURAL STEEL DETAILER
ASSUME NO RESPONSIBILITY FOR THE ACCURACY OF THE
INFORMATION SHOWN ON THIS DRAWING. THIS IS THE
RESPONSIBILITY OF THE BUYER.
IT WILL BE ASSUMED THAT ALL INFORMATION SHOWN
HEREIN HAS THE AFFIRMATION OF THE APPROVAL
AUTHORITY UNLESS NOTED TO THE CONTRARY ON THIS
DRAWING WHEN IT IS RETURNED FROM APPROVAL.
SUBSEQUENT CHANGES TO INFORMATION SHOWN ON
THESE DRAWINGS AFTER FIRST SUBMISSION WILL BE
CONSIDERED AS CONTRACT CHANGES.
ADOPTED BY THE NATIONAL INSTITUTE OF STEEL DETAILING 1977.

DRAWINGS PREPARED BY:

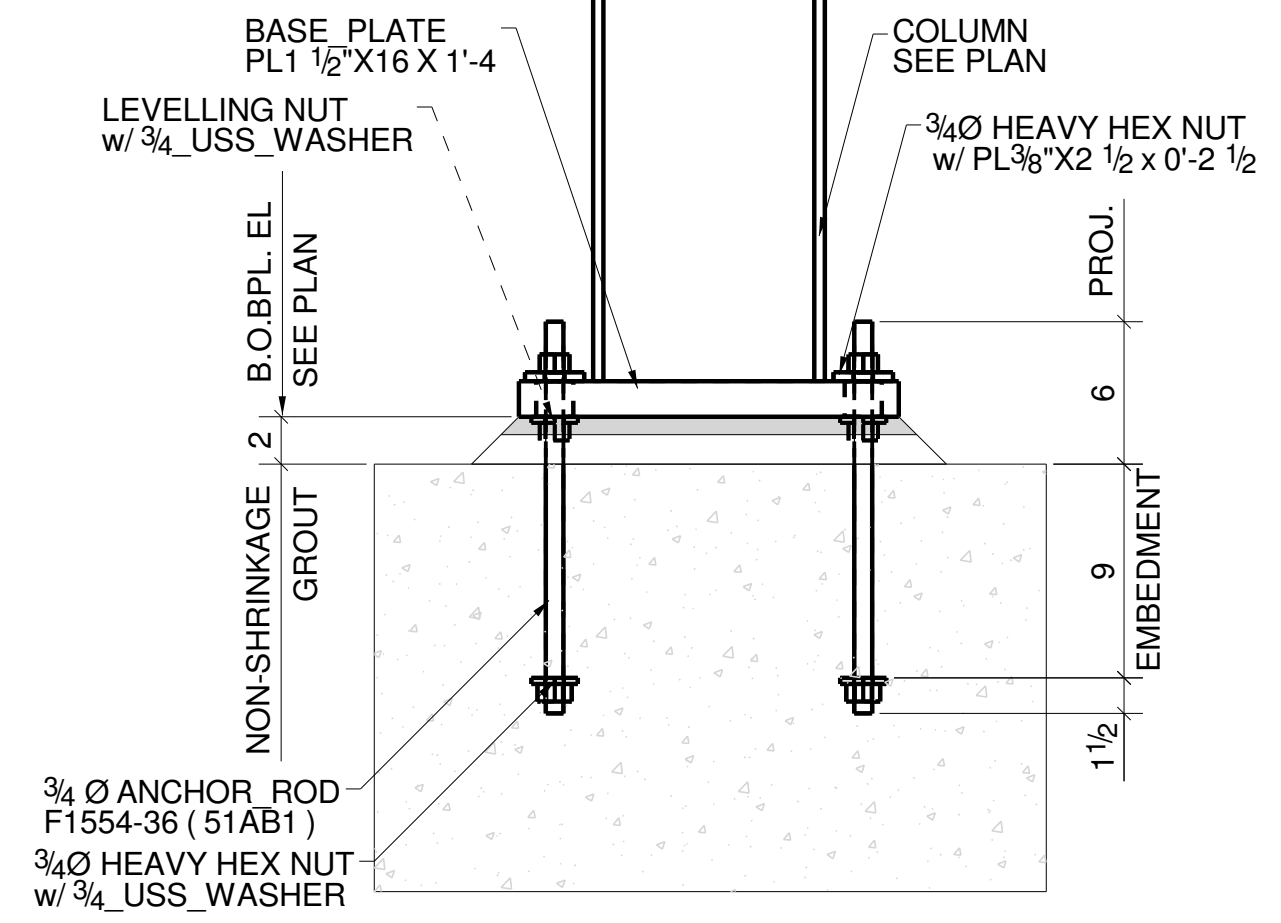
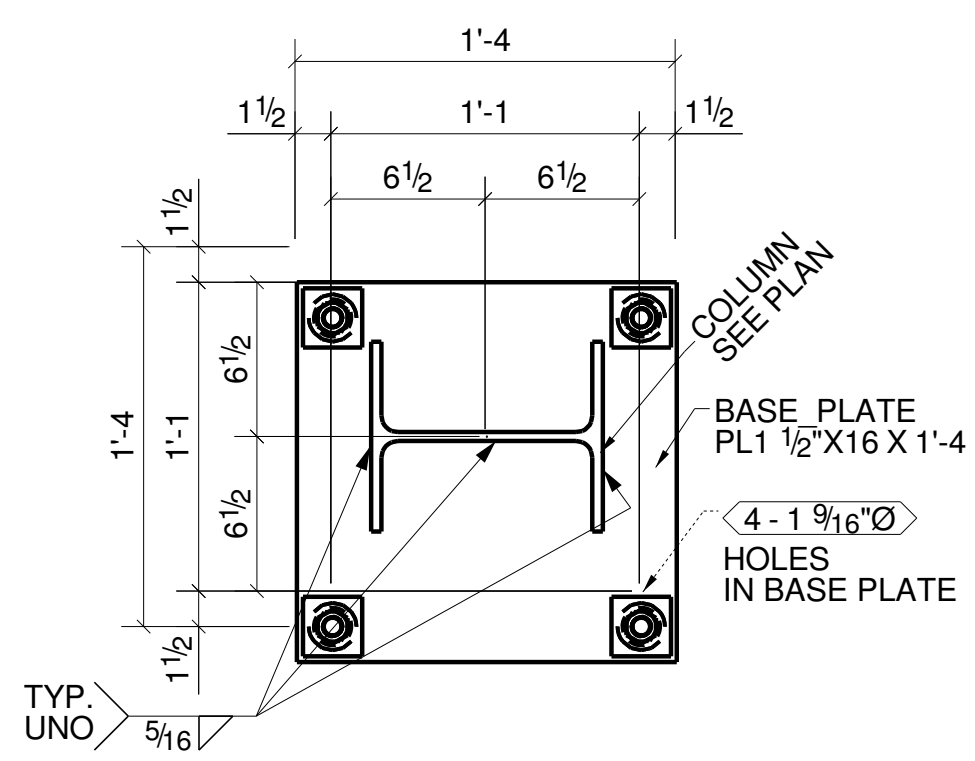
DRAWING FINAL THIS DATE

PRINT RECORD			
NO.	DATE	TO	FOR
1			
2			
3			
4			

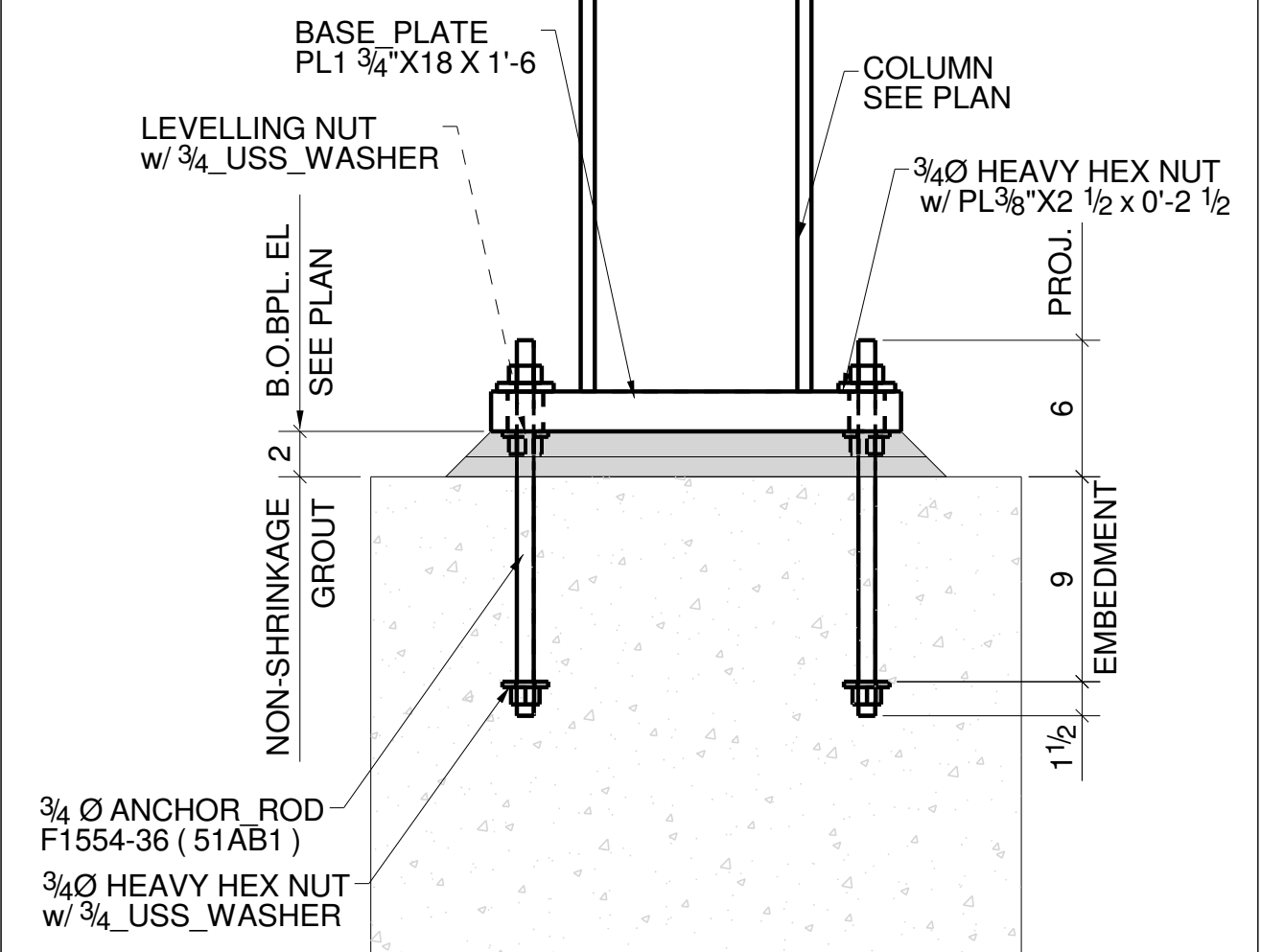
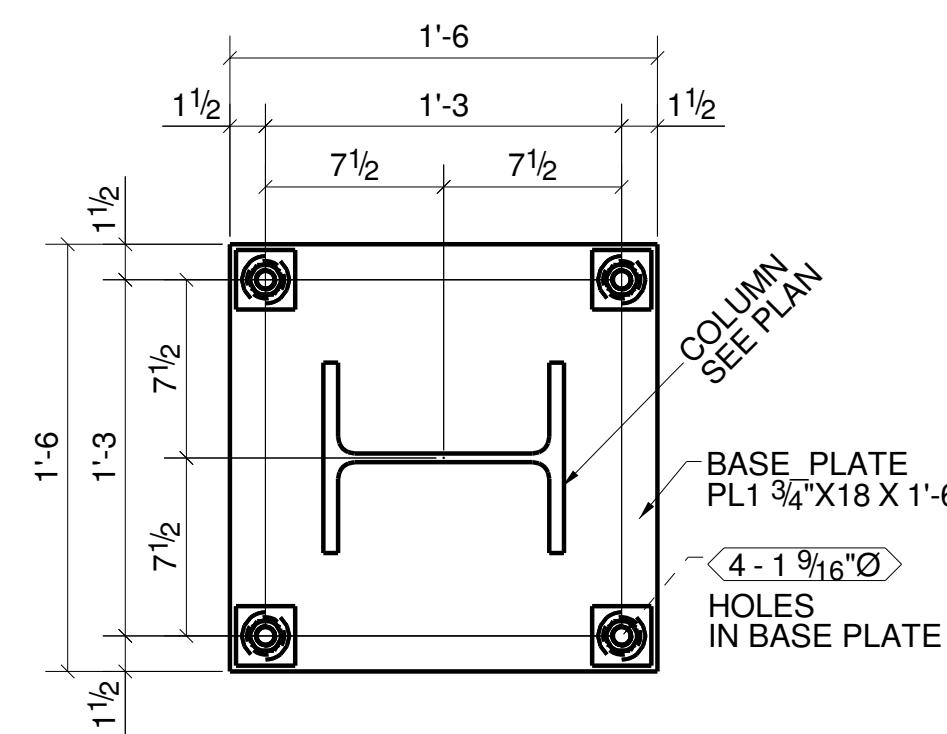
REVISIONS	

JOB	
G.C.	
ARCH.	
ISSUED TO	
SHOP DATE	

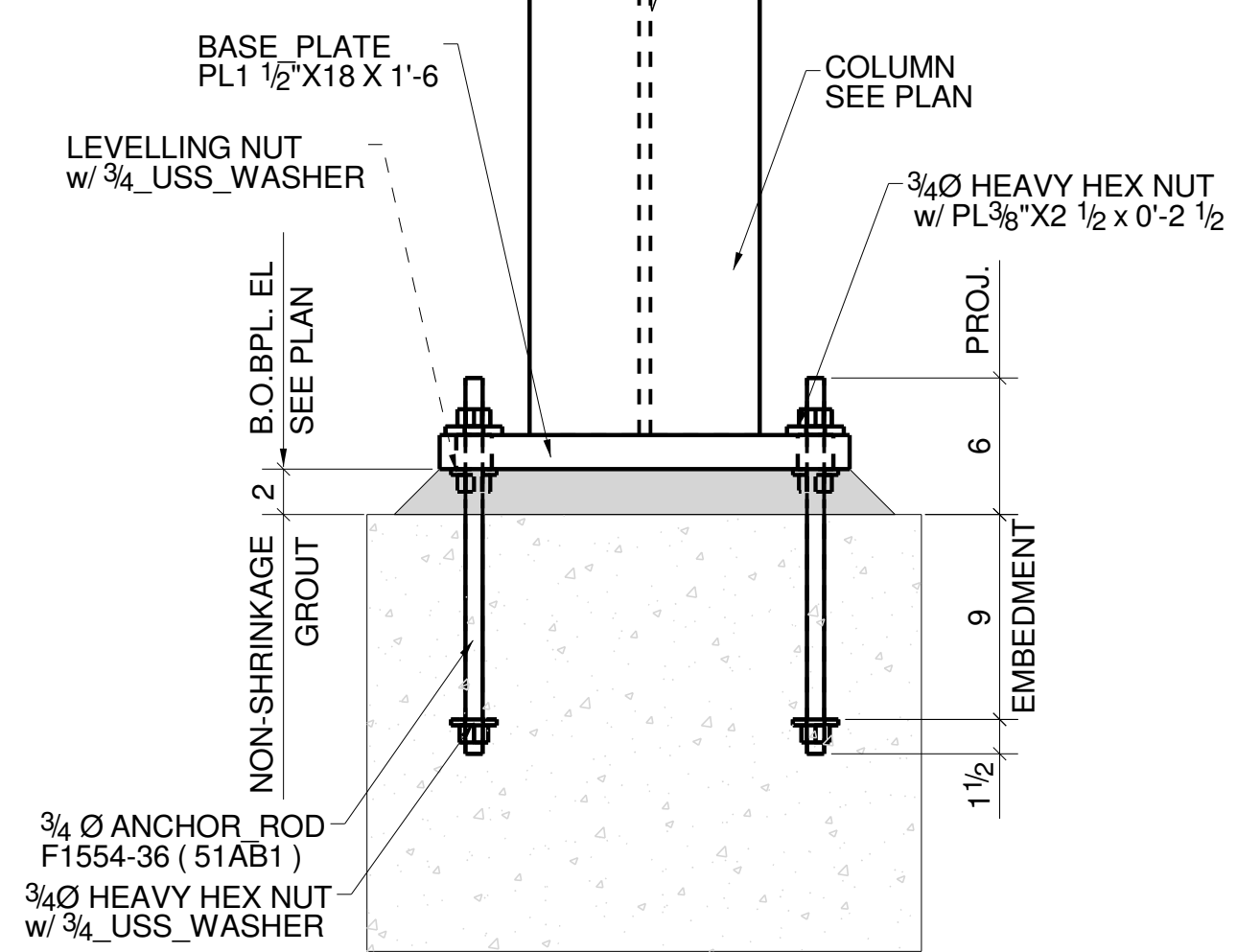
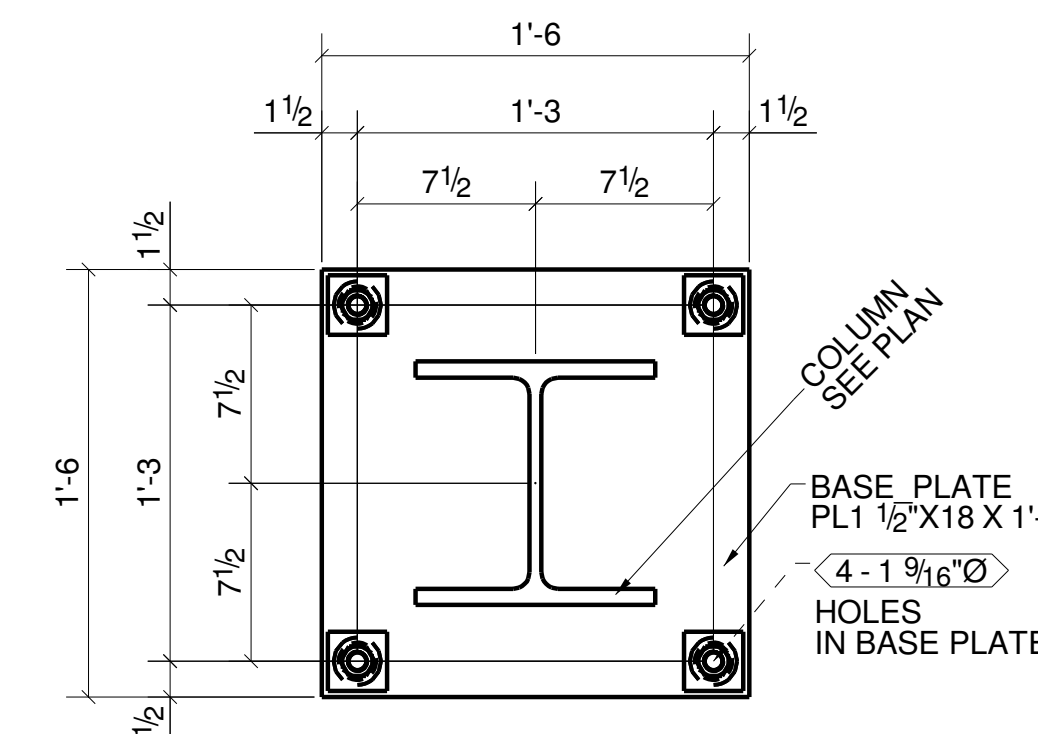
CHKD.		DATE	
CONTRACT NO.		DWG. NO.	AF42



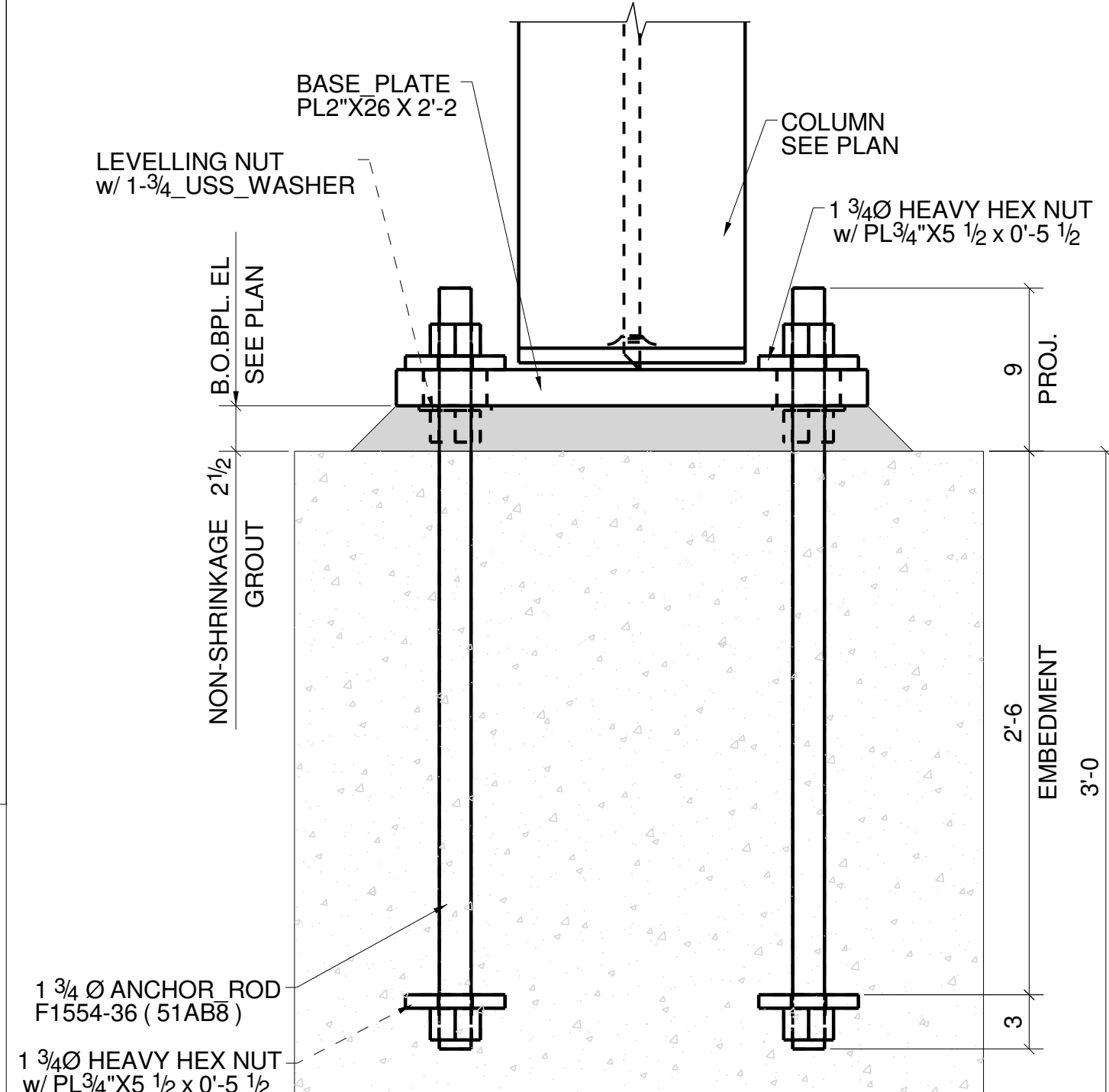
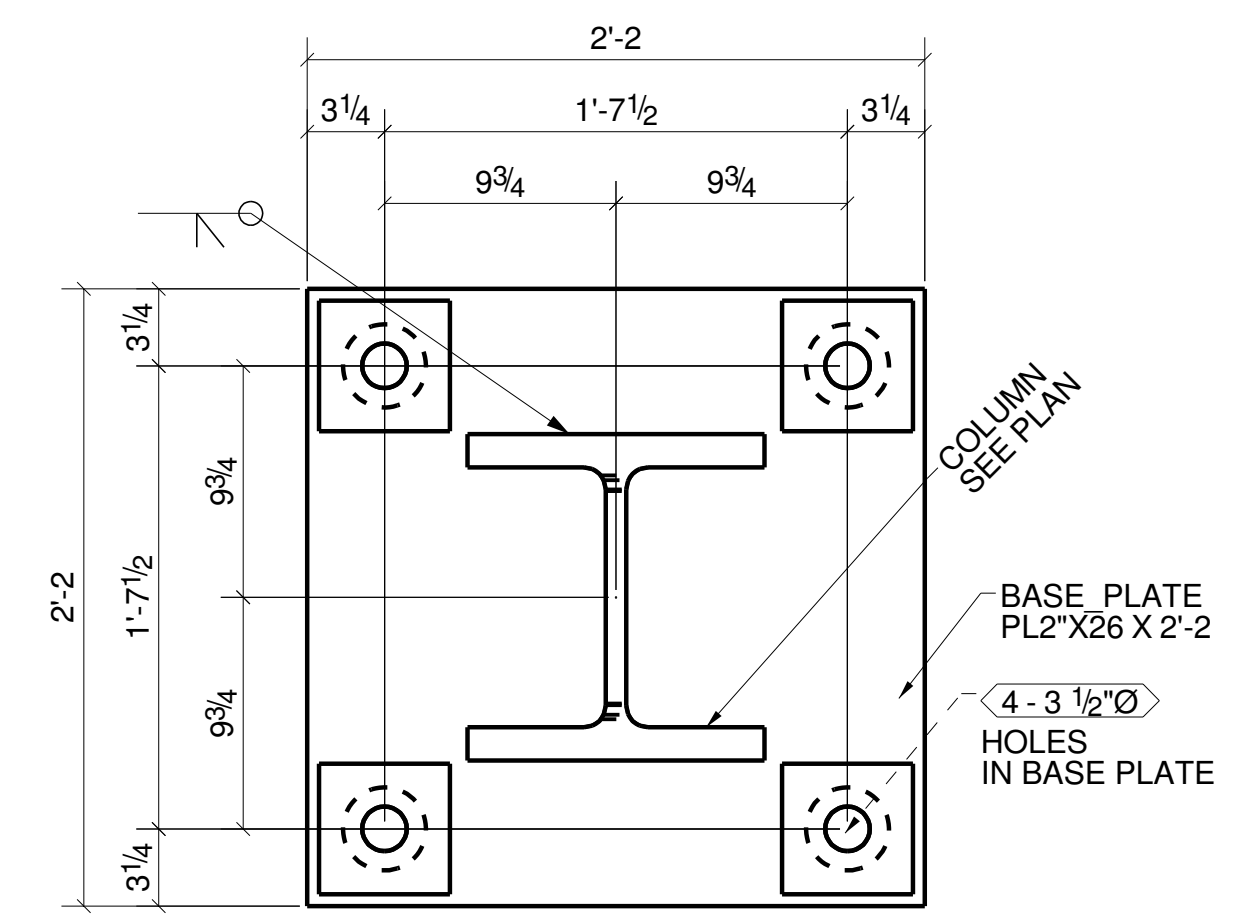
DETAIL - 1
(22 LOCATIONS)



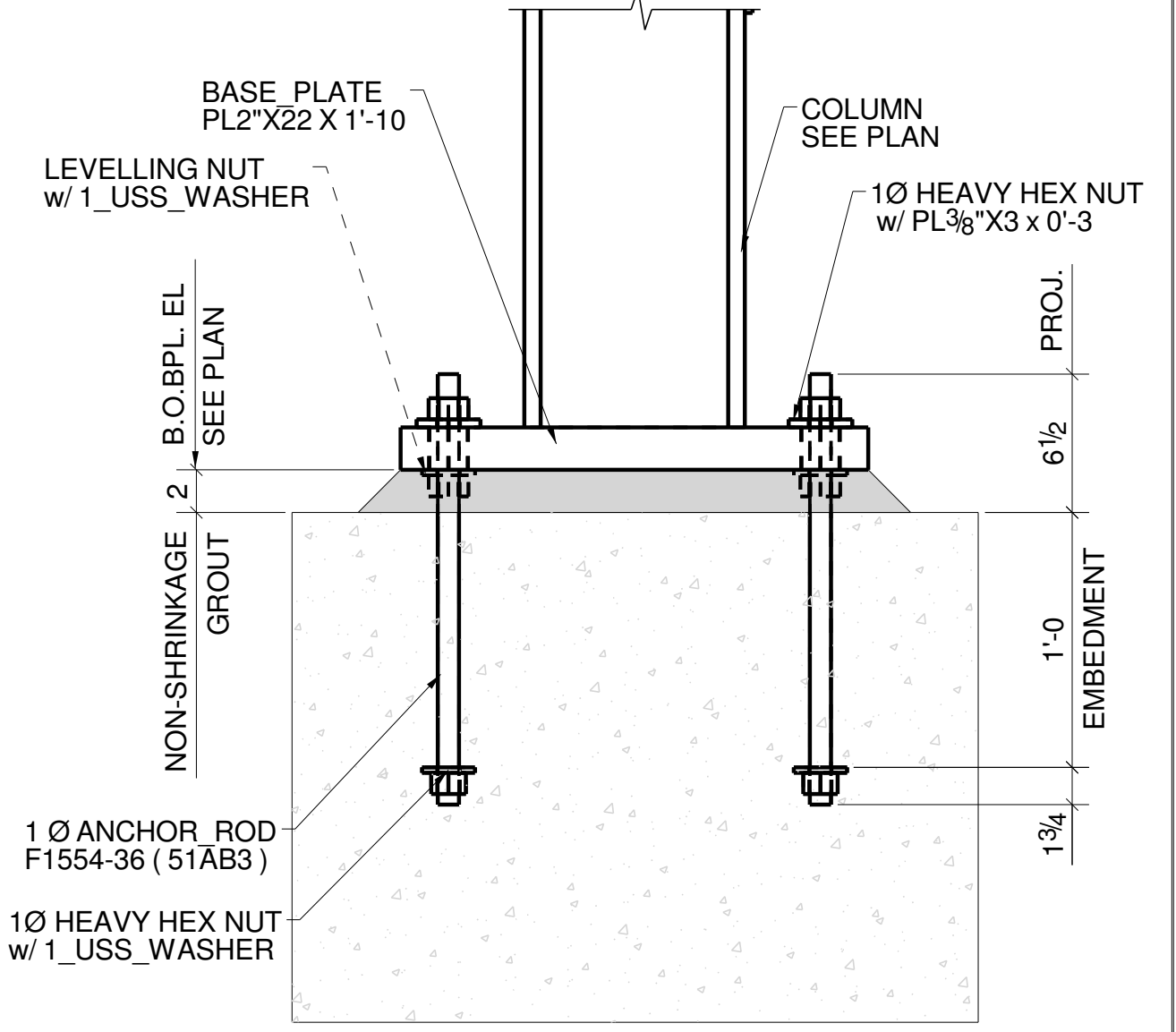
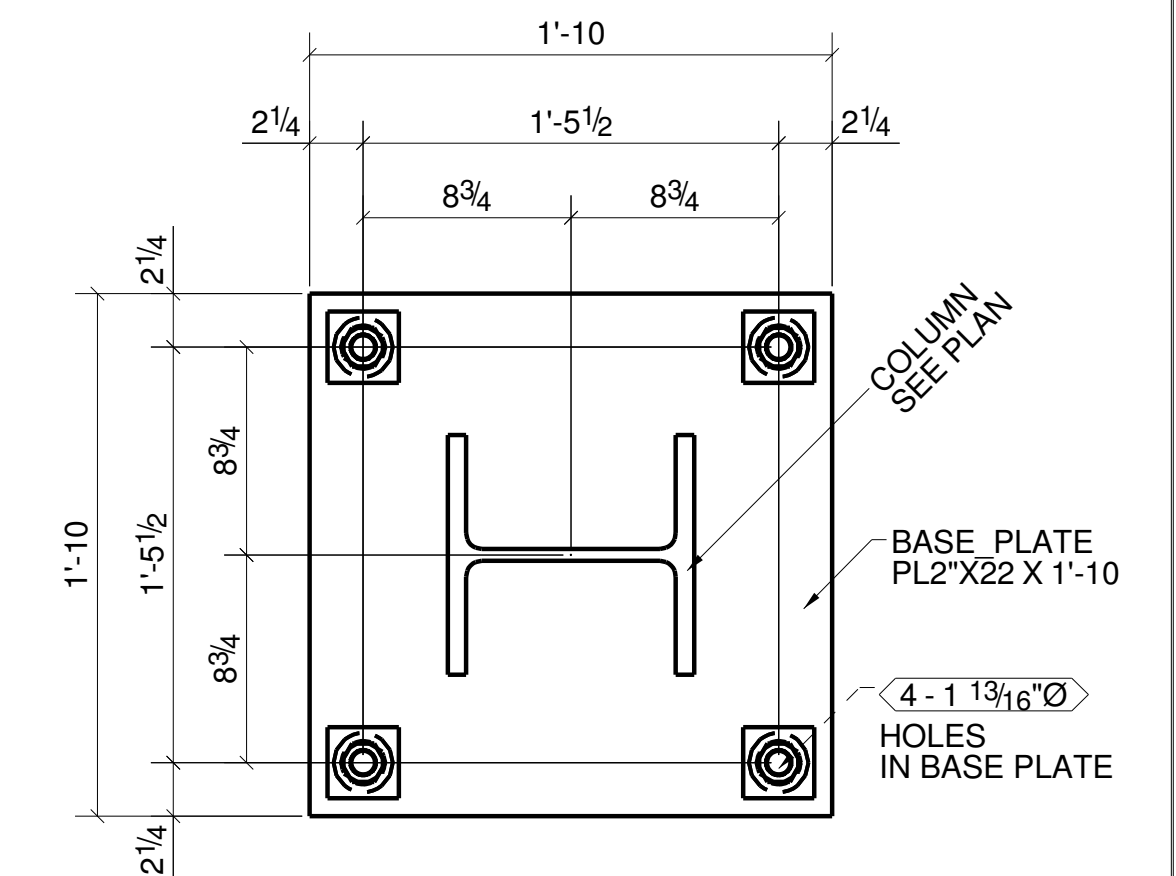
DETAIL - 2
(16 LOCATIONS)



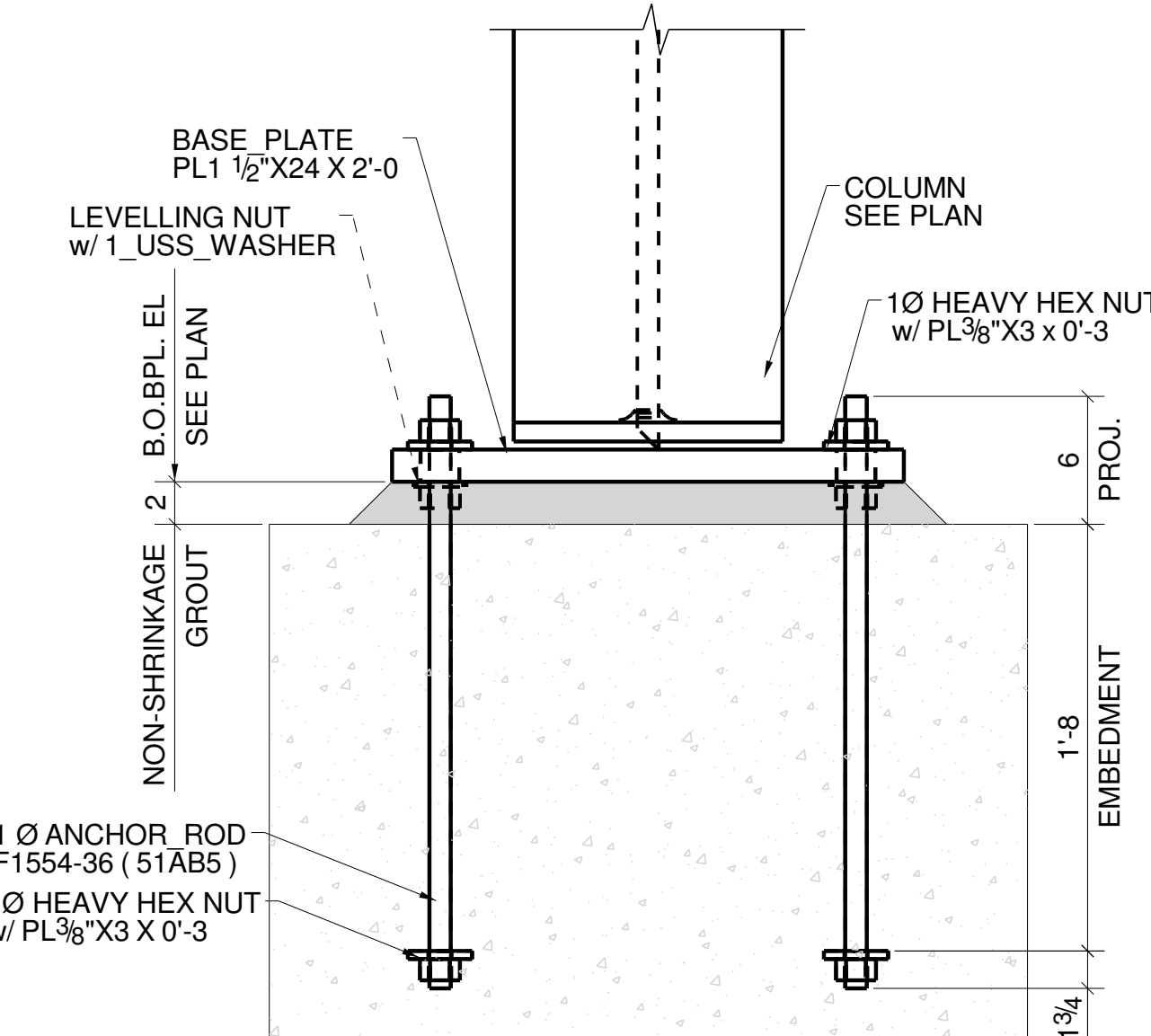
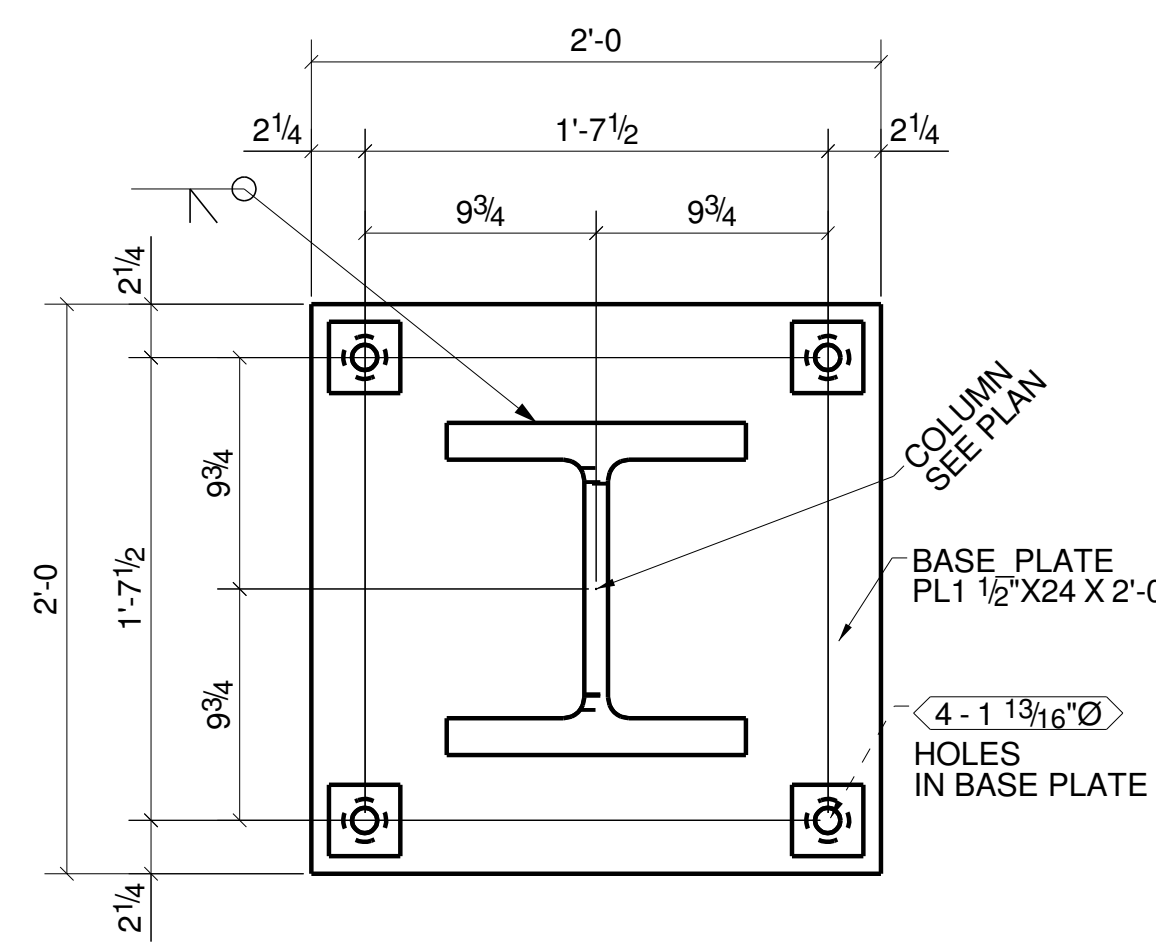
DETAIL - 3
(5 LOCATIONS)



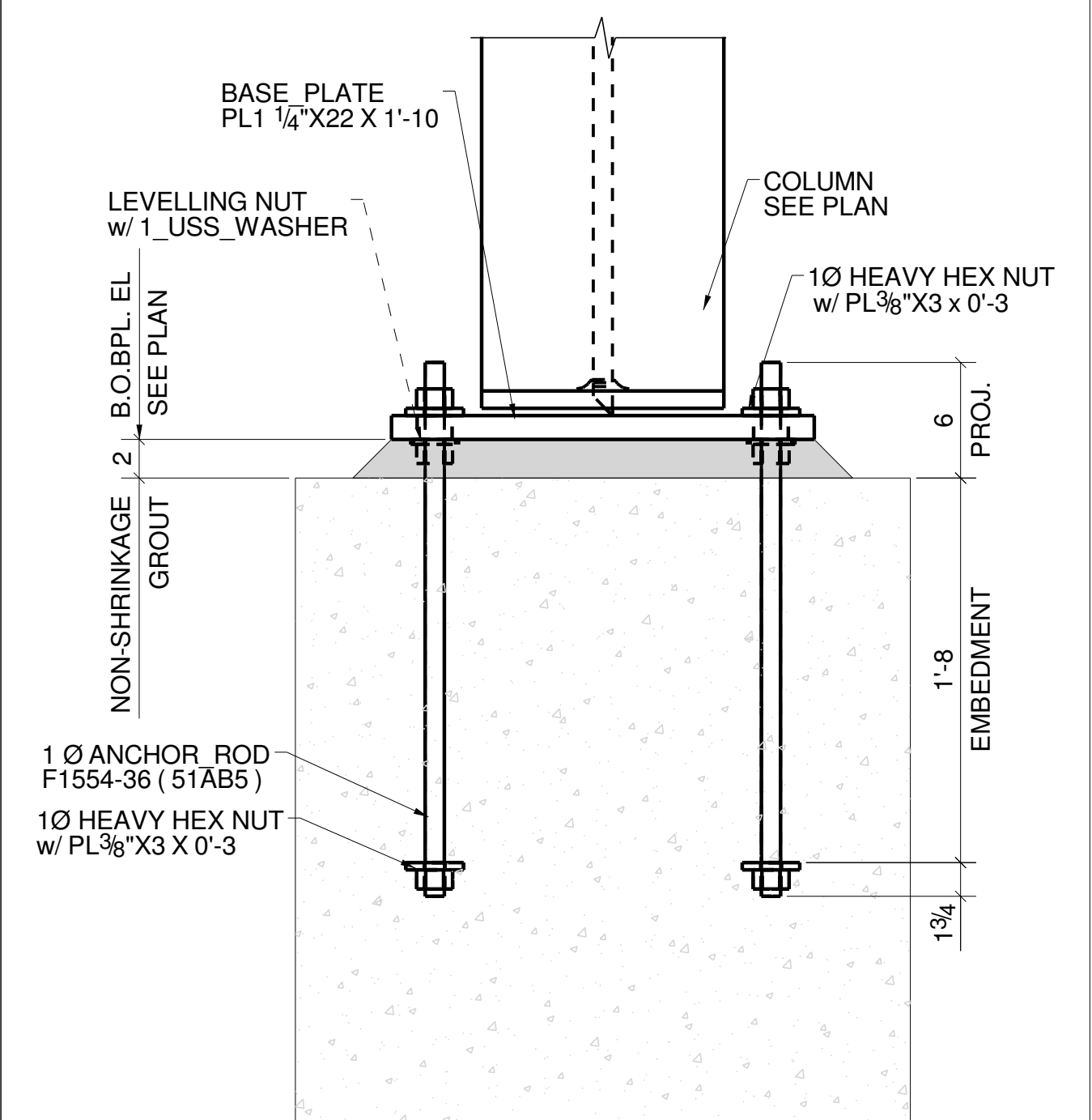
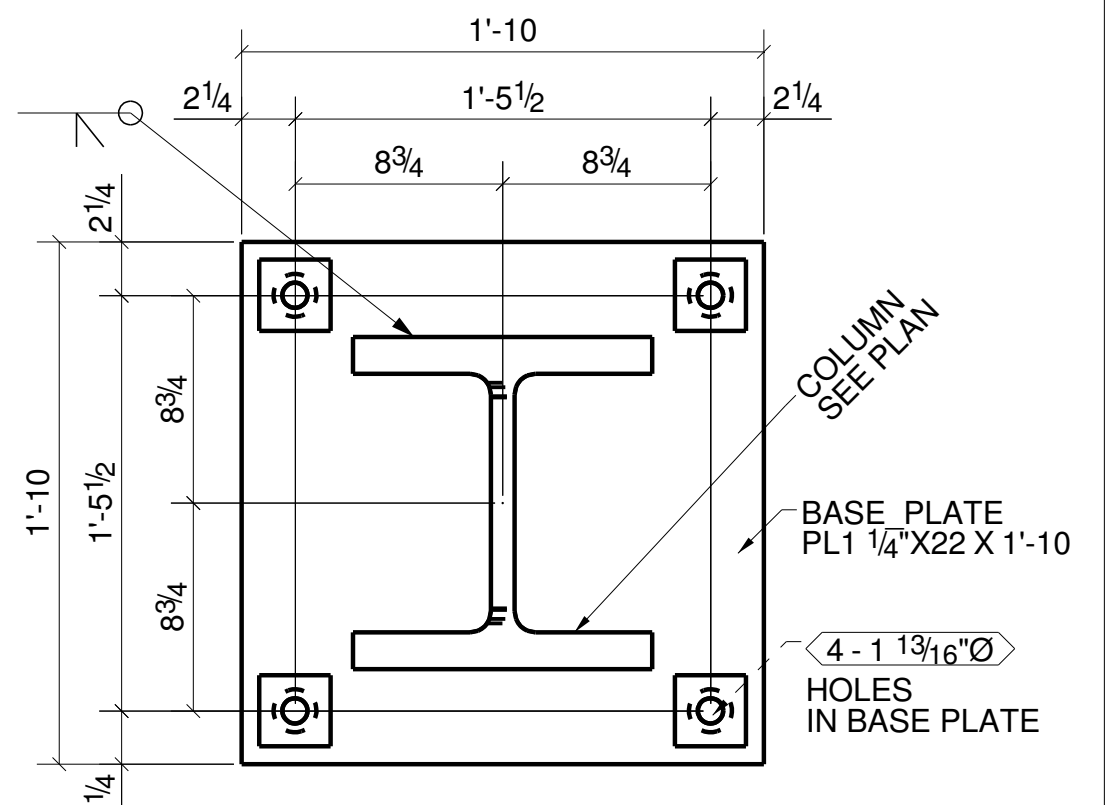
DETAIL - 4
(2 LOCATIONS)



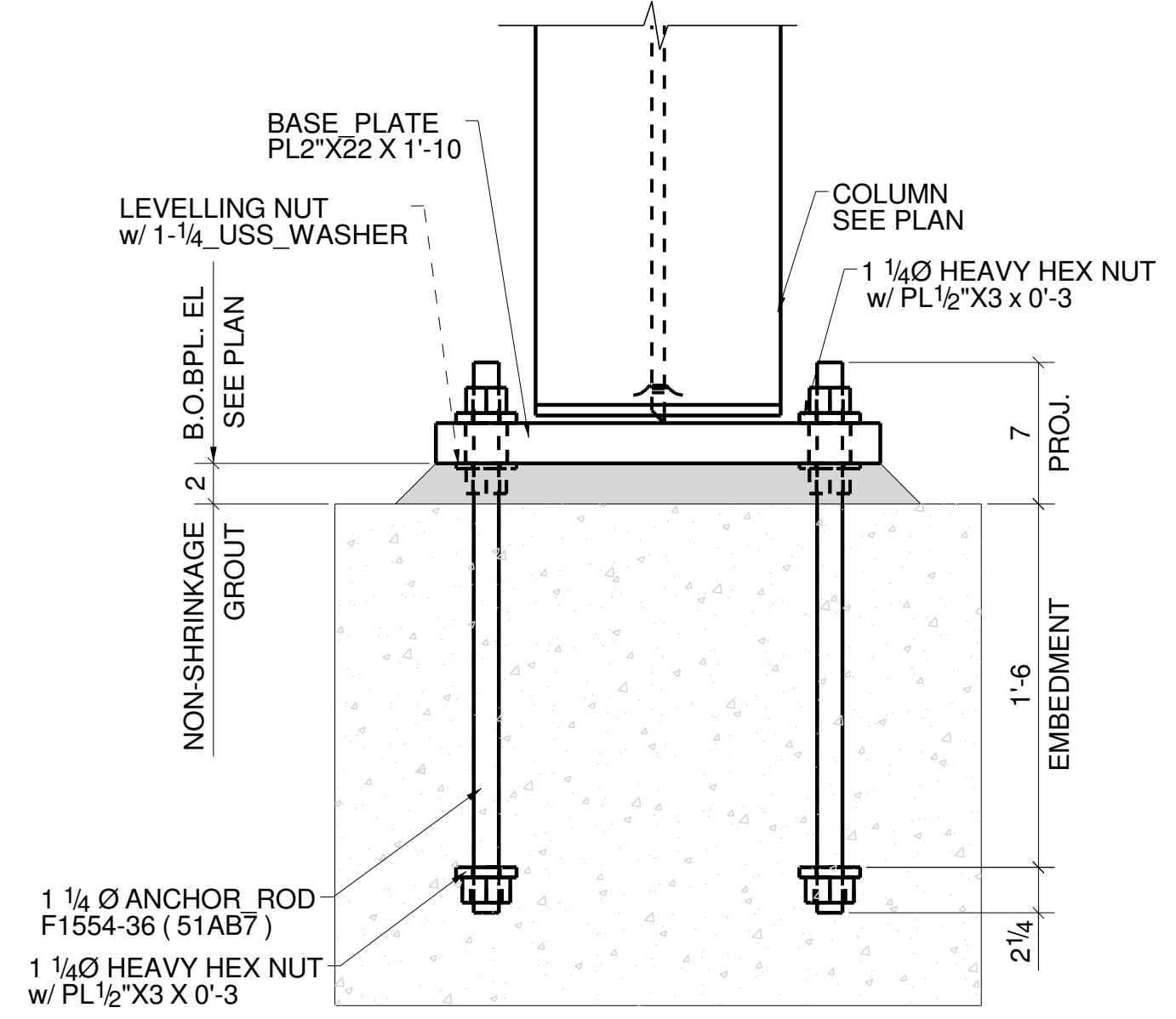
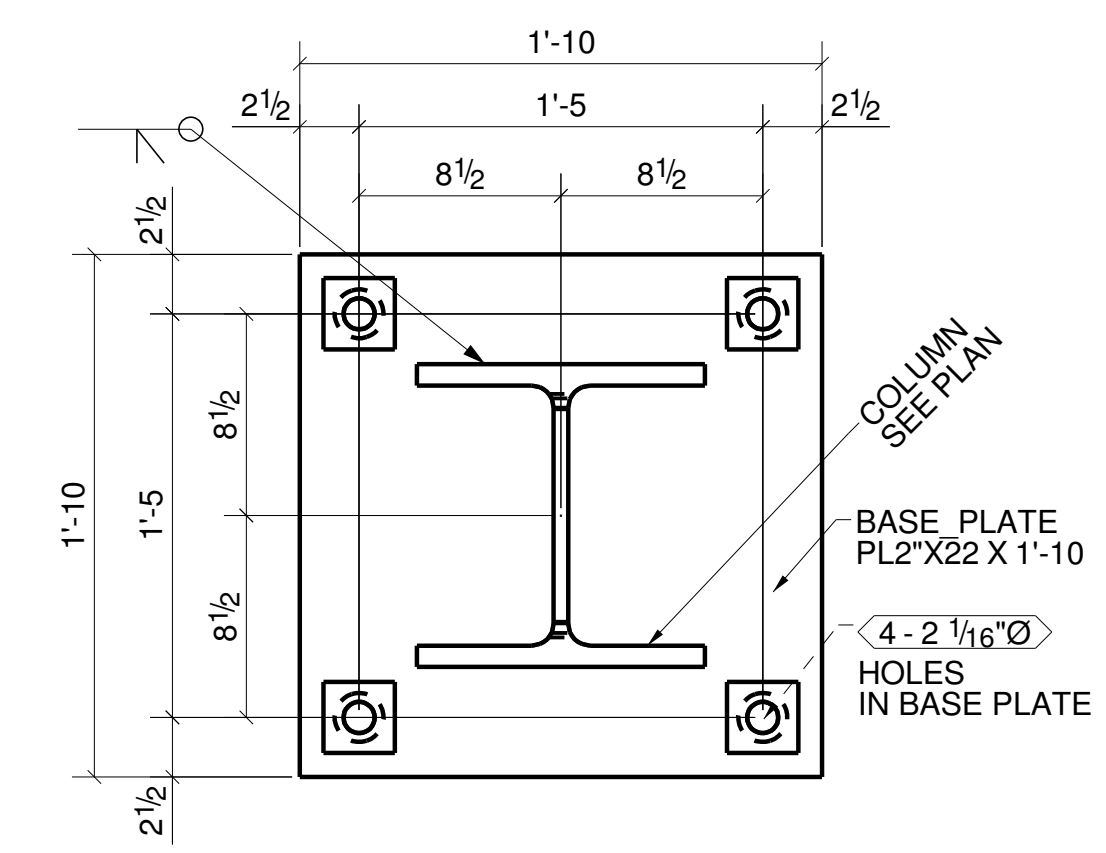
DETAIL - 5
(2 LOCATIONS)



DETAIL - 6
(5 LOCATIONS)



DETAIL - 7
(3 LOCATIONS)



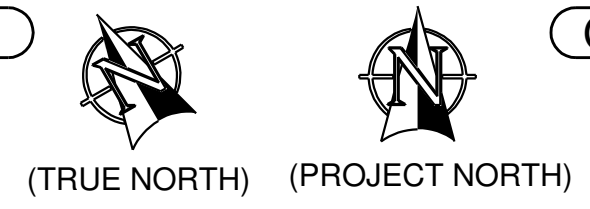
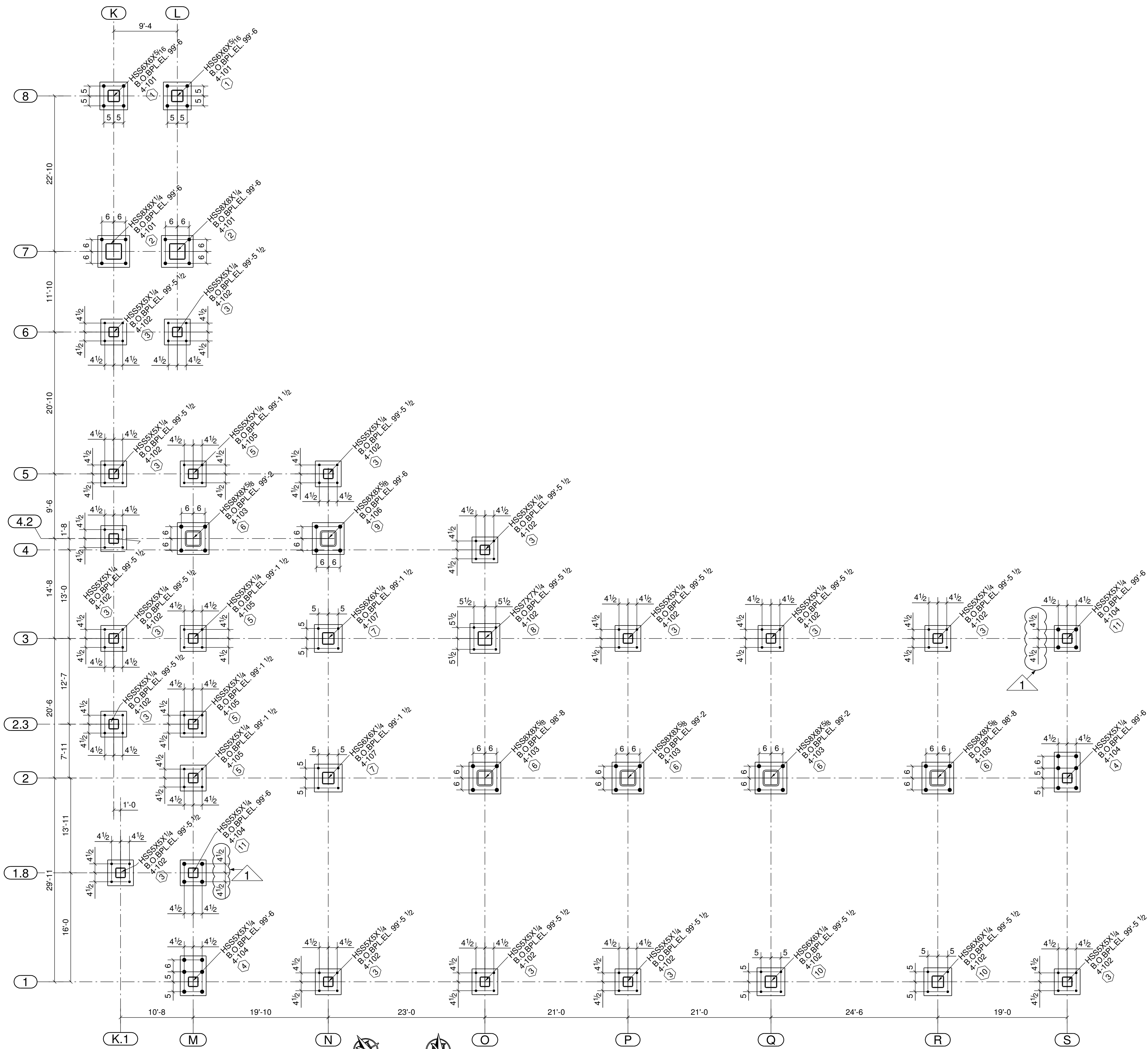
DETAIL - 8
(2 LOCATIONS)

APPROVAL REVIEW AUTHORITY:
PLEASE REVIEW THIS DRAWING CAREFULLY
IT REPRESENTS OUR INTERPRETATION OF THE INTENT OF
THE CONTRACT DOCUMENTS. HOWEVER, THE STEEL
FABRICATOR AND THE STRUCTURAL STEEL DETAILER
ASSUME NO RESPONSIBILITY FOR THE ACCURACY OF THE
INFORMATION SHOWN ON THIS DRAWING. THIS IS THE
RESPONSIBILITY OF THE BUYER.
IT WILL BE ASSUMED THAT ALL INFORMATION SHOWN
HEREIN HAS THE AFFIRMATION OF THE APPROVAL
AUTHORITY UNLESS NOTED TO THE CONTRARY ON THIS
DRAWING WHEN IT IS RETURNED FROM APPROVAL.
SUBSEQUENT CHANGES TO INFORMATION SHOWN ON
THESE DRAWINGS AFTER FIRST SUBMISSION WILL BE
CONSIDERED AS CONTRACT CHANGES.
ADOPTED BY THE NATIONAL INSTITUTE OF STEEL DETAILING 1977.

PRINT RECORD			
NO.	DATE	TO	FOR
1			
2			
3			
4			

REVISIONS				JOB	
				G.C.	
				ARCH.	
				DRAWN	CHKD.
				ISSUED	DATE
				SHOP DATE	CONTRACT NO.
					DWG. NO.
					AF52

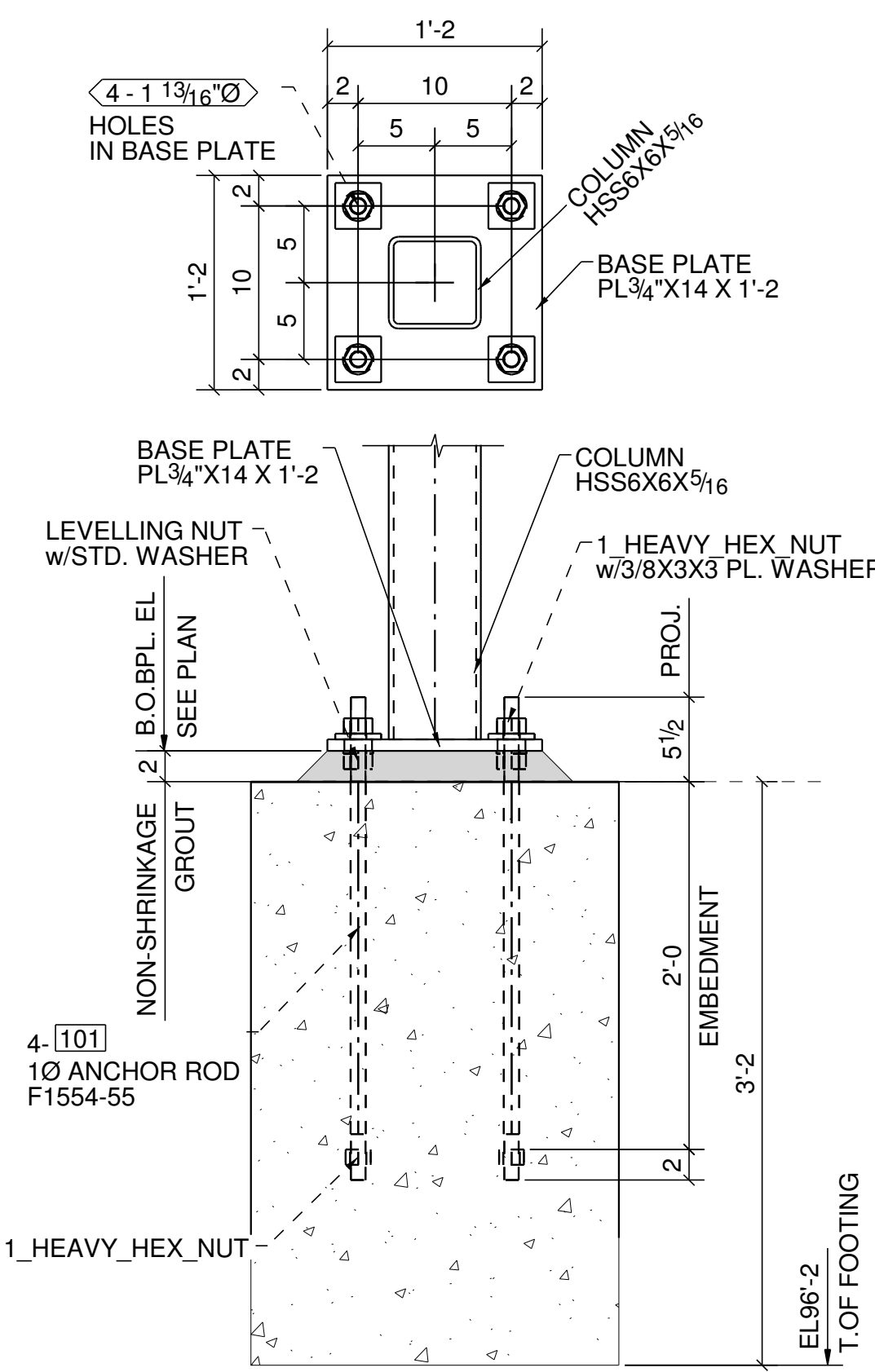
DRAWINGS PREPARED BY:	
DRAWING FINAL THIS DATE	



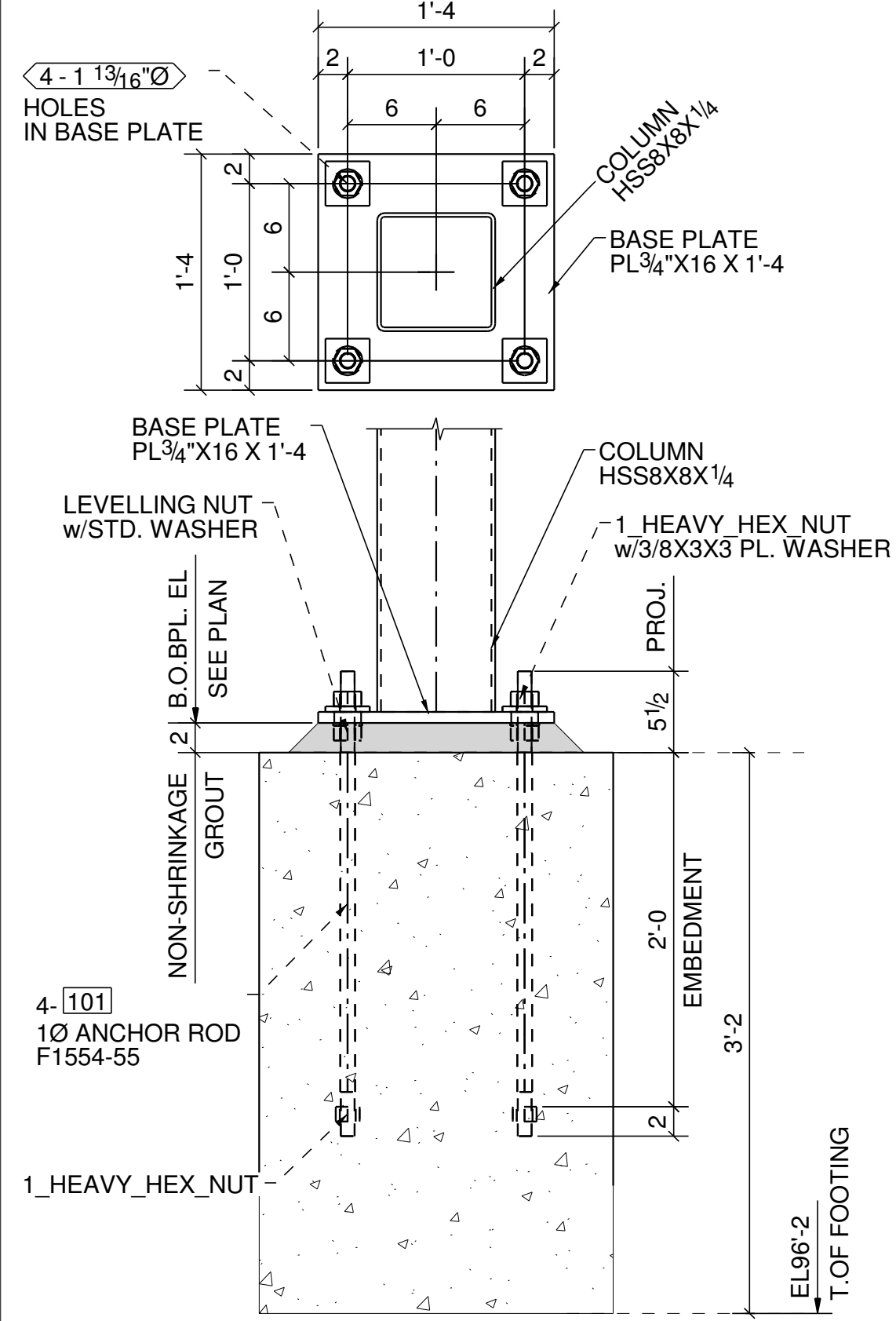
ANCHOR BOLT PLAN @ FOUNDATION LEVEL ZONE-1
(REF: 301.1)

LEGEND

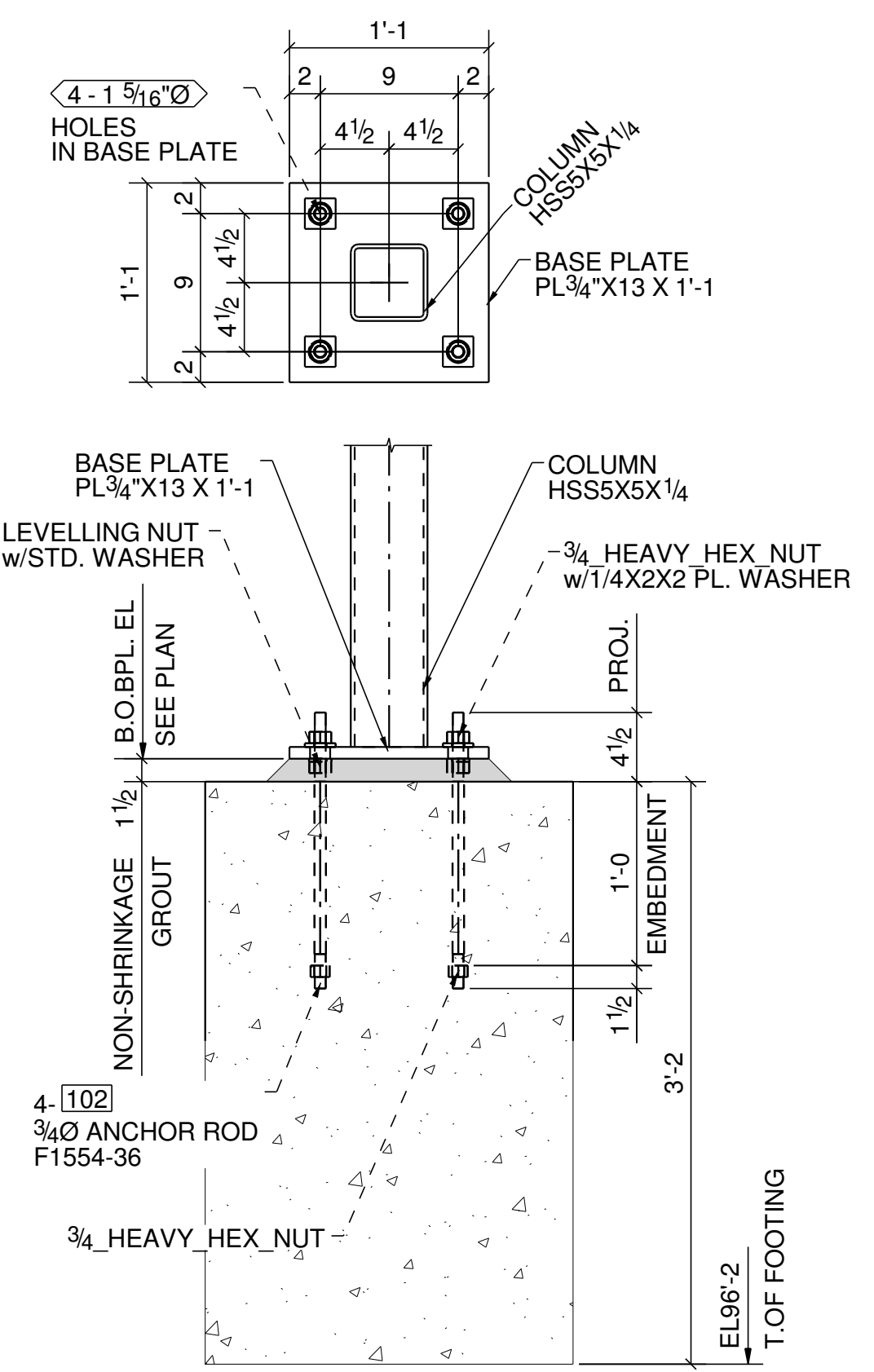
- COLUMN PROFILE
- ▲ BOTTOM OF BASE PL. ELEVATION
- XXXXX B.O.B.P.L.E.L.=(X'-XX")
- X-XXX ANCHOR ROD QTY-ASSEMBLY MARK
- TYPE OF DETAIL



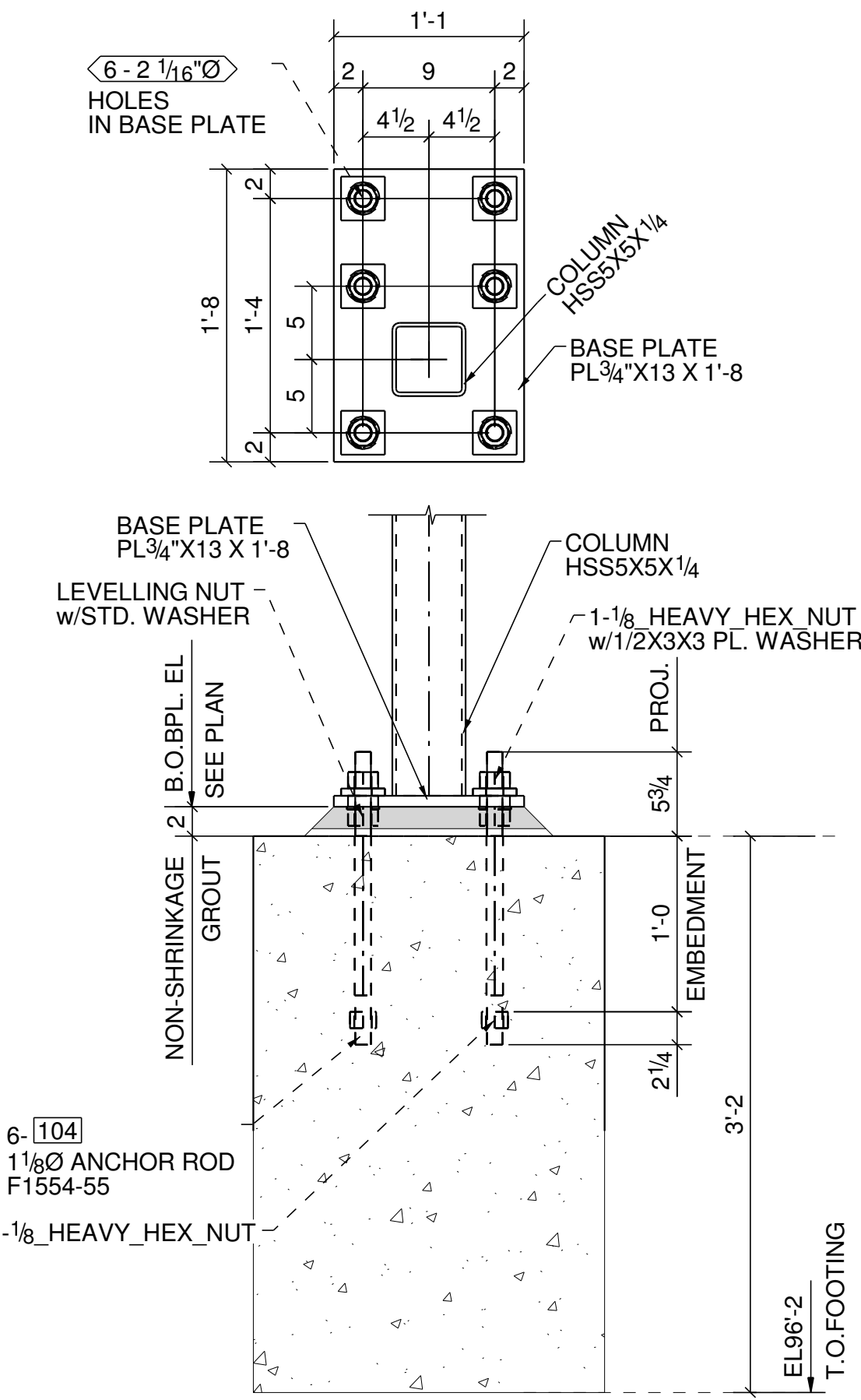
DETAIL 1
(02-LOCATIONS)
(ORIENTATION SEE PLAN)
(REF: 293)



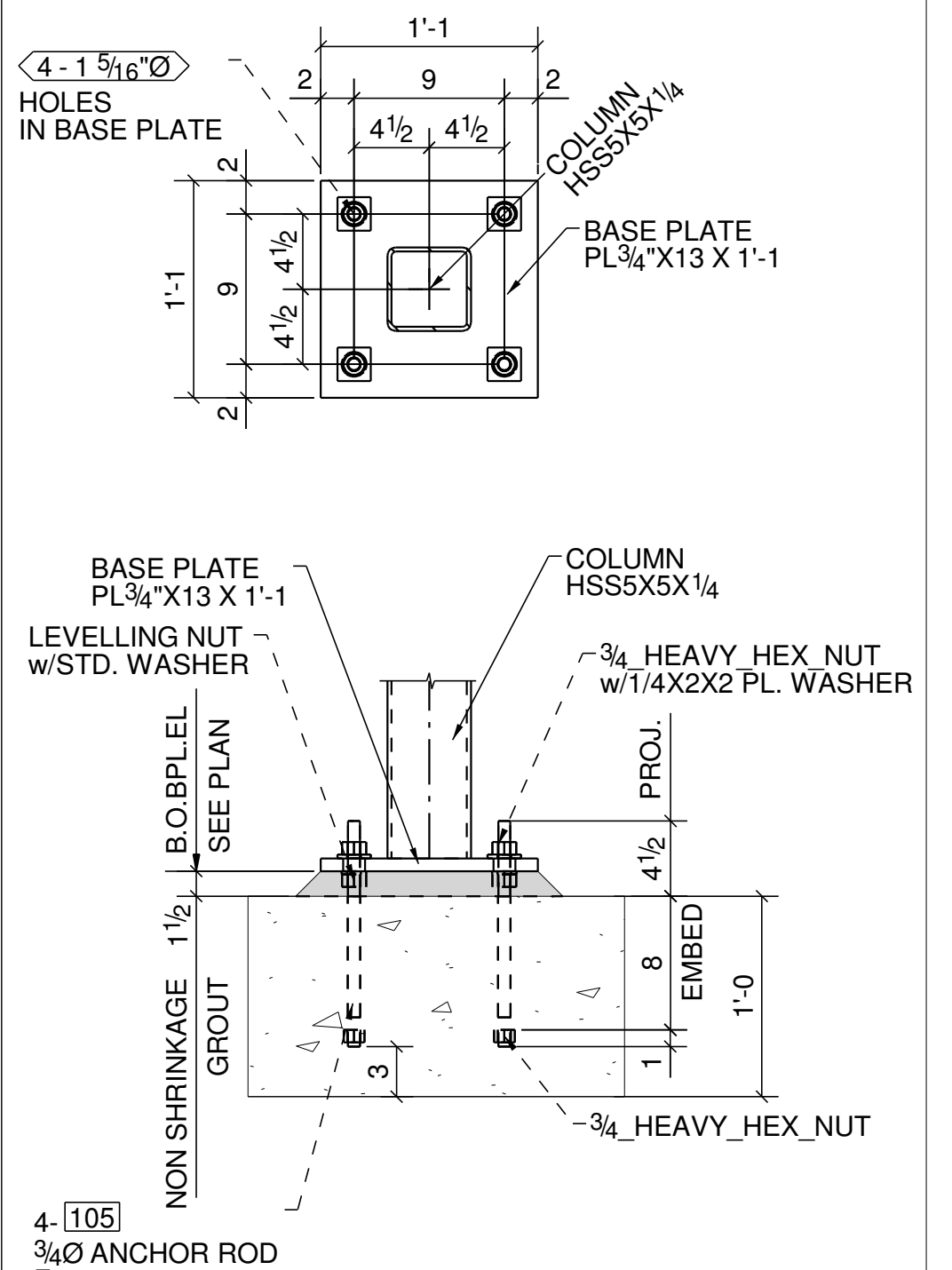
DETAIL 2
(02-LOCATIONS)
(ORIENTATION SEE PLAN)
(REF: 293)



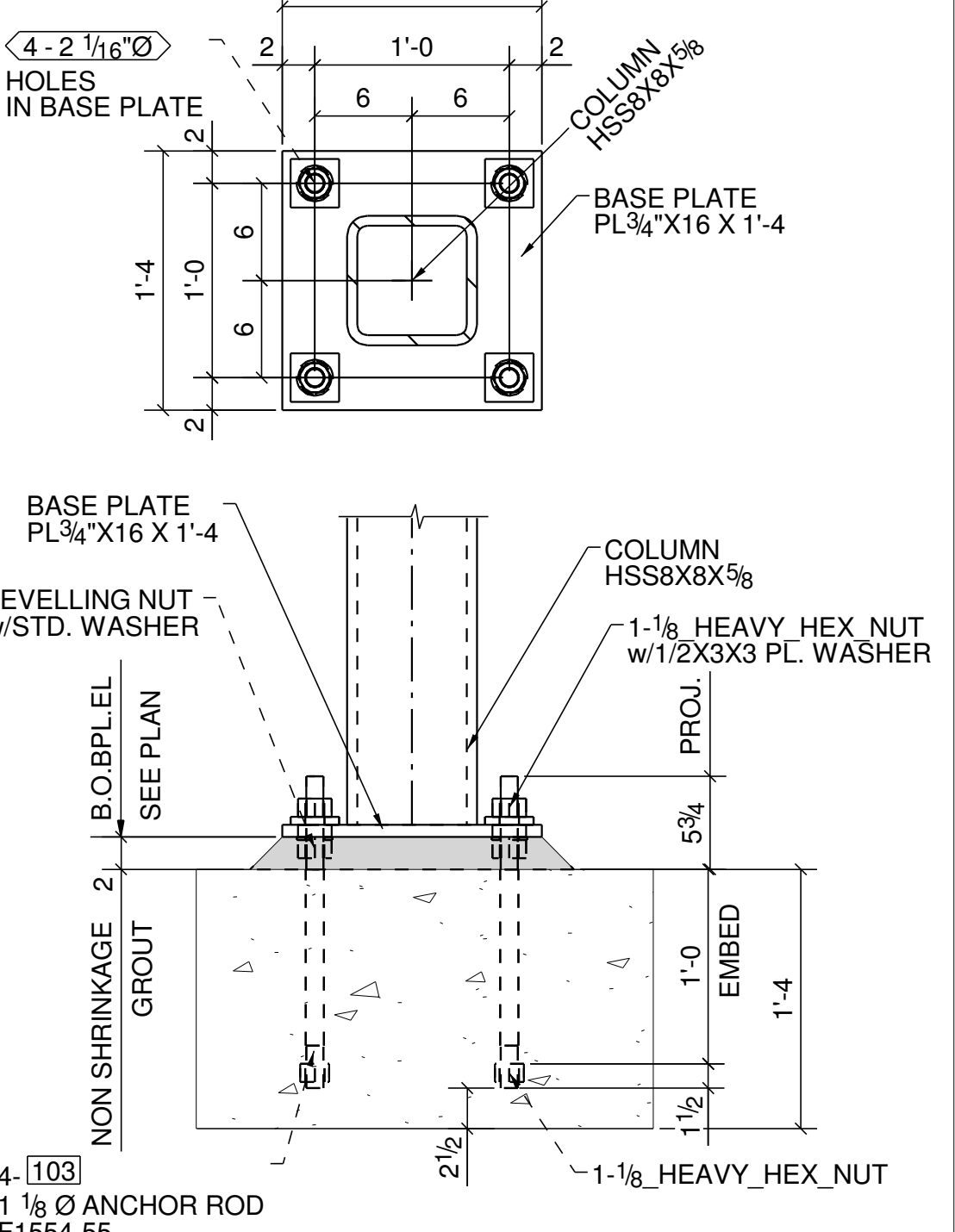
DETAIL 3
(16-LOCATIONS)
(ORIENTATION SEE PLAN)
(REF: 293)



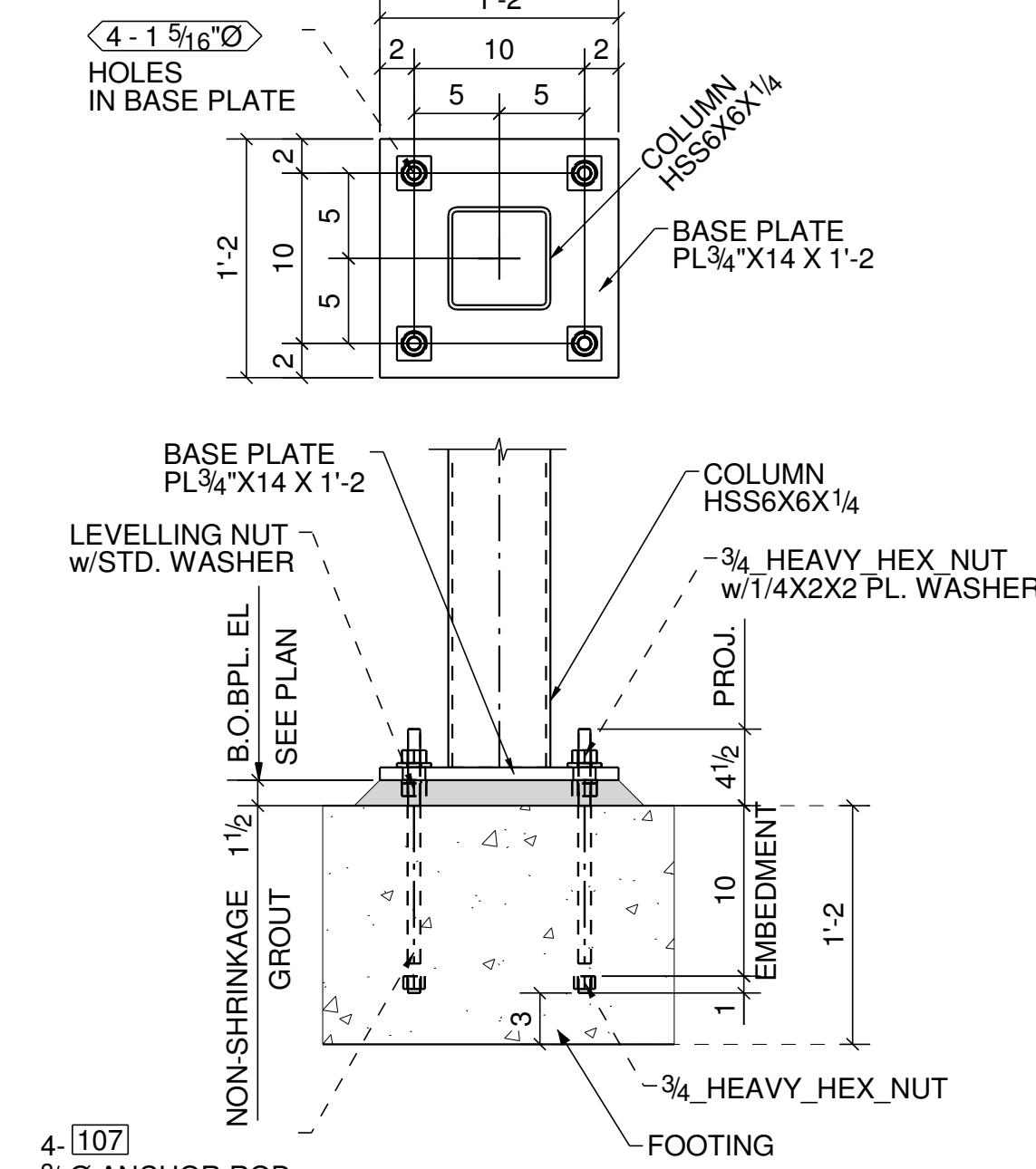
DETAIL 4
(02-LOCATIONS)
(ORIENTATION SEE PLAN)
(REF: 293)



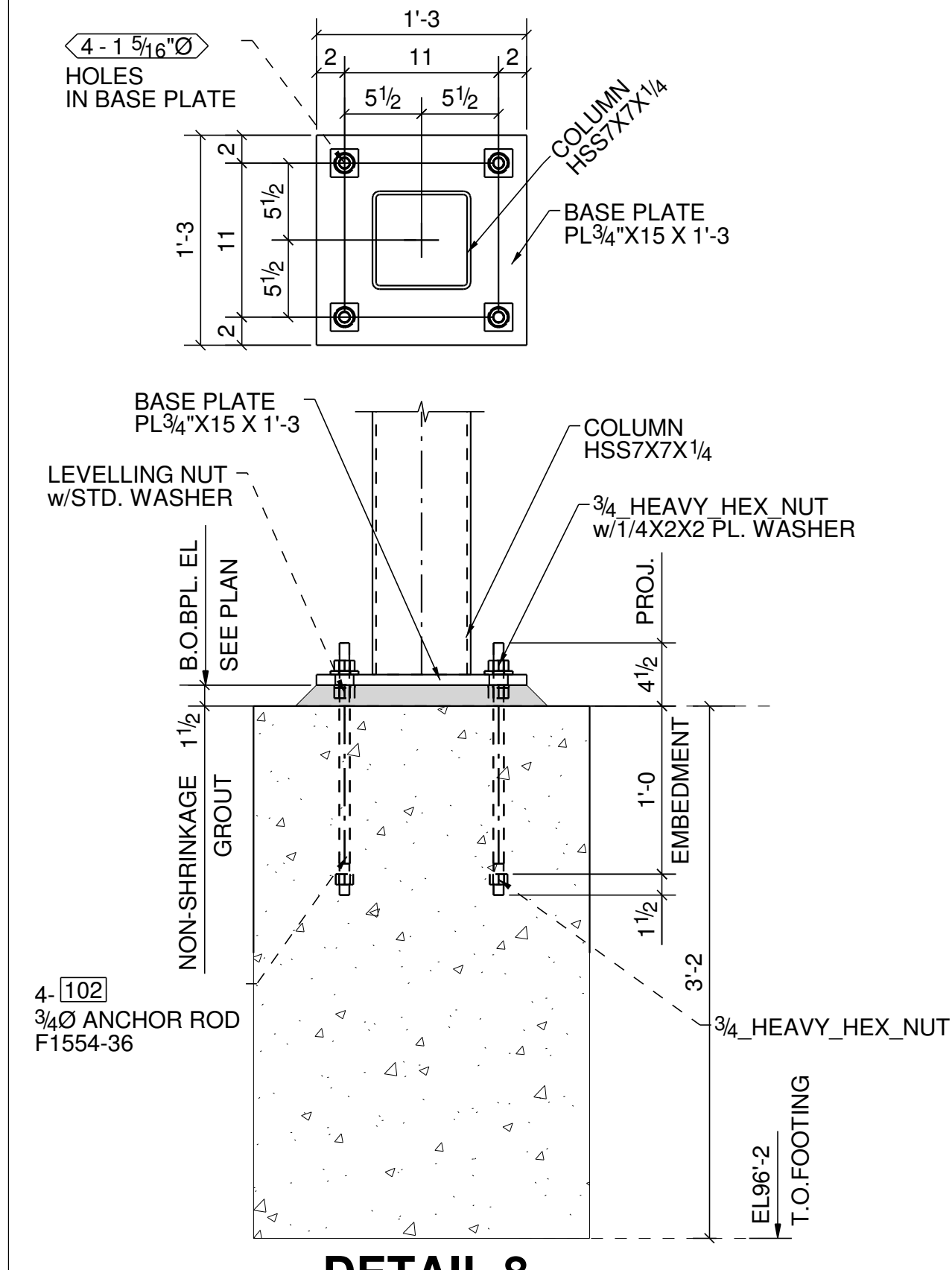
DETAIL 5
(04-LOCATIONS)
(ORIENTATION SEE PLAN)
(REF: 293)



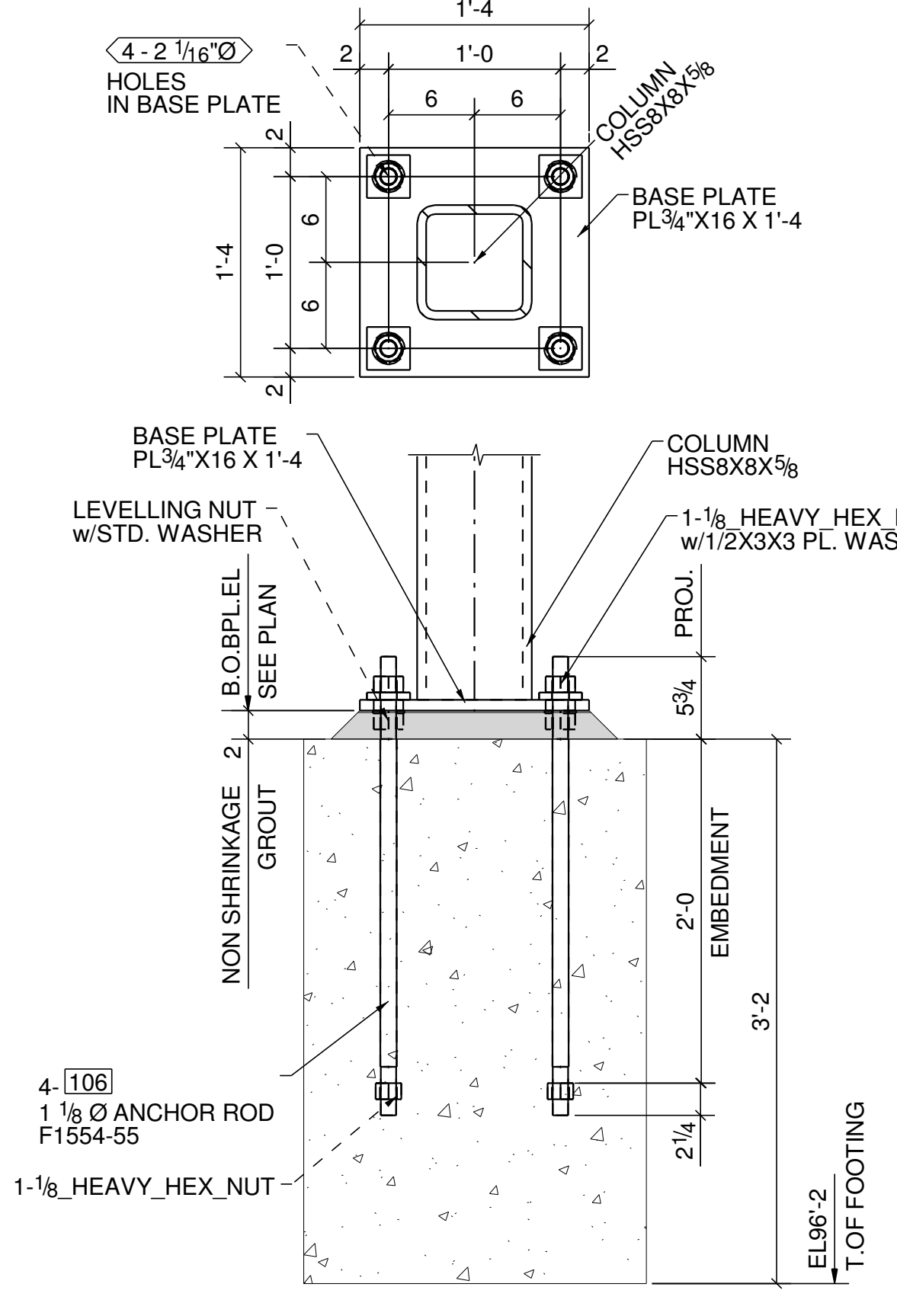
DETAIL 6
(05-LOCATIONS)
(ORIENTATION SEE PLAN)
(REF: 293)



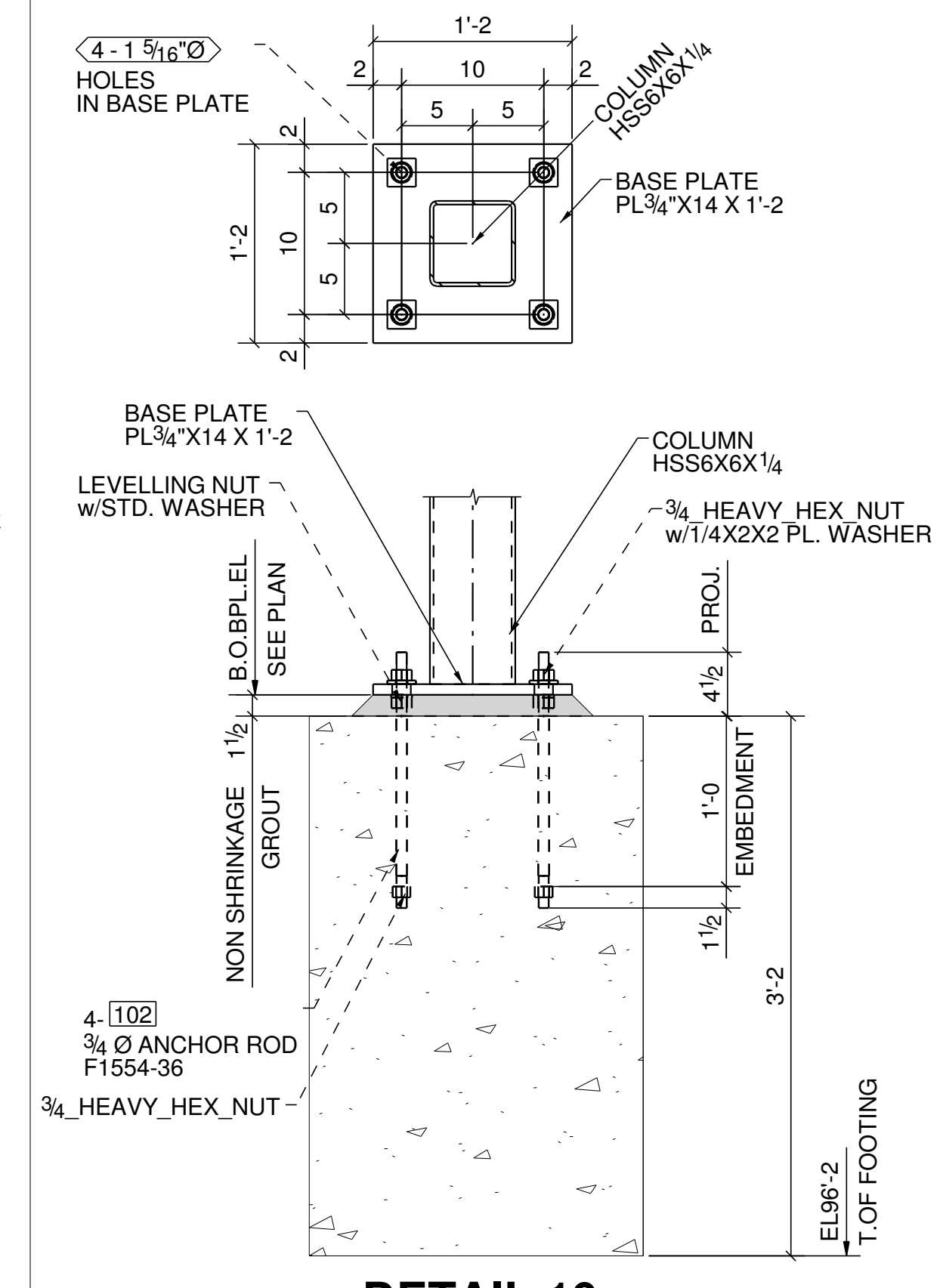
DETAIL 7
(02-LOCATIONS)
(ORIENTATION SEE PLAN)
(REF: 293)



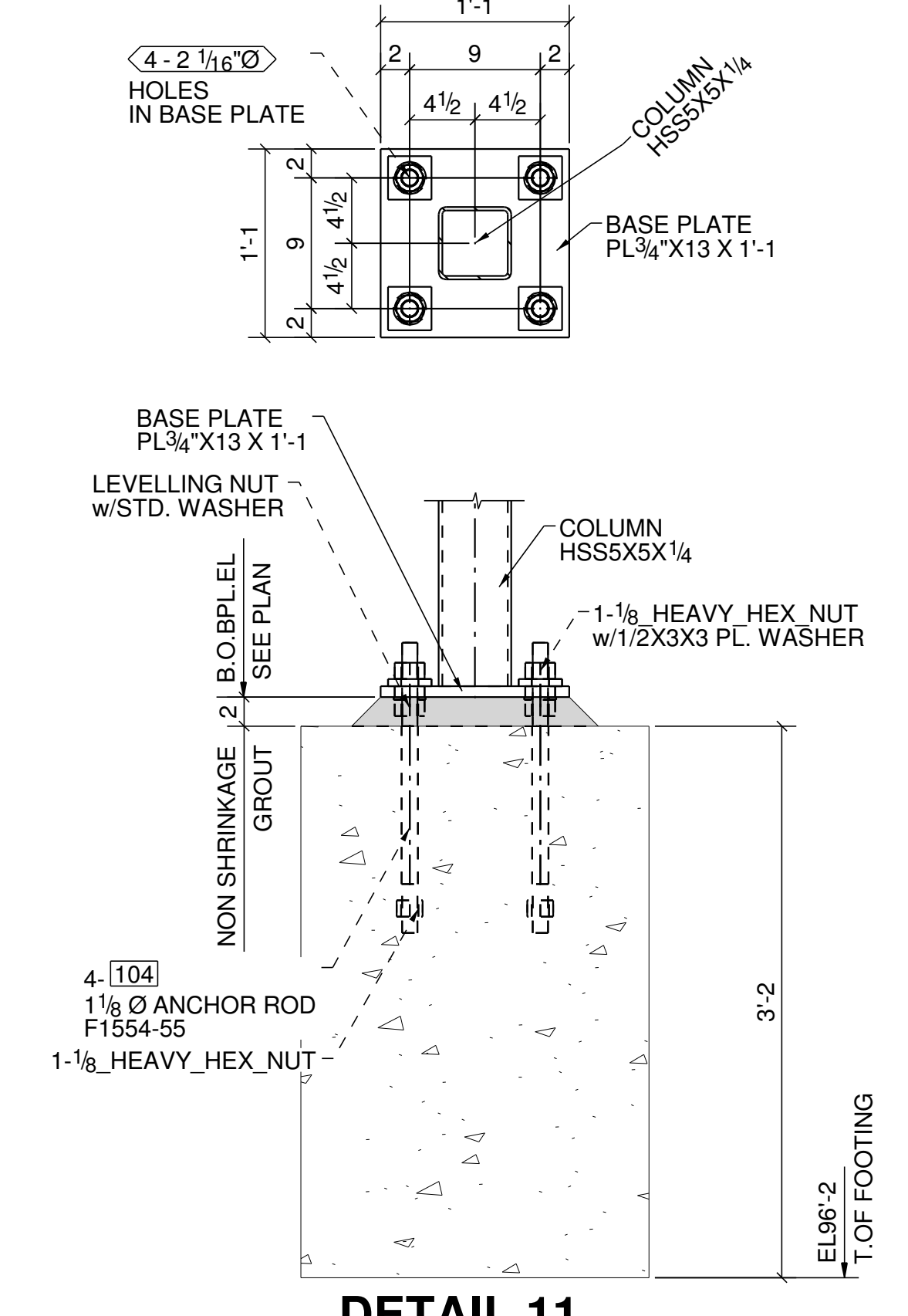
DETAIL 8
(01-LOCATIONS)
(ORIENTATION SEE PLAN)
(REF: 293)



DETAIL 9
(01-LOCATIONS)
(ORIENTATION SEE PLAN)
(REF: 293)



DETAIL 10
(02-LOCATIONS)
(ORIENTATION SEE PLAN)
(REF: 293)



DETAIL 11
(02-LOCATIONS)
(ORIENTATION SEE PLAN)
(REF: 293)